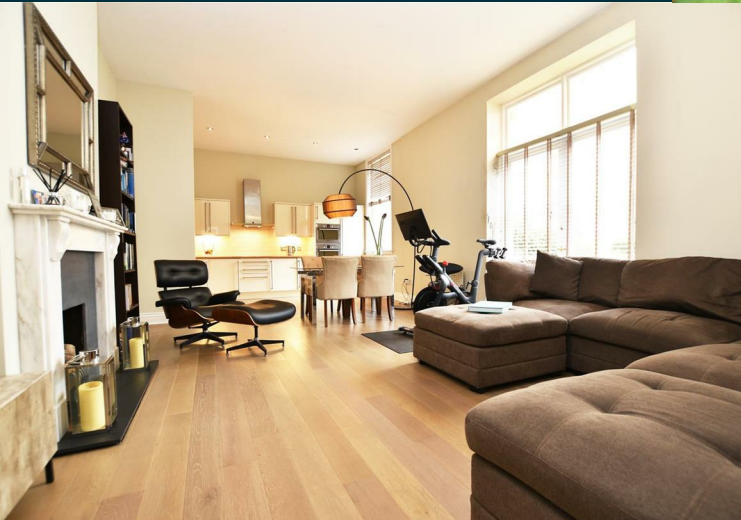


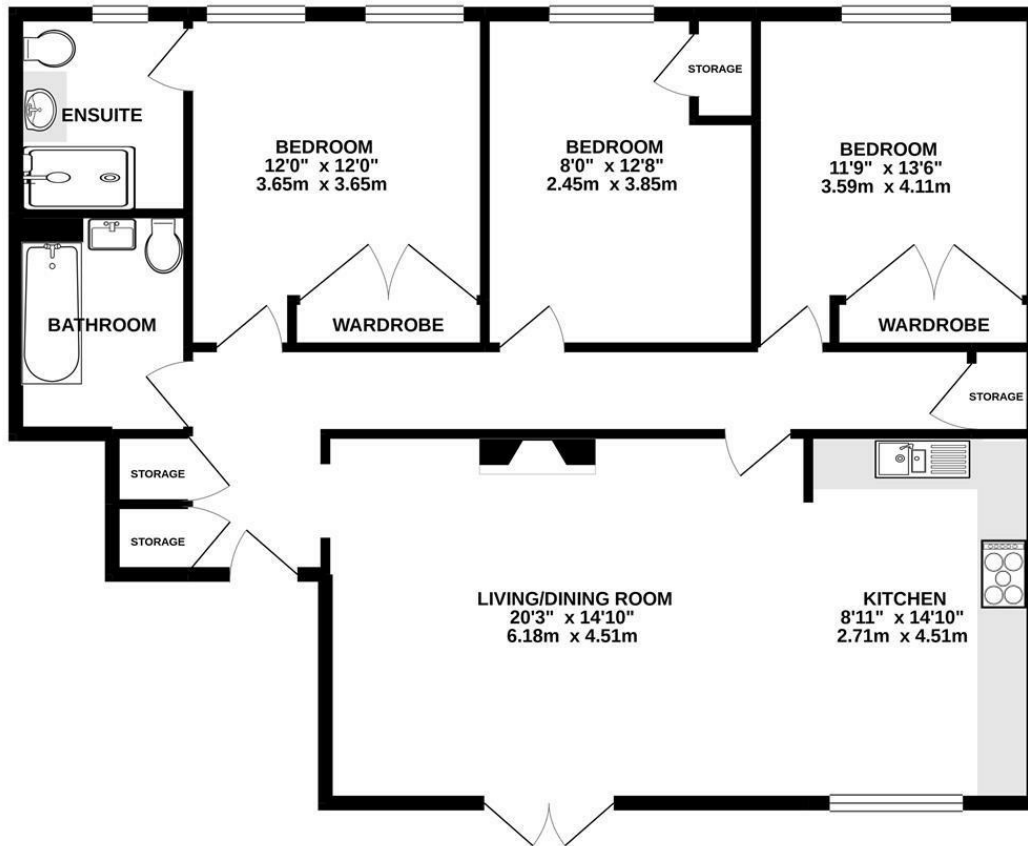
**Twickenham Road
Old Isleworth
TW7 7DL**

£650,000

ChaseBuchanan

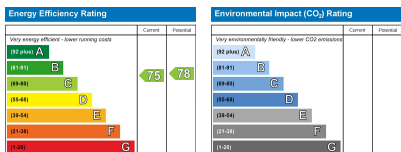


GROUND FLOOR
1151 sq.ft. (106.9 sq.m.) approx.



TOTAL FLOOR AREA: 1151 sq ft. (106.9 sq.m.) approx.

Whilst every attempt has been made to ensure the accuracy of the floorplan contained here, measurements of doors, windows, rooms and any other items are approximate and no responsibility is taken for any error, omission or mis-statement. This plan is for illustrative purposes only and should be used as such by any prospective purchaser. The services, systems and appliances shown have not been tested and no guarantee as to their operability or efficiency can be given.
Made with Metropix ©2020



Care has been taken in the preparation of these particulars, however, their accuracy is not guaranteed and they do not form part of any contract. Measurements stated must be considered maximum.

- Viewings accompanied by Chase Buchanan
- Private gated development
- Private courtyard area
- Walking distance to the River Thames
- Stunning three bedroom apartment
- Two bathrooms
- Long lease
- St Margarets and Richmond close by

Spanning at just over 1150 sq.ft is this stunning three bedroom apartment in the Victorian wing of this sought after gated development, in the heart of Old Isleworth.

Located on the ground floor the accommodation comprises a bright and spacious open plan living/dining room with doors onto a private courtyard area, modern kitchen, three double bedrooms, one of which is being used as a walk in wardrobe and the master bedroom with an en-suite shower room. Further benefits include a feature fireplace, high ceilings, a newly installed combi boiler, an allocated parking space and cycle storage.

Holme Court is situated behind Van Gogh House (former residence of Vincent Van Gogh) within close proximity of The River Thames, St Margarets, Twickenham, Richmond as well as being close to all the amenities of Old Isleworth Village. The highly rated Blue School, St Mary's School and Isleworth Town School are also very close by. An early viewing is highly recommended by the vendors' sole agents Chase Buchanan.

For more information or to book a viewing, please contact:

020 8758 1755

ChaseBuchanan

7 Odeon Parade, 480 London Road, Isleworth, Middlesex, TW7 4DE