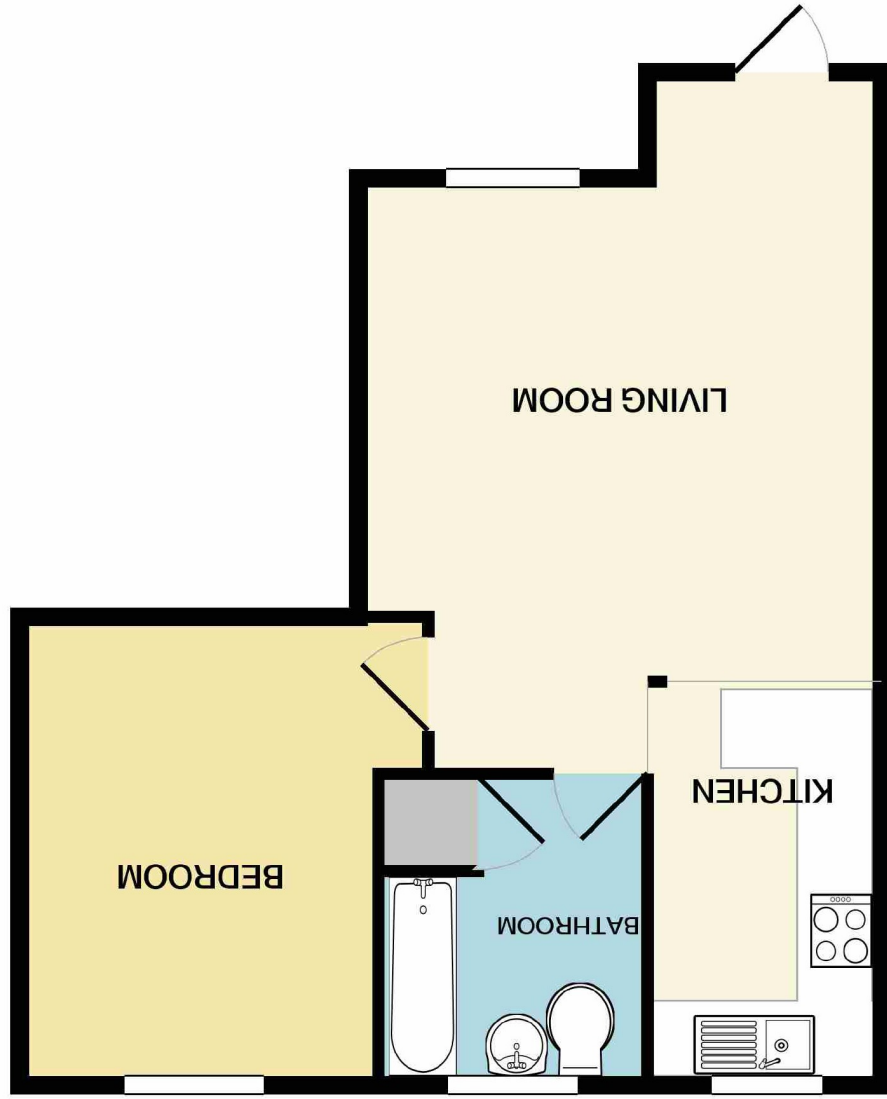


Measurements are approximate. Not to scale. Illustrative purposes only  
Made with Metropix ©2020







Flat C, Chapel Court, Chapel Street,  
Macclesfield, Cheshire SK11 8BJ

£116,500



### The Property

A charming one bedroom ground floor apartment set within the popular grade II listed Chapel Court development. With large sash windows, the apartment is filled with character and offers good accommodation to suit range of purchasers, particularly first time buyers and buy to let investors. Conveniently located, with only a short walk from the town centre and all local amenities with off road parking and lawned communal areas. Inside, the accommodation comprises briefly; Private entrance hallway, living area, modern kitchen, double bedrooms and a stylish bathroom. The property is warmed via electric heating. Internal viewing recommended.

### Locality

Location, Directions, Communal Entrance Hallway, Open Plan Living/ Kitchen 17'6 x 13'10 max (5.33m x 4.22m max ), Living Room 12'3 x 10'0 (3.73m x 3.05m ), Modern Kitchen 9'3 x 6'0 (2.82m x 1.83m ), Bedroom 12'5 x 9'0 (3.78m x 2.74m ), Stylish Bathroom 8'0 x 7'0 (2.44m x 2.13m ), Outside, Communal Gardens, Parking, Tenure

Postcode - SK11 8BJ

EPC Rating -

Floor Area - sq ft

Local Authority -

Council Tax - Band

