

18 Old Oak Common Lane,
Acton
London
W3 7EL
T: 020 8749 9798
E: acton@churchillestates.co.uk
www.churchillestates.co.uk



Falcondale Court, Park Royal, London NW10 7FR

£300 Per Week



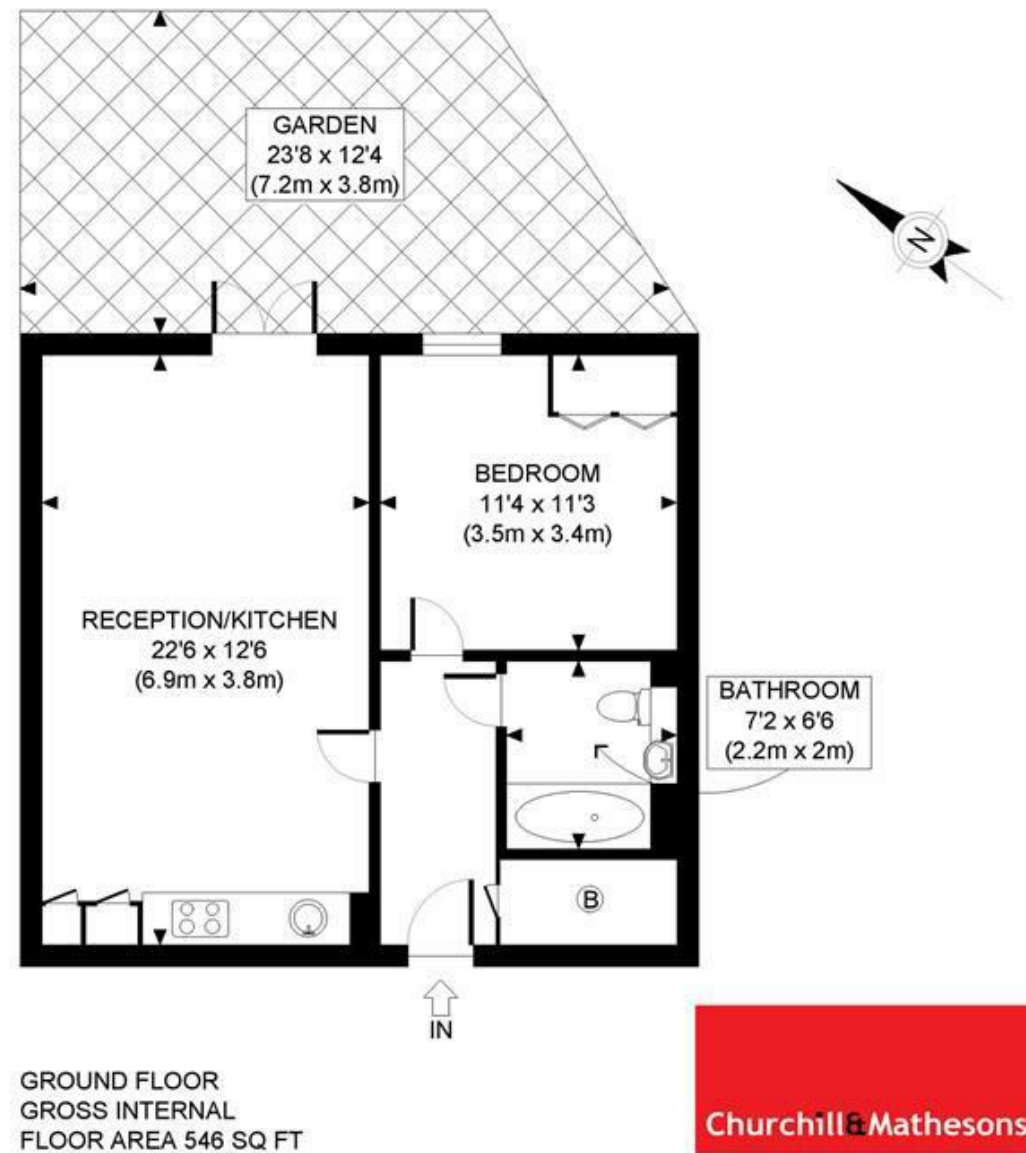
KEY FEATURES:

- Spacious ground floor flat with private patio
- Modern fitted kitchen
- Stylish bathroom
- FURNISHED ~ AVAILABLE NOW ~ EPC Rating B
- *** AVAILABLE WITH ZERO DEPOSIT ***

*** AVAILABLE WITH ZERO DEPOSIT *** Spectacular 1 bedroom flat in a brand new residential with allocated secured parking

- * Good sized bedrooms.
- * Spacious open plan modern fitted kitchen with integrated appliances
- * Large open plan reception room with access to private patio
- * Stylish fitted bathroom
- * On site gym access
- * Moments from Hanger Lane tube station and all amenities of the area

FURNISHED ~ AVAILABLE 13 APRIL ~ EPC Rating B



GROUND FLOOR
GROSS INTERNAL
FLOOR AREA 546 SQ FT

APPROX. GROSS INTERNAL FLOOR AREA: 546 SQ FT/ 51 SQM

PROPERTY PHOTO PLANS.co.uk
ONE STOP SHOP FOR PROPERTY MARKETING

Whilst every attempt has been made to ensure the accuracy of the floor plan contained here, measurements of the doors, windows, rooms and any other items are approximate and no responsibility is taken for any errors, omissions, or miss-statement. This plan is for illustrative purposes only and should be used as such by any prospective client. The services, systems and appliances shown have not been tested and no guarantee as to the operability or efficiency can be given.



Whilst every effort is made to give a fair description, the accuracy of these particulars is not guaranteed, neither do they constitute an offer or contract.

CHURCHILL ESTATE AGENTS have not tested any apparatus, equipment, fitting or services and so cannot verify that they are in working order. The buyer is advised to obtain verification from their solicitor or surveyor. Measurements are correct to within +/-6 A sonic tape is used. None of the statements contained in these particulars or any of our properties are to be relied upon as a representation of fact.