



Interior Designed Penthouse Apartment in Modern Portered Block

Boydell Court, St Johns Wood Park, St Johns Wood, NW8

Available Immediately - £1,950 per week* (£8,450 PCM)

*Additional fees apply

Boydell Court, St Johns Wood, NW8

£1,950 per week*

*Additional fees apply

- Reception
- Fully fitted open plan kitchen & dining area
- Conservatory
- Principal bedroom with en suite bathroom
- Two further double bedrooms
- Family bathroom (Jack and Jill)
- Terrace
- Secure parking
- Communal garden
- 24hr concierge

A stunning, interior designed penthouse apartment, set on the 10th and 11th floors of a modern gated complex on the borders of Swiss Cottage and St Johns Wood. The property boasts a bright and spacious reception room with an open plan dining room and bespoke kitchen. The 11th floor offers a stunning conservatory serving as a second reception room with unobstructed views over London. Boydell Court is excellently located for the amenities and transport and leisure facilities of Swiss Cottage and chic restaurants and boutiques of St Johns Wood.

- Available Immediately - Furnished/Unfurnished
- Camden Council Tax Band: H £4,021.14 PA
- EPC Rating: 70/C
- Approx. Gross Internal Area: 1,560 Sq Ft



Boydell Court, St Johns Wood Park, St Johns Wood, NW8

Available Immediately - £1,950 per week* (£8,450 PCM)

*Additional fees apply



Interior Designed Penthouse Apartment in Modern Portered Block

Boydell Court, St Johns Wood Park, St Johns Wood, NW8
Available Immediately - £1,950 per week* (£8,450 PCM)

*Additional fees apply



Interior Designed Penthouse Apartment in Modern Portered Block

Boydell Court, St Johns Wood Park, St Johns Wood, NW8
Available Immediately - £1,950 per week* (£8,450 PCM)

*Additional fees apply



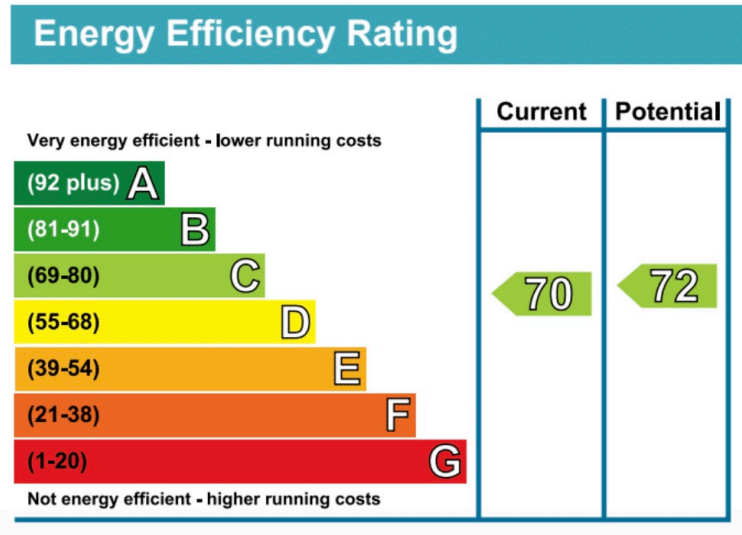
Interior Designed Penthouse Apartment in Modern Portered Block

Boydell Court, St Johns Wood Park, St Johns Wood, NW8
Available Immediately - £1,950 per week* (£8,450 PCM)

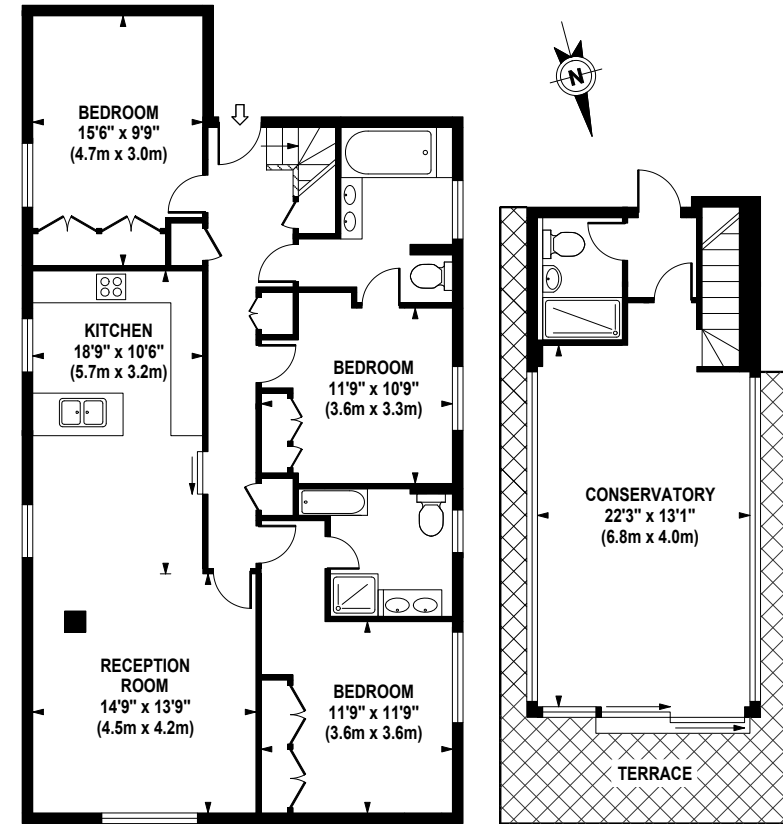
*Additional fees apply

Approx Gross Internal Area: **1,560 Sq Ft / 144.9 Sq M**

BOYDELL COURT
Approximate Gross Internal Area 1560 sq ft / 144.9 sq m



* A holding deposit of 1 weeks rent will be offset against the initial rental payment. The necessary paperwork should be completed within 15 days or such longer period as might be agreed. A security deposit equivalent to 5 weeks rent to be held during the tenancy against unpaid rent, bills, dilapidations and any other costs or losses incurred. Contract variations £50, Change of sharer £50, all inclusive of VAT at the prevailing rate.



Although every attempt has been made to ensure accuracy, all measurements are approximate. The floor plan's for illustrative purposes only and not to scale. Measured in accordance to RICS standards. DE-PHOTOGRAPHY.NET

Please note that the above measurements are approximate only. Any internal photographs are intended as a guide only and it should not be assumed that any of the furniture is included