



Tib Street, Manchester

£900 PCM

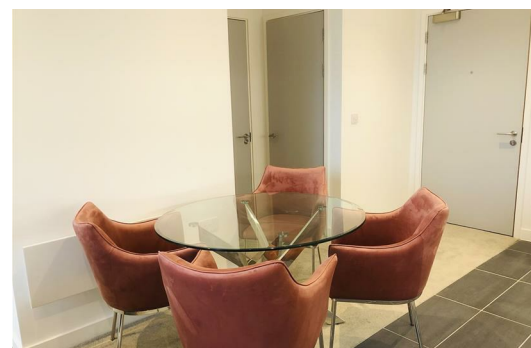
Video/Virtual Tour Available

Transmission House is a fantastic set of brand new apartments situated on Tib Street in the highly sought after area of The Northern Quarter, opposite Affleck's Palace. Perfect for young professionals, this fantastic 2 bed flat benefits from a concierge, roof terrace and sits within a few minutes' walk to Manchester's city centre.

With large floor to ceiling windows throughout, this flat is flooded with natural light from the kitchen to the bedrooms. The open plan kitchen and living area is large with cream carpet for the most part but offers sleek black tiles in the kitchen for practicality. With great views from your new home and lots of space, you'll have the perfect space to host dinner and drinks with friends and family. The kitchen is of a high standard and includes an integrated oven, hob and extractor fan and a large fridge and freezer with plenty of cupboard space to go around.

The bedrooms are a great size and have lots of natural light while also both benefiting from en-suite facilities which include a modern 3-piece suite and fittings including a heated towel rail. It has a large mirror, making it feel even bigger, and plenty of shelf space.

In terms of location, you couldn't be in a better spot. Whether you work in the city or out of it, you're just a few minutes from the city centre and all its offices and transport links. You'll be just a stone's throw from Market Street with all its





Ascend

Built on higher standards