

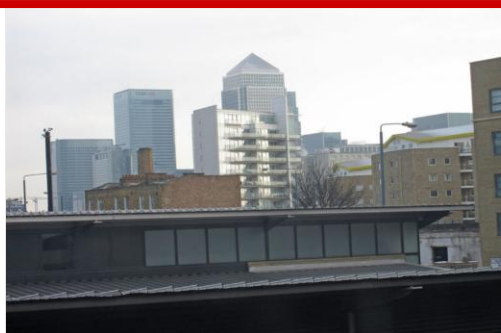


Saloon House, Brunton Place, Limehouse, E14, 7LL

£1,250 pcm

*Available 12th September, 2020 * Good Size Flat : Zone Two : C/TAX B £969.75 : EPC rating C:
Close to LIMEHOUSE DLR & Basin: TESCO Express & HUSK internet Cafe : Separate
KITCHEN & bathroom both with WINDOWS : Juliette Balcony : Stairs to First Floor : No Parking :
Note* plus Bills

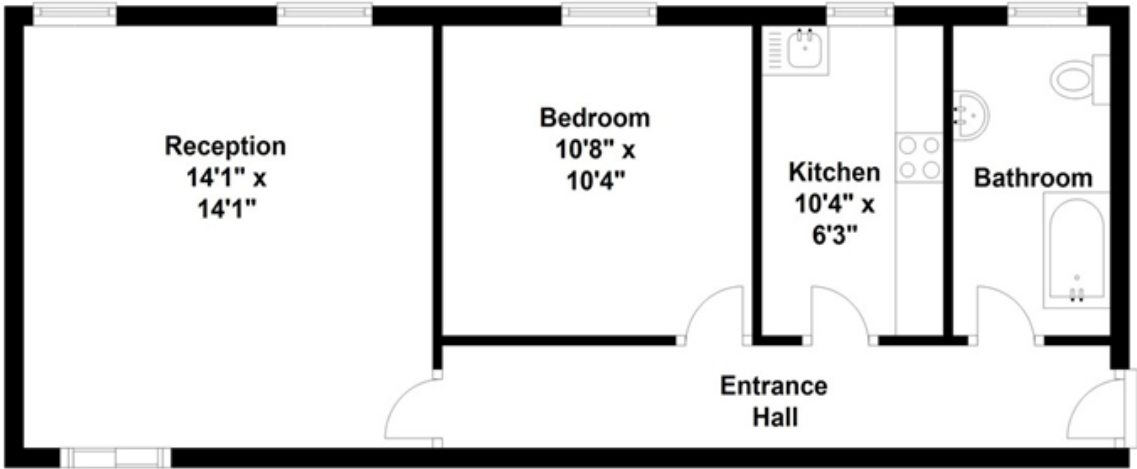
- Large one bedroom flat
- Bathroom with window
- Separate kitchen with window
- Unfurnished
- Note: Plus bills* Elec Gas Water C/T



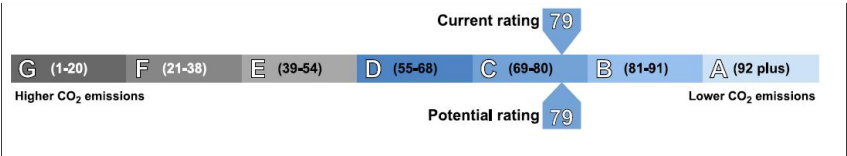
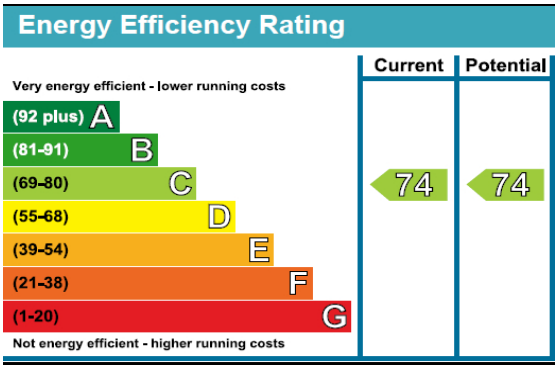


1 Saloon House

Approx. 521.2 sq. feet



Total area: approx. 521.2 sq. feet



655 Commercial Road, London, E14 7LW

Disclaimer
River Habitat, their clients and any joint agents give notice that: 1. They have no authority to make or give any representations or warranties in relation to the property. These particulars do not form any part of an offer or contract and must not be relied upon as statements or representations of fact. 2. Any areas, measurements or distances are approximate. The text, photographs and plans are for guidance only and are not necessarily a complete representation of the property. Photographs are taken using a wide angle lens camera. 3. It should not be assumed that the property has all necessary planning, building regulations or other consents and River Habitat have not tested any services, equipment or other facilities. Purchasers must satisfy themselves by inspection or otherwise