



Apartment 15 City Walk 69 Irving Street

Birmingham, B1 1DH

£850 PCM

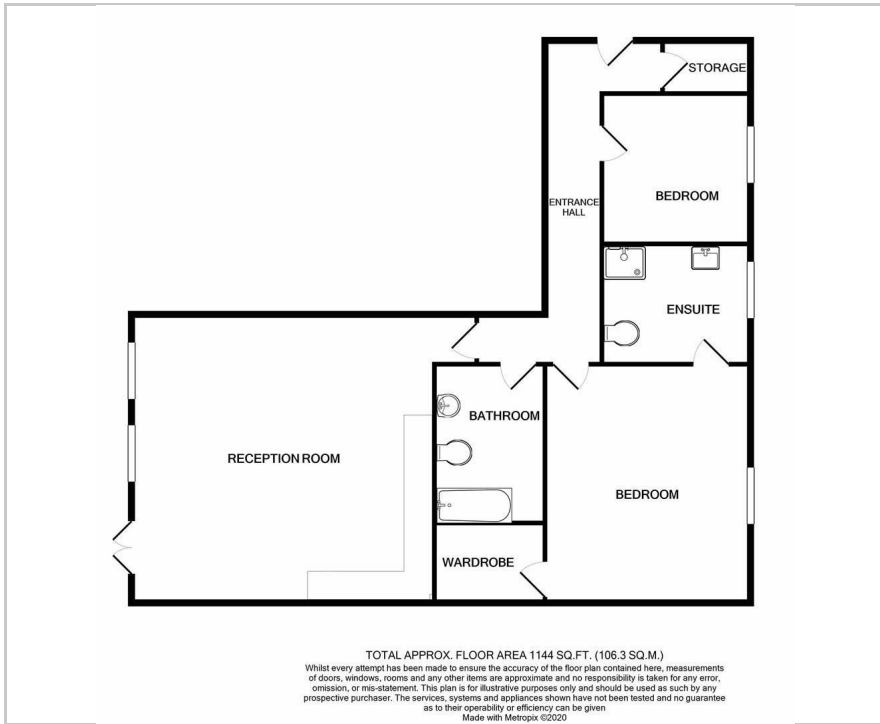
**WE'RE OPEN**

For viewings, virtual viewings and valuations

Visit: [lvproperty.co.uk](http://lvproperty.co.uk)



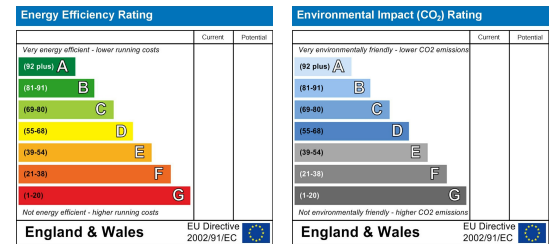
## Floor Plan



## Area Map



## Energy Efficiency Graph



## Viewing

Please contact our LV PROPERTY Office on 01212857575 if you wish to arrange a viewing appointment for this property or require further information.

- TWO BEDROOM APARTMENT ■ JULIETTE BALCONY
- SECURE ALLOCATED ■ WITHIN WALKING DISTANCE TO NEW STREET PARKING
- CLOSE TRANSPORT LINKS ■ SELLING WITH NO CHAIN

LV PROPERTY are proud to offer this immaculate two bedroom apartment offering a large space, great location and Juliette balcony.

The apartment is located on the ground floor, within the sought after City Walk Apartments. A sought after development in Birmingham's vibrant City Centre.

The apartment offers a spacious entrance hall, open plan lounge, fitted kitchen with all integrated appliances, from the lounge there are French doors providing access to the Juliette balcony space offering lots of natural light and air into the apartment two double bedrooms, the main bedroom offers an integrated wardrobe, and an ensuite. The second bedroom is equally a good size. The family bathroom has an overhead bath shower and the good size storage cupboard complete this space.

Excellent transport links with the M6, M5, M42, and A38 all easily accessible and this location can not be beaten. It is within a five minute walk to Birmingham's City Centre including the Bullring, Grand Central Station and the Mailbox as well as local shops, bars, restaurants and so much more recommended.



These particulars, whilst believed to be accurate are set out as a general outline only for guidance and do not constitute any part of an offer or contract. Intending purchasers should not rely on them as statements of representation of fact, but must satisfy themselves by inspection or otherwise as to their accuracy. No person in this firm's employment has the authority to make or give any representation or warranty in respect of the property.



0121 285 7575  
www.lvproperty.co.uk

157c Warstone Lane, Jewellery Quarter,  
Birmingham, West Midlands, B18 6NZ