



Whitehall Gardens, London, W4 3LT

Guide Price £1,250,000

**WHITMAN & CO.**

SALES · LETTINGS · COMMERCIAL



- Five bed/three bath period house
- OFSTED rated outstanding school catchment
- Master bedroom with ensuite
- Popular residential street
- Wrap around kitchen extensive
- Close to numerous amenities

Tenure - Freehold  
Local authority - Hounslow  
Council Tax - Band G

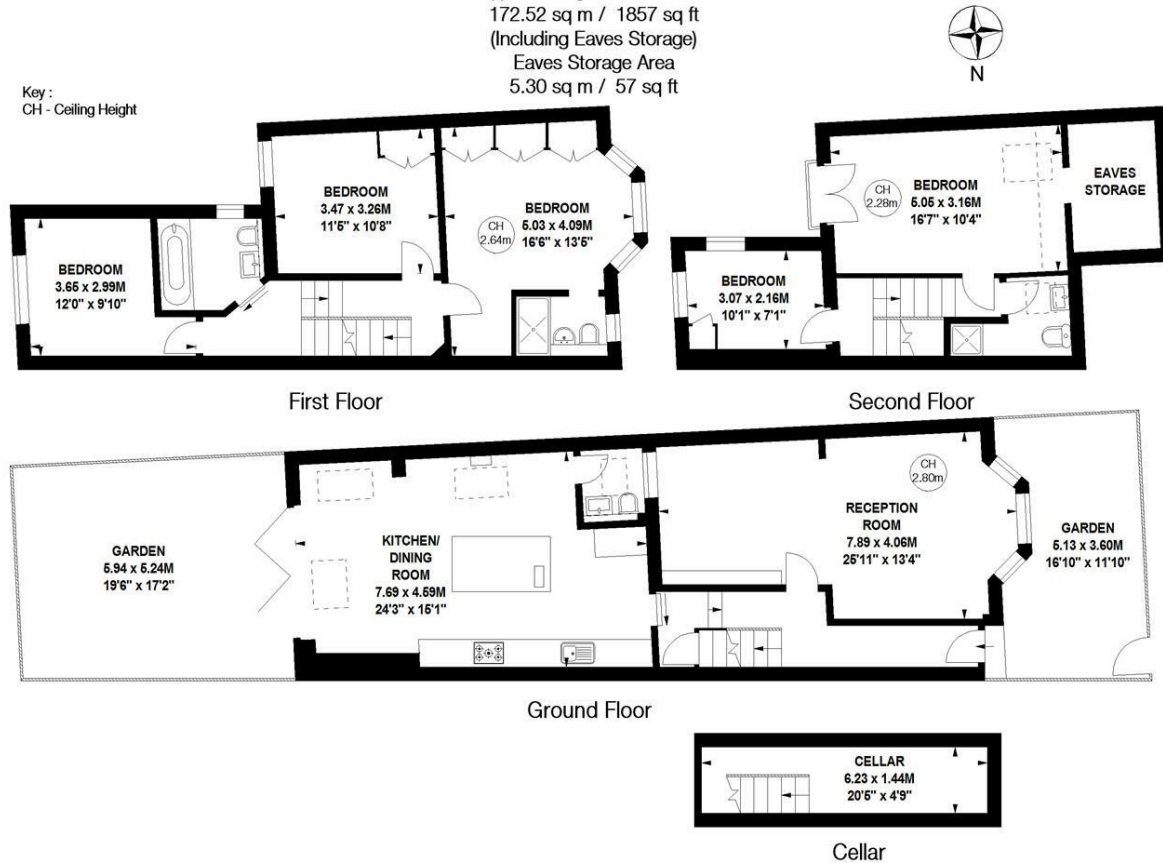
## THE PROPERTY

A recently refurbished and extended period property located on this popular residential street in the Grove Park area of Chiswick. The accommodation comprises a master bedroom with ensuite and fitted wardrobes, four further bedrooms, additional ensuite, family bathroom, 26' double reception room, wrap-around kitchen extension with bespoke kitchen and dining space, private garden, cloakroom, cellar. Whitehall Gardens is conveniently located within a short walk of the river, Chiswick House and Grounds and the extensive array of shops, cafes and restaurants on Chiswick High Road. The house is within the catchment area of both Grove Park and Strand on the Green primary schools (OFSTED Outstanding). Transport links include Gunnersbury and Chiswick Stations, local bus routes and the A4/M4 for routes in and out of London.

### Whitehall Gardens, W4

Approximate gross internal area  
172.52 sq m / 1857 sq ft  
(Including Eaves Storage)  
Eaves Storage Area  
5.30 sq m / 57 sq ft

Key:  
CH - Ceiling Height



Not to scale, for guidance only and must not be relied upon as a statement of fact.  
All measurements and areas are approximate only

## SITUATION



5-7 Turnham Green Terrace, Chiswick, London, W4 1RG

Tel 020 8747 8300

E-mail [sales@whitmanandco.com](mailto:sales@whitmanandco.com)

Website [www.whitmanandco.com](http://www.whitmanandco.com)



MISREPRESENTATION ACT 1967

Whitman & Co. for themselves and for the vendors give notice that these particulars do not constitute any part of, an offer of contract. All statements contained in these particulars are made without responsibility on the part of Whitman & Co. or the vendor. None of the statements contained in these particulars is to be relied upon as statements or representations of facts. Any intending purchaser must satisfy himself by inspection or otherwise as to the correctness of each of the statements contained in these particulars. The vendor does not make or give, and neither Whitman & Co. or any person in their employment has any authority to make or give, any representation or warranty whatever in relation to the property.