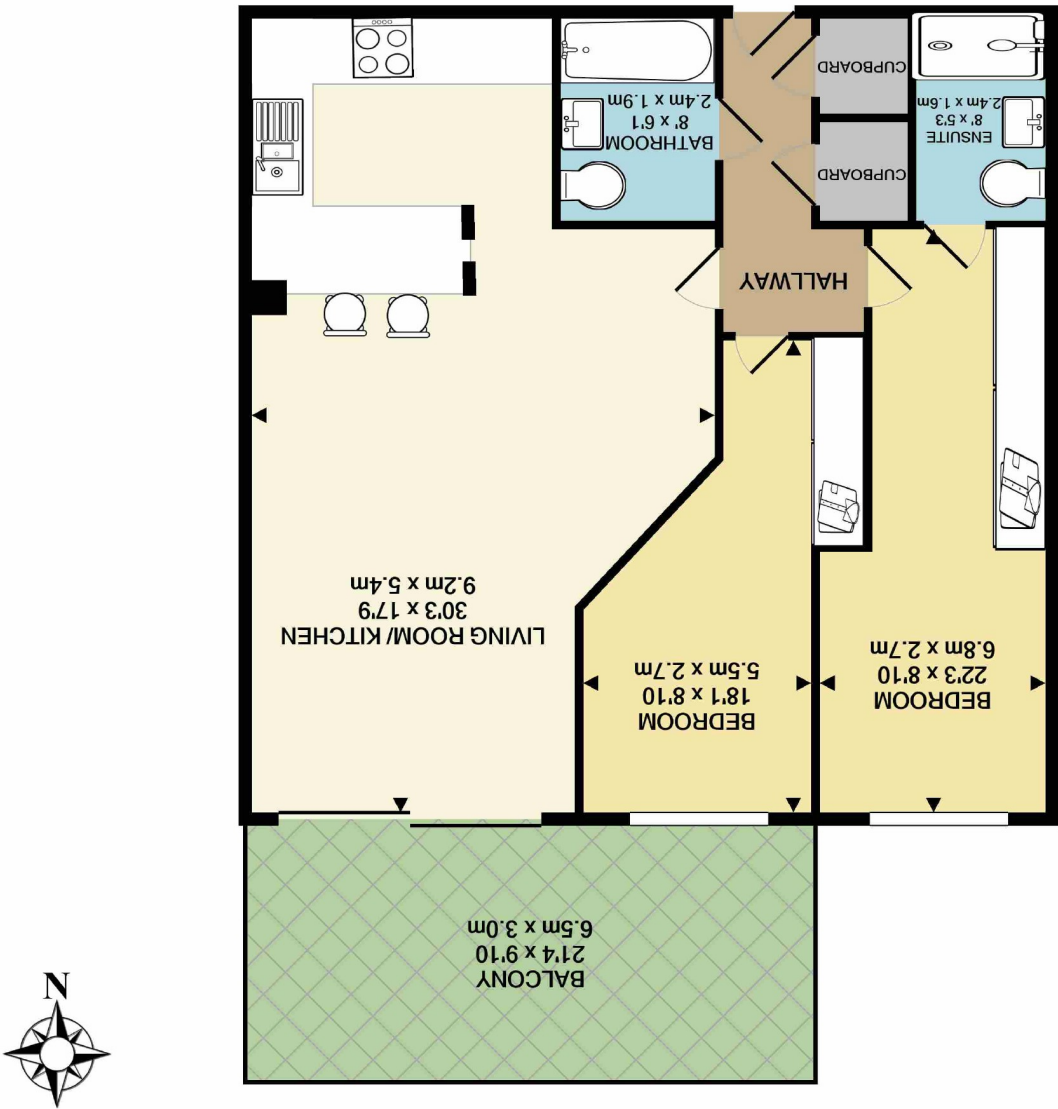


These particulars are believed to be accurate but they are not guaranteed and do not form a contract. Neither Jordan Fishwick nor the vendor or lessor accept any responsibility in respect of these particulars, which are not intended to be statements or representations of fact and any intending purchaser or lessee must satisfy himself by inspection or otherwise as to the correctness of each of the statements contained in these particulars. Any floorplans on this brochure are for illustrative purposes only and are not necessarily to scale.

TOTAL APPROX. FLOOR AREA 911 SQ.FT. (84.6 SQ.M.)
Measurements are approximate. Not to scale. Illustrative purposes only
Made with Metropix ©2020





Quantum House, West Didsbury M20 2NE
£1,500 Per calendar month



The Property

*** AVAILABLE END OF FEB *** SEE VIDEO TOUR *** A stylishly presented modern second floor two double bedroom apartment in the impressive new development of Quantum House on Kensal Drive in West Didsbury commissioned by Messrs PJ Livesey. Lying within beautifully presented ground with quality fittings, the living space comprises: - Entrance hallway with 2 large storage cupboards, modern light fitting and alarm system. A large open plan Kitchen, Dining and Living space spanning over 30ft, with integrated Neff appliances including dishwasher, wine fridge and induction hob, with useful breakfast bar and dining area, illusion blinds and large south facing balcony. Master bedroom over 22ft with fitted wardrobes and spacious modern en-suite shower

room with chrome fittings. Second bedroom over 18ft with fitted wardrobes. Main bathroom with chrome fittings. With expansive communal lounge, lift and 2 secure parking spaces. Available February - CALL NOW TO VIEW - 0161 434 5290

Directions

Postcode M20 2NE

- Modern apartment
- Stylishly presented
- Kithcen with integrated Neff appliances
- Living room and kitchen over 30ft
- Two spacious double bedrooms
- Modern Bathrooms
- 2 secure parking spaces
- South facing balcony

Postcode - M20 2NE

EPC Rating - B

Floor Area - 911 sq ft

Local Authority -

Council Tax - Band D

