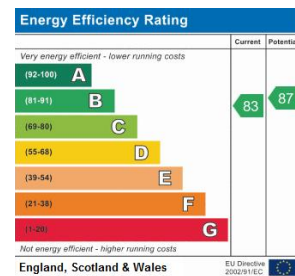
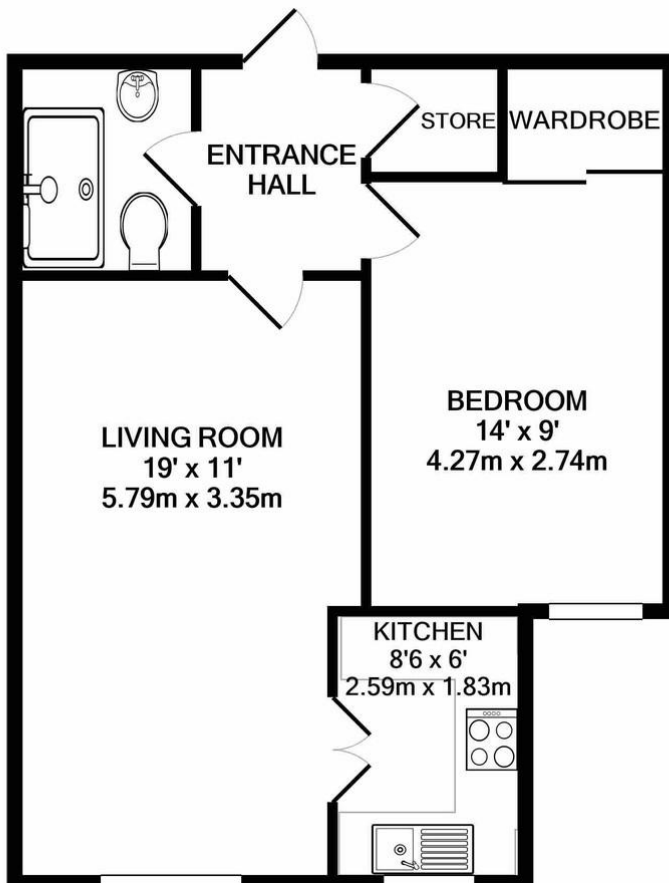




# Property Summary

Situated in the highly sort after over 60's Retirement McCarthy Stone development off Sandhurst Street in Oadby, this first floor one bedroom apartment is neatly presented throughout. Comprising entrance hall, living room, fitted kitchen, bedroom, shower room. The property is available with No Upward Chain and has the added advantages of a lift, laundry room and a communal living room. Early viewing is highly recommended to appreciate the condition.



Address:  
Rowleys Court, Oadby  
Reference:  
PG1

- Over 60's Complex
- First Floor Flat
- Desirable Location
- One Bedroom
- Fitted Kitchen
- Pleasant Communal Gardens
- Parking Available
- Lifts To all Floors

phillips george | sales & lettings

Agents Note: Whilst every care has been taken to prepare these sales particulars, they are for guidance purposes only. All measurements are approximate and for general guidance purposes only and whilst every care has been taken to ensure their accuracy, they should not be relied upon and potential buyers are advised to recheck the measurements

46 Long Street, Wigston, Leicestershire, LE18 2AH

info@phillipsgeorge.co.uk  
0116 216 8178

