



Collier Row Road,
Romford, RM5 2BB

Guide Price £275,000 - £300,000

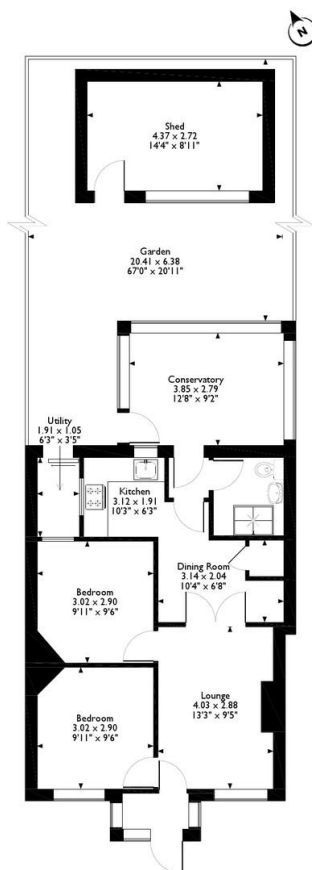
Property Summary

Lovely terraced 2 bedroom bungalow, though needs some modernisation this will make a nice home for someone who likes a project to make it there own. Added benefits of a conservatory looking over the garden. Utility room. Located for Collier Row shopping parade and bus routes. No chain EPC D



EPC D

Approximate Gross Internal Area
Main House = 63 Sq M/679 Sq Ft
Outside Shed = 12 Sq M/128 Sq Ft



Please note that the location of doors, windows and other items are approximate and this diagram is to be used for illustrative purposes only. Measurements are approximate.

- TERRACE BUNGALOW
- TWO BEDROOMS
- NO ONWARD CHAIN
- SOME MODERNISATION
- CONSERVATORY
- GAS CENTRAL HEATING
- DOUBLE GLAZING
- UTILITY ROOM
- LOCATION FOR ALDI AND COLLIER ROW SHOPS
- BUS ROUTES

35 Victoria Road
Romford
Essex
RM1 2LH

www.gbpestates.co.uk
sales@gbpestates.co.uk
01708 504455

Agents Note: Whilst every care has been taken to prepare these sales particulars, they are for guidance purposes only. All measurements are approximate are for general guidance purposes only and whilst every care has been taken to ensure their accuracy, they should not be relied upon and potential buyers are advised to recheck the measurements