



27 Danygraig Road, Port Tennant, Swansea, City And County of Swansea, SA1 8LY

Asking Price £145,950

An extended three bedroom middle terrace property in the sought after area of Port Tennant, with close links to Swansea city centre, all local amenities and schools.

The property briefly comprises to the ground floor; porch, hall, living room, lounge, dining room and kitchen. To the first floor are three bedrooms and a bathroom. Benefits also include original feature including decorative coved ceilings and wood panelling around windows, double glazing and central heating.

A front forecourt and a rear tiered garden with access via a gate. EPC Rating E.

The Accommodation Comprises

Ground Floor

Entrance

Entry via wooden door to porch.

Hall



Laminate flooring, storage cupboard, stairs to first floor, radiator.

Living Room 11'1" x 11'4" (3.38 x 3.45)



Double glazed bay window to front, laminate flooring, coving, radiator.

Lounge 11'7" x 9'5" (3.54 x 2.86)



Double glazed window to rear, laminate flooring, coving, radiator.

Dining Room 15'10" x 9'11" (4.83 x 3.02)

Double glazed window to side, laminate flooring, radiator.

Kitchen 6'6" x 9'11" (1.97 x 3.02)



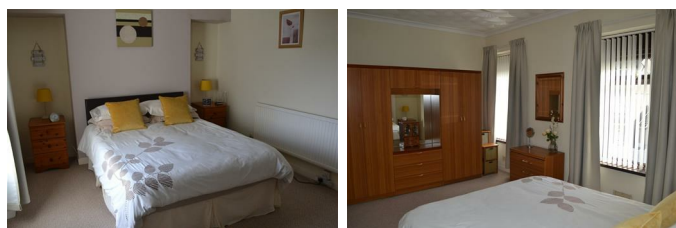
A range of eye level and base units with worktop space over, integrated four ring gas hob, electric oven and extractor fan. Stainless steel sink with drainer and mixer tap, plumbing for washing machine and dishwasher. Double glazed windows to side and rear, radiator.

First Floor

Landing

Window to bedroom three, storage cupboard, carpeted.

Bedroom 1 11'1" x 15'4" (3.38 x 4.67)



Two double glazed windows to front, coving, carpeted, radiator.

Bedroom 2 11'10" x 9'5" (3.61 x 2.86)



Double glazed window to rear, carpeted, radiator.

Bedroom 3 14'2" x 6'3" (4.31 x 1.91)

Double glazed window to side, storage cupboard housing combination boiler, radiator.

Bathroom



A three piece suite comprising bath with shower over, WC and wash hand basin. Frosted double glazed window to rear, storage cupboard with hot water tank, radiator.

External

Rear Garden



A courtyard leading to a paved tiered garden with rear access.

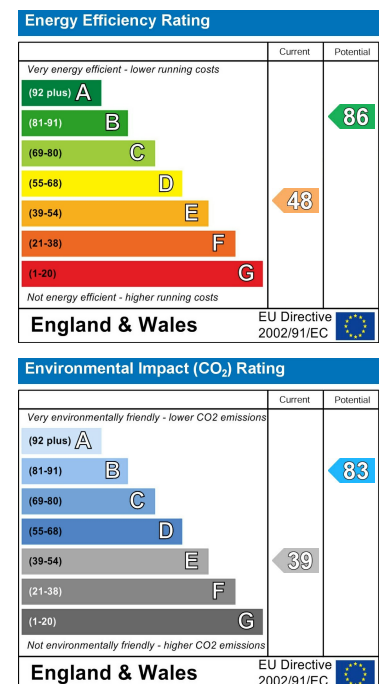
Floor Plan



Area Map



Energy Efficiency Graph



These particulars, whilst believed to be accurate are set out as a general outline only for guidance and do not constitute any part of an offer or contract. Intending purchasers should not rely on them as statements of representation of fact, but must satisfy themselves by inspection or otherwise as to their accuracy. No person in this firm's employment has the authority to make or give any representation or warranty in respect of the property.