



21 Templeton Way, Penlan, Swansea, City And County of Swansea, SA5 7JY
Asking Price £105,000

A modern two bedroom middle terrace property located on a popular development with good access to local amenities, M4 and City Centre.

The accommodation comprises to the ground floor; hallway, kitchen and living room. To the first floor are two bedrooms and bathroom. Externally to the rear is an enclosed garden and there are two parking spaces to the front.

EPC - C.

The Accommodation Comprises

Ground Floor

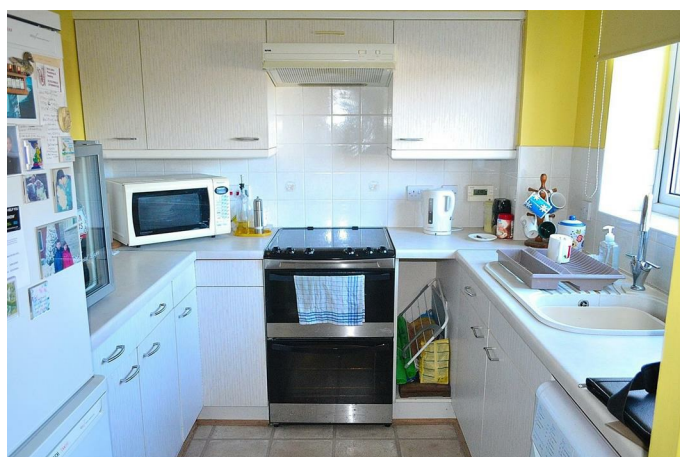
Entrance

Via uPVC door with glazed panel to hallway.

Hallway

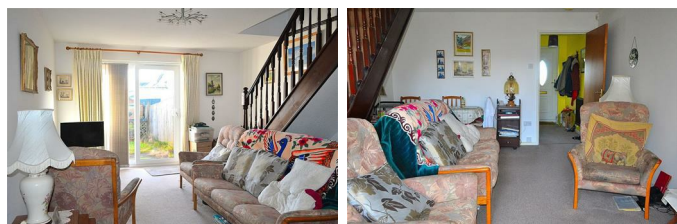
Open to kitchen, door to lounge, radiator.

Kitchen 7'11" x 7'10" (2.41 x 2.39)



Fitted with a range of wall and base units, inset sink with drainer and mixer tap, plumbed for washing machine. Double glazed window to the front, wall mounted gas combination boiler, tiled flooring.

Living Room 16'9" x 12'0" (5.11 x 3.65)



Double glazed sliding patio doors to the rear, staircase to the first floor, two radiators.

First Floor

Landing

Storage cupboard, doors to bedrooms and bathroom.

Bedroom 1 12'4" x 11'9" (3.75 x 3.59)



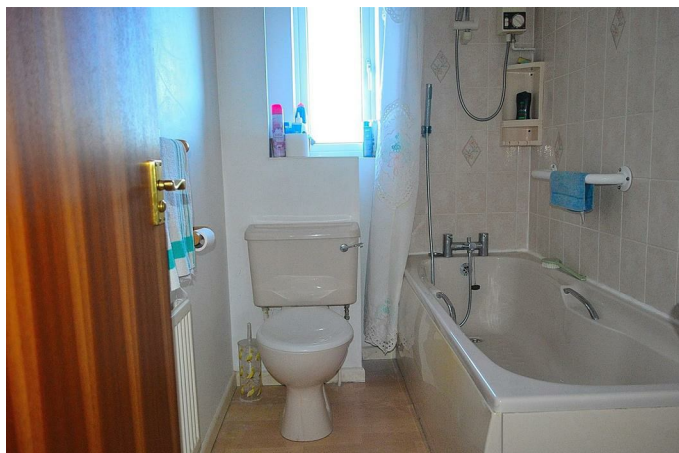
Double glazed window to the rear, fitted wardrobes.

Bedroom 2 10'6" x 6'8" (3.20 x 2.04)



Double glazed window to the front, radiator.

Bathroom



A three piece suite comprising; panelled bath with shower over, low level w/c and wash hand basin. Frosted double glazed window to the front, tiled walls, radiator.

External

Front Garden

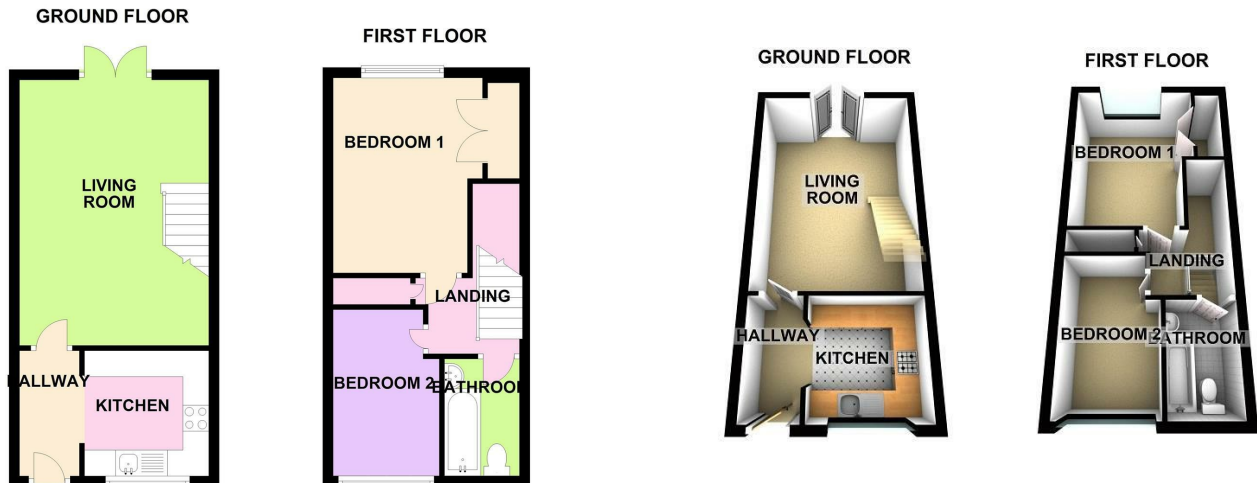
Path leading to the property, lawn.

Rear Garden

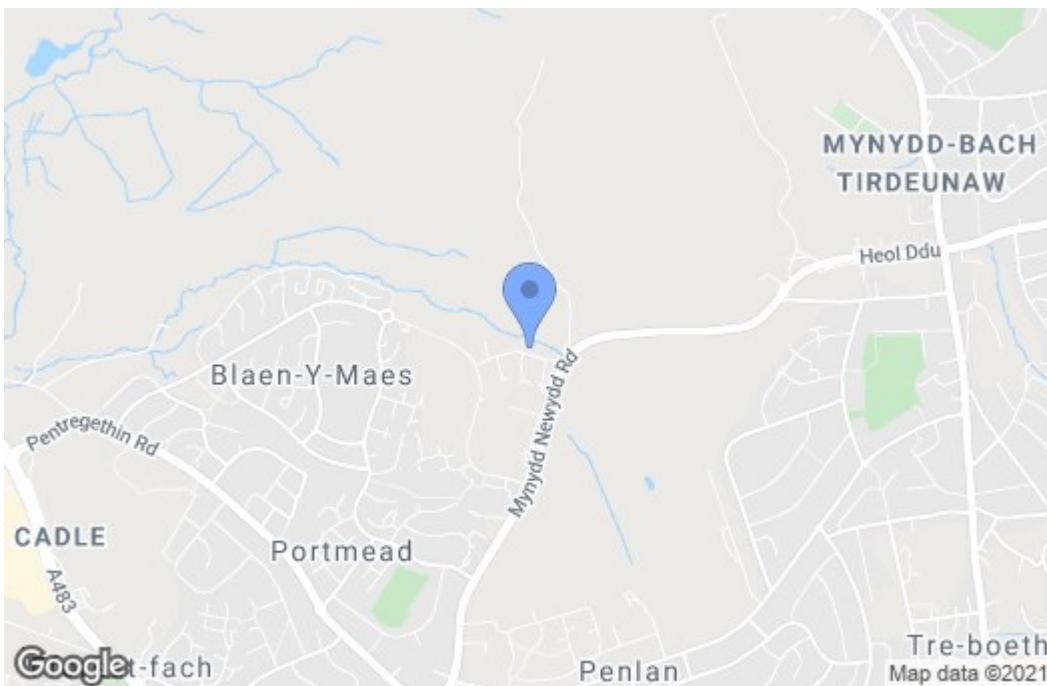


Enclosed garden with lawn and patio areas.

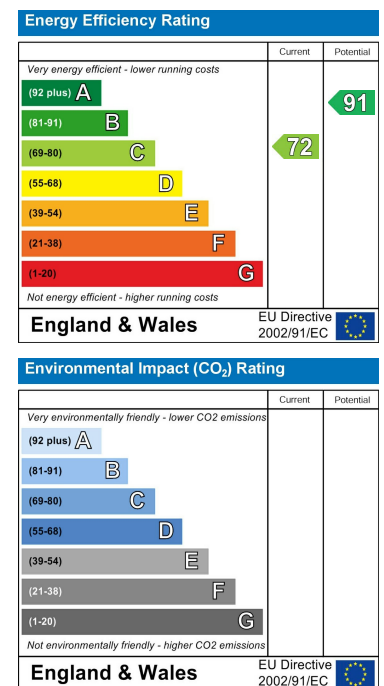
Floor Plan



Area Map



Energy Efficiency Graph



These particulars, whilst believed to be accurate are set out as a general outline only for guidance and do not constitute any part of an offer or contract. Intending purchasers should not rely on them as statements of representation of fact, but must satisfy themselves by inspection or otherwise as to their accuracy. No person in this firm's employment has the authority to make or give any representation or warranty in respect of the property.