



5 Cefn Coed Crescent, Cockett, Swansea, City And County of Swansea, SA2 0XY

Asking Price £189,950

A traditional bay fronted, three bedroom family home, set in quiet cul-de-sac location in the popular area of Cockett, which has easy access to Fforestfach Retail Park, City Centre and the M4 and just a short drive away from the Gower.

The accommodation comprises of an entrance hall, lounge and kitchen/dining room on the ground floor. With three bedrooms (two doubles) and a bathroom on the first floor. The property benefits from gas central heating, double glazing, front and rear gardens and off road parking for several vehicles. EPC Rating - D.

The Accommodation Comprises

Ground Floor

Hall

Entered via double glazed door to front, radiator, laminate flooring, staircase to first floor.

Lounge 13'5" x 11'9" (4.08 x 3.58)



Double glazed bay window to front, coved ceiling, radiator.

Kitchen/ Dining Room 11'10" x 17'11" (3.60 x 5.47)



Fitted with base and wall units, 1+1/2 bowl sink unit with tiled splashbacks, plumbing for washing machine, gas cooker point, extractor hood, double glazed window to rear, frosted double glazed window to side, tiled flooring, double glazed door leading to the rear garden.

First Floor

Landing

Double glazed window to side.

Bedroom 1 13'1" x 11'9" (3.99 x 3.58)



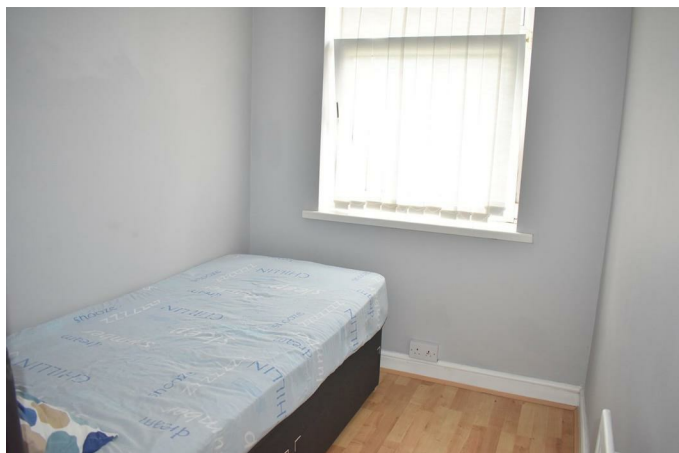
Double glazed bay window to front, radiator.

Bedroom 2 11'10" x 11'9" (3.61 x 3.58)



Double glazed window to rear, laminate flooring, radiator.

Bedroom 3 7'3" x 6'2" (2.22 x 1.87)



Double glazed window to front, laminate flooring, radiator.

Bathroom



Three piece suite comprising bath with shower over, wash hand basin and WC. Tiled walls, heated towel rail, tiled flooring, frosted double glazed window to rear.

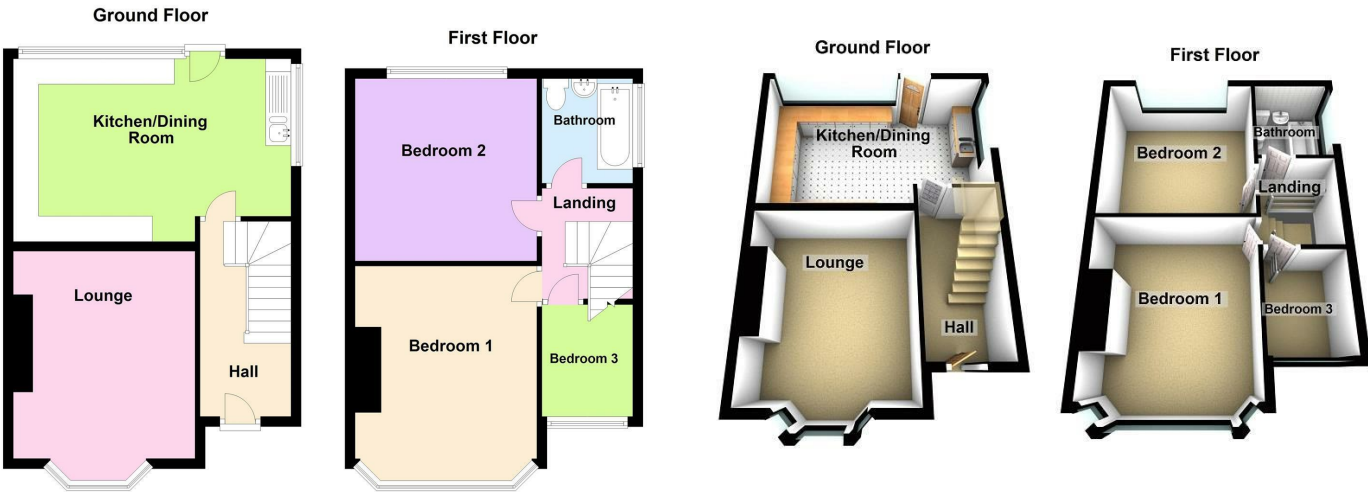
External



To the front of the property is a lawned garden with steps leading to the front and side access to the rear garden.

The rear garden is mainly laid to lawn with a block built garden shed.

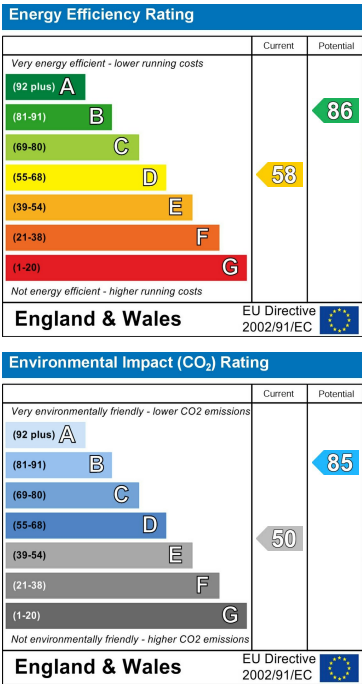
Floor Plan



Area Map



Energy Efficiency Graph



These particulars, whilst believed to be accurate are set out as a general outline only for guidance and do not constitute any part of an offer or contract. Intending purchasers should not rely on them as statements of representation of fact, but must satisfy themselves by inspection or otherwise as to their accuracy. No person in this firms employment has the authority to make or give any representation or warranty in respect of the property.