



*jordanfishwick*

SALFORD  
Richmond Court



**Richmond Court, Salford**  
**M3 6DW**  
 Price £160,000

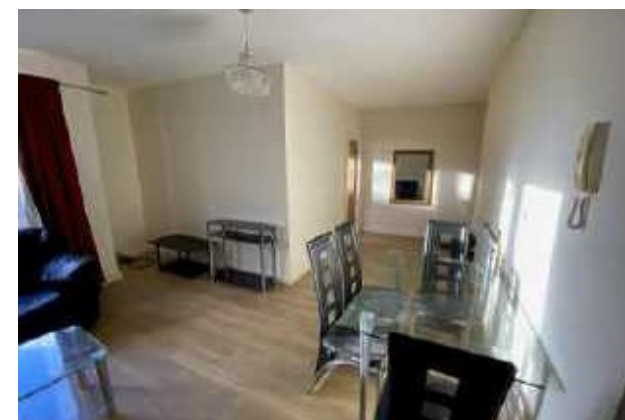


## The Property

Online Video...<https://youtu.be/gYhFhhBVhfU>

This deluxe first floor three bedroom apartment is huge and is located near Salford University Campus. Recently decorated throughout and well maintained. . Entrance hall, large living room with fitted kitchen and appliances, Juliet balcony. Three double bedrooms and attractive bathroom suite with separate shower cubicle. Parking.

## Directions





- 1st Floor
- Three Double Bedrooms
- Juliet Balcony
- Huge Living Room
- Parking
- No Chain
- EPC Rating D

**Postcode** - M3 6DW

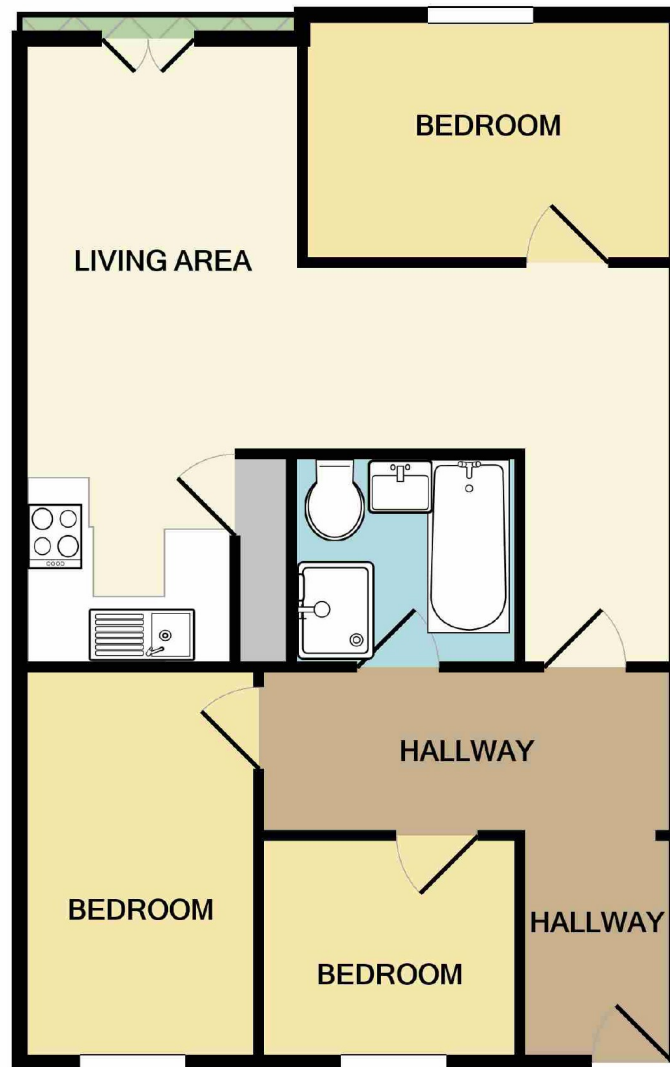
**EPC Rating** - D

**Floor Area** - sq ft

**Local Authority** - Salford Council

**Council Tax** - Band B





Measurements are approximate. Not to scale. Illustrative purposes only  
Made with Metropix ©2020



These particulars are believed to be accurate but they are not guaranteed and do not form a contract. Neither Jordan Fishwick nor the vendor or lessor accept any responsibility in respect of these particulars, which are not intended to be statements or representations of fact and any intending purchaser or lessee must satisfy himself by inspection or otherwise as to the correctness of each of the statements contained in these particulars. Any floorplans on this brochure are for illustrative purposes only and are not necessarily to scale.

Offices also at:  
Chorlton | Didsbury | Disley | Glossop | Hale | Macclesfield | Manchester | Sale | Wilmslow | Withington

68 The Arches, Whitworth Street West, Manchester, M1

**0161 833 9499**

[manchester@jordanfishwick.co.uk](mailto:manchester@jordanfishwick.co.uk)  
[www.jordanfishwick.co.uk](http://www.jordanfishwick.co.uk)