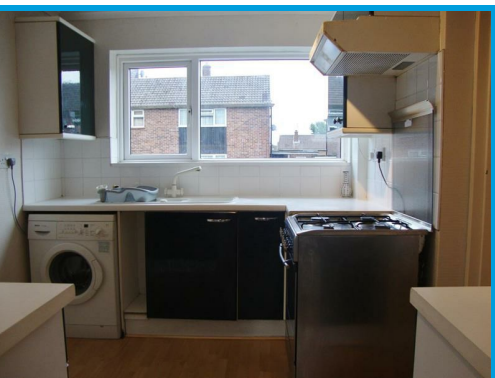




Rickyard, Guildford Surrey, GU2 8JR

£1,650 PCM

Located within easy access of Surrey Research Park & Royal Surrey Hospital, this spacious three/ four bedroom house is ideal for both students and sharers.



## Description

Located within easy access of Surrey Research Park & Royal Surrey Hospital, this spacious three/ four bedroom house is ideal for both families and sharers. On the ground floor the property comprises a kitchen with appliances, utility room, reception room and lounge/ bedroom 4. Upstairs the property has three bedrooms and a bathroom with shower. Further features include a good size garden and off street parking.



Energy Efficiency Rating		Current	Potential
Very energy efficient - lower running costs			
(92 plus) A			
(81-91) B			
(69-80) C			
(55-68) D			
(39-54) E			
(21-38) F			
1-10 G			
Not energy efficient - higher running costs			
		68	86
<b>England &amp; Wales</b>			
	EU Directive 2002/91/EC		

Environmental Impact (CO <sub>2</sub> ) Rating		Current	Potential
Very environmentally friendly - lower CO <sub>2</sub> emissions			
(92 plus) A			
(81-91) B			
(69-80) C			
(55-68) D			
(39-54) E			
(21-38) F			
1-10 G			
Not environmentally friendly - higher CO <sub>2</sub> emissions			
		66	86
<b>England &amp; Wales</b>			
	EU Directive 2002/91/EC		

