



Hollins Lane Rivelin Sheffield S6 5GQ
£159,500

Hollins Lane

Sheffield S6 5GQ

£159,500

**** GARAGE AND PARKING ** GROUND FLOOR FLAT **** An early inspection is recommended to appreciate this exceptionally well presented two bedroom, ground floor apartment enjoying stunning views over the Rivelin Valley. The property benefits from off road parking, a garage, beautiful communal gardens and has gas central heating and uPVC double glazing throughout. In brief, the living accommodation comprises: Entrance hallway. Modern shower room with wash basin and WC. Newly installed kitchen with a modern range of wall, base and drawer units, integrated double oven, electric hob with extractor over and integrated fridge and freezer. Two generously proportioned bedrooms, both benefiting from fitted wardrobes.

- GROUND FLOOR
- BEAUTIFUL COMMUNAL GARDENS
- GARAGE AND PARKING
- MODERN INTERIOR
- WELL PRESENTED THROUGHOUT
- STUNNING VIEWS





OUTSIDE

Beautiful and well kept communal gardens. Garage.

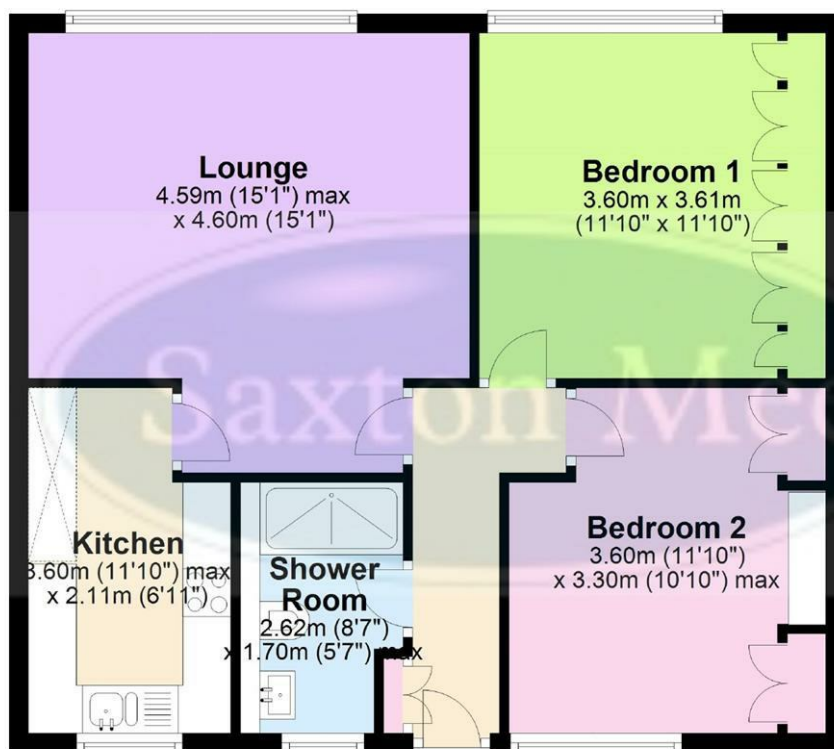
LOCATION

Situated in this extremely popular area of Stannington with excellent amenities close-by. Regular public transport. Easy access to Hospitals, Universities, Sheffield City Centre and Motorway links.

Whilst we endeavour to make our sales particulars fair, accurate and reliable, they are only a general guide to the property. If there is any point which is of particular importance to you, please contact the relevant office. The Agents have not tested any apparatus, equipment, fittings or services and so cannot verify they are in working order. The buyer is advised to obtain verification. All plans, floor plans and maps are for guidance purposes only and are not to scale. Please note all measurements are approximate and should not be relied upon as exact. Under no circumstances should they be relied upon as exact or for use in planning carpets and other such fixtures, fittings or furnishings. YOUR HOME IS AT RISK IF YOU DO NOT KEEP UP REPAYMENTS ON A MORTGAGE OR OTHER LOAN SECURED ON IT.

Ground Floor

Approx. 60.7 sq. metres (653.5 sq. feet)



Total area: approx. 60.7 sq. metres (653.5 sq. feet)

Floor plans are for guidance purposes only and under no circumstances should they be relied upon for use in planning carpets and other such fixtures fittings or furnishings All measurements are approximate.
Plan produced using PlanUp.

Crookes
Hillsborough
Stocksbridge

245 Crookes, Sheffield S10 1TF
82 Middlewood Road, Sheffield S6 4HA
462 Manchester Road, Sheffield S36 2DU

T: 0114 266 8365
T: 0114 231 6055
T: 0114 287 0112

www.saxtonmee.co.uk

