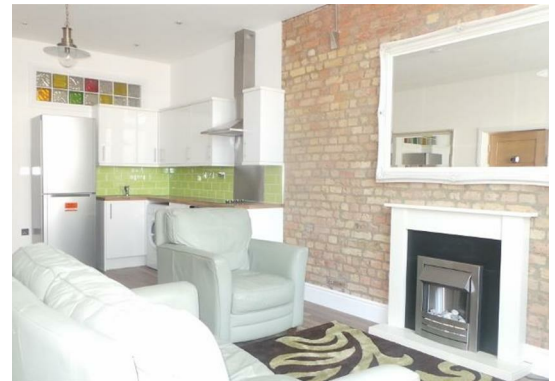
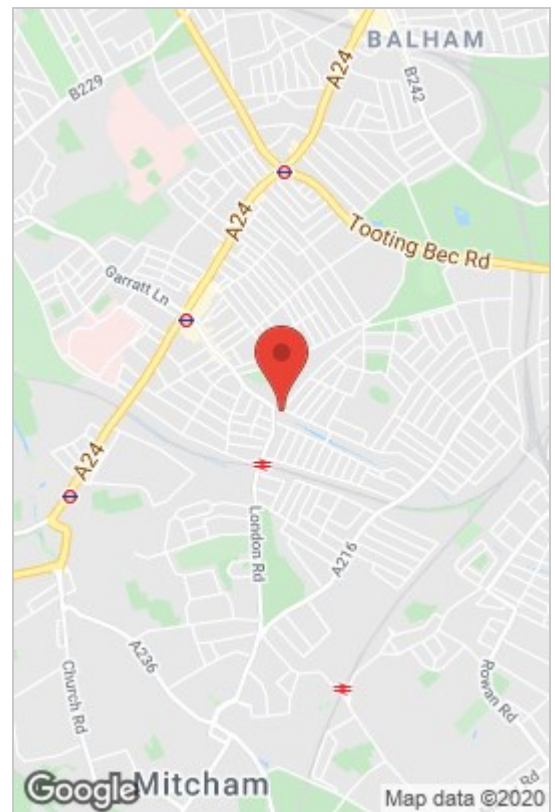




**Amen Corner, Tooting, SW17 9JE**

**Asking Price £360,000**





A fabulous spacious ground floor one bedroom flat, which has been refurbished to an exceptionally high standard throughout. This property comprises of a spacious open plan kitchen / living room area with a double bedroom and en-suite bathroom with floor to ceiling ceramic tiles this flat really does stand out. Benefits from double glazed windows, minutes walk to all local buses, Tooting Station & Tooting Broadway underground and all shops and amenities

Energy Efficiency Rating			Environmental Impact (CO <sub>2</sub> ) Rating		
	Current	Potential		Current	Potential
Very energy efficient - lower running costs			Very environmentally friendly - lower CO <sub>2</sub> emissions		
(92 plus) <b>A</b>			(92 plus) <b>A</b>		
(81-91) <b>B</b>			(81-91) <b>B</b>		
(69-80) <b>C</b>			(69-80) <b>C</b>		
(55-68) <b>D</b>			(55-68) <b>D</b>		
(39-54) <b>E</b>			(39-54) <b>E</b>		
(21-38) <b>F</b>			(21-38) <b>F</b>		
(1-20) <b>G</b>			(1-20) <b>G</b>		
Not energy efficient - higher running costs			Not environmentally friendly - higher CO <sub>2</sub> emissions		
England & Wales	EU Directive 2002/91/EC		England & Wales	EU Directive 2002/91/EC	

These particulars, whilst believed to be accurate are set out as a general outline only for guidance and do not constitute any part of an offer or contract. Intending purchasers should not rely on them as statements of representation of fact, but must satisfy themselves by inspection or otherwise as to their accuracy. No person in this firm's employment has the authority to make or give any representation or warranty in respect of the property.

**208 Mitcham Road, Amen Corner, Tooting, London, SW17 9NN**  
**Tel: 020 8672 1066 | Email: [info@mercertyaylor.co.uk](mailto:info@mercertyaylor.co.uk)**  
**[www.mercertyaylor.co.uk](http://www.mercertyaylor.co.uk)**