



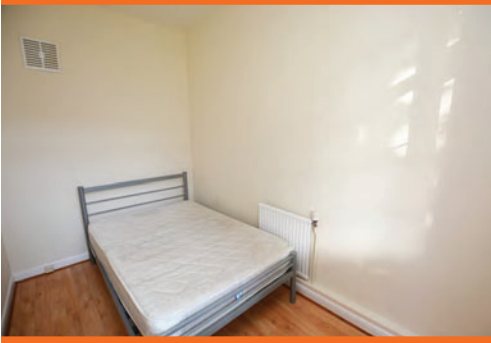
Sheaveshill Court | The Hyde | Colindale | NW9 6SJ

For Sale by Online Auction, Starting Bids £185,000 Terms and Conditions Apply.
Purpose built one bedroom ground flat with living room, bedroom, separate fully fitted kitchen and shower room. Gas central heating and double glazed.

Unallocated parking. Currently let on an AST (Assured Shorthold Tenancy) until 21st February 2021 at a rent of £1050pcm. Situated close to shops, amenities and restaurants and station.

Auction Guide Price

- One Bedroom Flat
- Ground Floor
- Purpose Built
- 11'4 X 11'2 Reception Room
- Separate Fitted Kitchen
- 11'6 X 6'6 Bedroom
- Fully Tiled Shower Room
- Unallocated Parking
- On AST until 21st Feb 2021 @ £1050 pcm



Purpose built one bedroom ground flat benefitting from a 11'4 x 11'2 living room with laminate flooring, leading to a 11'6 x 6'6 bedroom. Separate fitted 10'9 x 6'6 fully fitted kitchen with gas cooker and washing machine. Fully tiled shower room.

Gas central heating and double glazed.

442 sq ft

Unallocated parking.

Situated close to shops, amenities and restaurants and approximately 0.7 mile from Colindale's Central Line tube station.

Ex Local Authority.

Currently let on an Assured Shorthold Tenancy (AST) 21st February 2021 at a rent of £1,050 per month

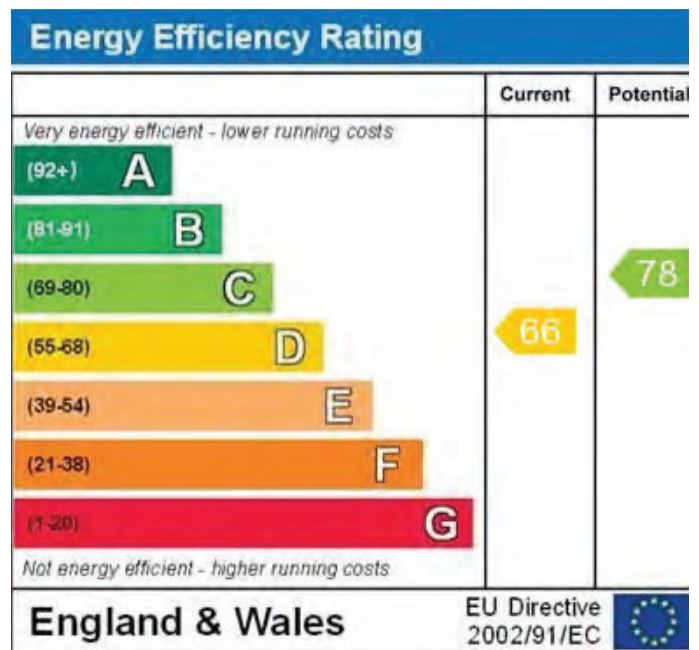
Leasehold

Lease 87 years (as advised)

Service Charge £515.00 per annum

Ground Rent £10.00 per annum

Council Tax Band B £1,202 per annum



WWW.EPC4U.COM