



Black and White
CLEARLY A BETTER SERVICE

50 BRICKHILL DRIVE, BIRMINGHAM, B37 5BZ
GUIDE PRICE £145,000





50 Brickhill

- 3 Bedrooms
- 1 bathroom
- Conservatory
- Kitchen/Diner

This three-bedroom property is situated in the heart of Chelmsley Wood inside a great location. Close to schools, shops and transport links making this a fantastic opportunity for investors. With a spacious living room, large kitchen, and conservatory this property has lots of potential.



Ground Floor

Porch

UPVC opaque double glazed window to side, fitted carpet, uPVC double glazed opaque sliding entrance door to:

Kitchen/Diner 5.20m (17'1") x 2.72m (8'11")

Base and eye level units fitted with a units and cupboards, 1+1/2 bowl sink, uPVC double glazed window to front, tiled flooring, wood, brick and tiled wall effect.



Living Room 5.20m (17'1") x 3.88m (12'9")
Wood effect laminate floor, fireplace, two double doors to:

Conservatory

Two windows to side, tiled flooring, two sliding doors.

First Floor

Landing

Fitted carpet, doors to:

Bedroom 1 3.81m (12'6") x 3.32m (10'11") plus
0.24m (0'10") x 0.24m (0'10")

UPVC double glazed window to rear, laminate
flooring, walk-in wardrobe.

Bedroom 2 2.94m (9'8") x 2.65m (8'8") plus 0.26m
(0'10") x 0.26m (0'10")

UPVC double glazed window to front, laminate
flooring.

Bedroom 3 3.01m (9'10") x 2.16m (7'1")

UPVC double glazed window to rear, laminate
flooring.

Bathroom

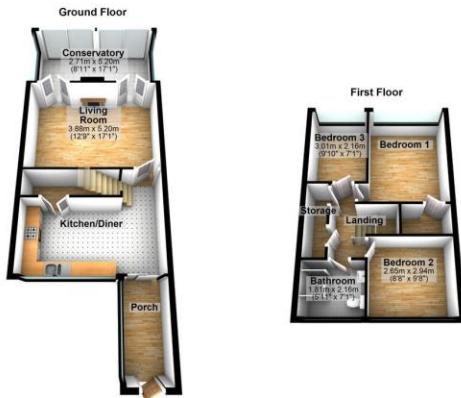
UPVC opaque double glazed window to front, vinyl
flooring, full height tiled wall.

Storage

Garden

Easily maintainable patio garden to rear.





%epcGraph_c_1_304%