



# Vicars Moor Lane, London

Offers Over £1,100,000



the advantage of experience



- Fantastic location
- Rear extension
- Stunning master suite
- Sheltered BBQ and bar area
- 5 mins walk to Winchmore Hill station
- Near to Outstanding rated schools
- Over 1900sqft



For more images of this property please visit [havilands.co.uk](http://havilands.co.uk)



An impressive bay-fronted 1920's built semi-detached four bedroom property located upon one of Winchmore Hill's premier roads.

Immaculate, heavily extended family home, with large kitchen with separate diner, spacious utility room, large south-facing garden and ample off street parking. This home benefits from a combination of period features and modern fittings throughout. First floor features two large bedrooms and 1 smaller with a luxury family bathroom. Followed by a fantastic master suite with en-suite.

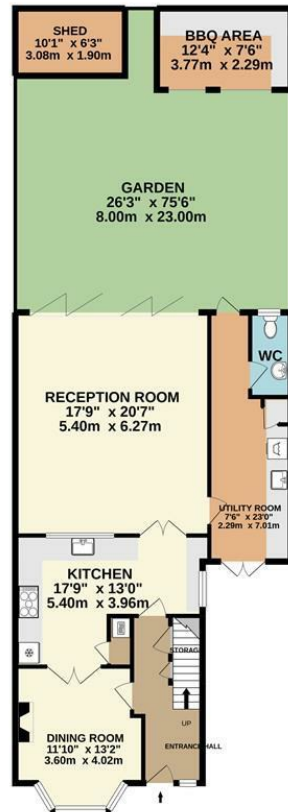
In the private rear garden there is a sheltered BBQ and bar area - perfect for outdoor socializing.

Situated 5 mins walk to Winchmore Hill station (30 mins Moorgate) and The Green with its cafes, bars and restaurants and Sunday Farmer's Market. The house is only 0.3 miles from St Paul's C of E School and benefits from being within the borough of Enfield - the greenest borough in London.

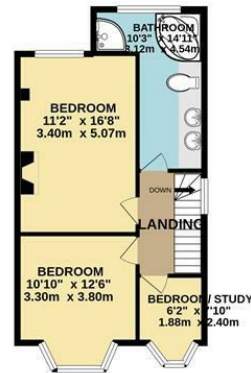
Viewing highly recommended.

For more images of this property please visit [havalands.co.uk](http://havalands.co.uk)

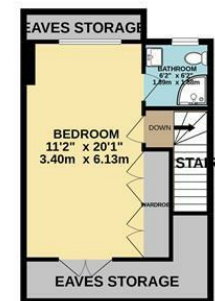
GROUND FLOOR  
948 sq.ft. (88.1 sq.m.) approx.



1ST FLOOR  
515 sq.ft. (47.8 sq.m.) approx.



2ND FLOOR  
441 sq.ft. (41.0 sq.m.) approx.



VICARS MOOR LANE, WINCHMORE HILL, N21 1BL  
TOTAL FLOOR AREA: 1904 sq.ft. (176.9 sq.m.) approx.  
Made with Metrepx ©2020



havilands | 020 8886 6262  
come by and meet the team  
30 The Green, Winchmore Hill, London, N21 1AY

**Havilands**  
the advantage of experience