



Eversley Park Road, London

£400,000

Havilands

the advantage of experience



- Spacious reception
- Two double bedrooms
- separate W.C
- 900+ Lease
- Double glazed windows
- Utility Cupboard.
- Chain free
- Parking to the rear
- Early viewing advised
- Share of freehold

For more images of this property please visit havilands.co.uk



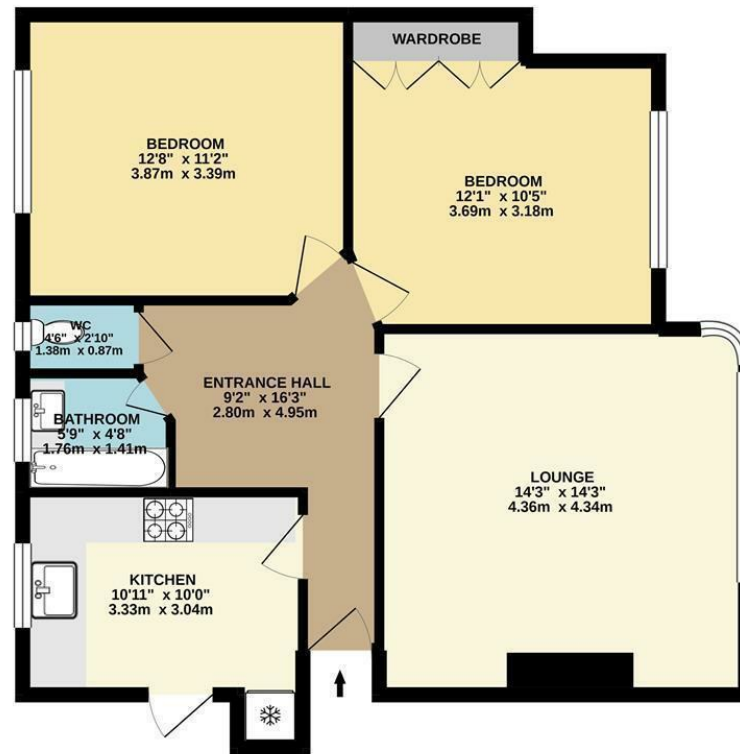
Havilands are please to offer to market this delightful and well presented Two Double Bedroom second floor apartment situated within a popular 'Art Deco' mansion building is offered for sale. The property consist of it offers a gorgeous reception, fabulous fitted kitchen, separate bathroom and WC and off-street parking.



The property is located just off Eversley Park Road and is within walking distance of both Winchmore Hill and Southgate, with their stations, restaurants, bars and shops.

For more images of this property please visit havilands.co.uk

2ND FLOOR
690 sq.ft. (64.1 sq.m.) approx.



SEYMOUR COURT, EVERSLEY PARK ROAD, N21 1JQ
TOTAL FLOOR AREA : 690 sq.ft. (64.1 sq.m.) approx.
Made with Metropix ©2020



havalands | 020 8886 6262
come by and meet the team
30 The Green, Winchmore Hill, London, N21 1AY

Havalands
the advantage of experience