

Buttermere Road, Stourport-On-Severn, DY13 8NY

Guide price £299,950

Why this home is chosen...

Located on the ever popular Burlish Park estate, this re-configured and updated three bedroom detached home really is one of a kind with extended and re-fitted kitchen and an en-suite to the main bedroom. The property lies within easy reach of local amenities and is close to the local schools.

A quick tour

Highlights of this property include:

- Extended & re-fitted kitchen/diner
- 'L' shape sitting room/dining room
- Main bedroom with en-suite & two further double bedrooms
- Re-fitted bathroom
- Generous rear garden with shed
- Garage
- Did we mention the local amenities and schools?



Welcome to wonderful homes.

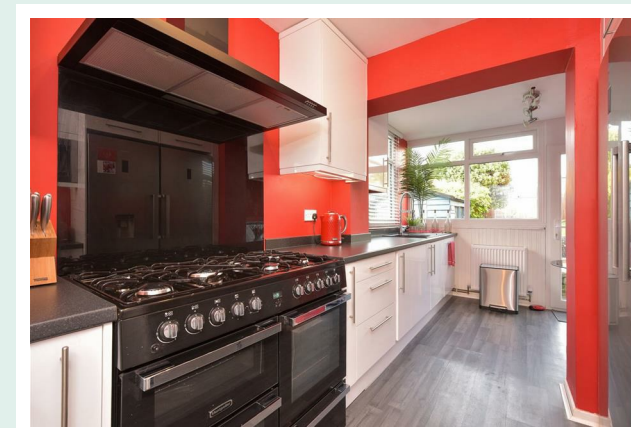
08000 886 996 | team@chosenhome.com | chosenhome.com

chosen

**Buttermere
Road,**
Stourport-On-Severn,
DY13 8NY

Guide price £299,950

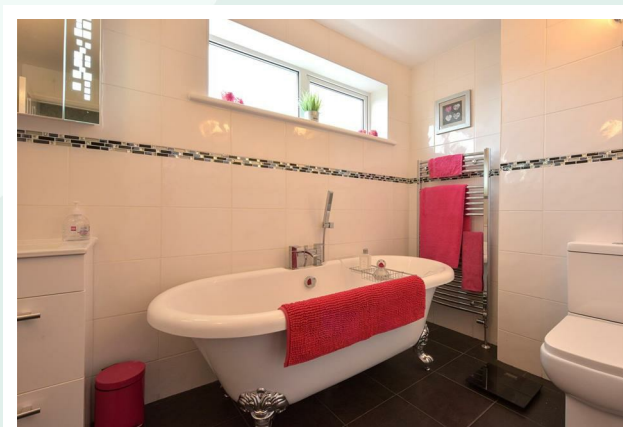
Come on in...



Kitchen



Main Bedroom



Bathroom



Garden

VIEWING

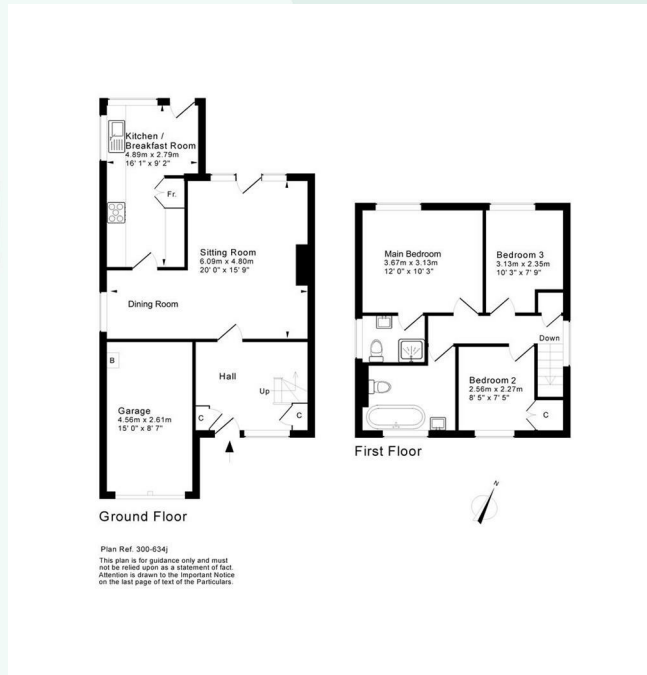
To view this property or for more information please contact the office on 08000 886 996 or email on team@chosenhome.com

Welcome to wonderful homes.

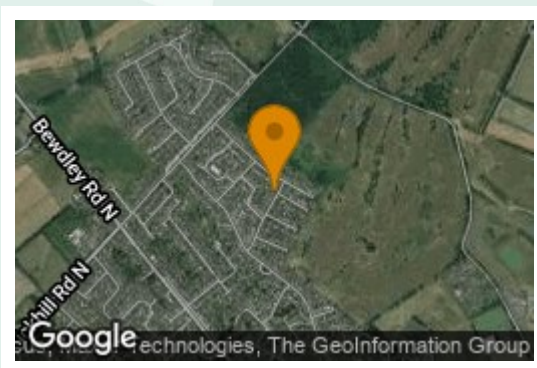
08000 886 996 | team@chosenhome.com | chosenhome.com

chosen

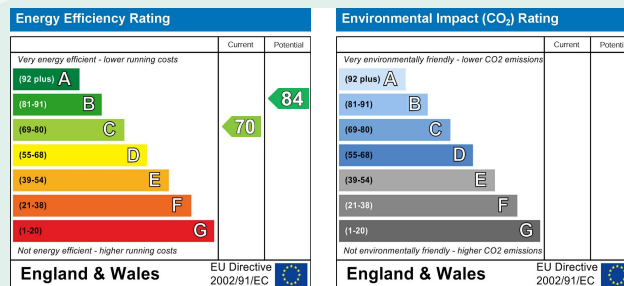
FLOOR PLAN



HYBRID MAP



ENERGY EFFICIENCY



DISCLAIMER

Chosen Home Limited charge a purchase fee of 1% plus VAT of the selling price which is payable by the purchaser on completion of the sale and is to be a condition of sale in the contract. It is for the sellers lawyers to collect this fee with the purchase price on completion. The estate agents costs must be sent to the estate agents by telegraphic transfer by the sellers solicitors prior to keys being released.

Welcome to wonderful homes.

08000 886 996 | team@chosenhome.com | chosenhome.com

chosen