



Chaseley Street , Limehouse, E14

£1,650 pcm

Available 11th February, 2022. Charming and modern two bed apartment situated in Limehouse. Spacious reception, with balcony and private courtyard ideal for BBQ's. Excellently located for Canary Wharf, the City and a 2 mins stroll from Limehouse DLR. A Must-See apartment offering great value-for-money.

- Charming two bedroom apartment
- Spacious reception
- Balcony and private courtyard



RECEPTION ROOM

13' 11" x 13' 8" (4.24m x 4.17m) Laminated flooring, gas radiator and double glazed views.

KITCHEN

11' 6" x 7' 7" (3.51m x 2.31m) Vinyl floor, fitted kitchen cupboards, granite look, stainless steel sink, gas radiator, fridge freezer, washing machine and dishwasher.

BEDROOM ONE

14' 2" x 11' 6" (4.32m x 3.51m) Laminated flooring, gas radiator, double glazed views windows and built-in wardrobe.

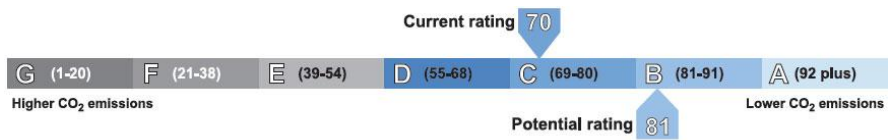
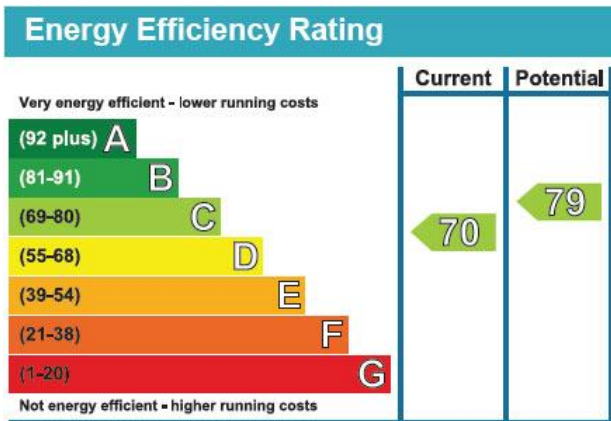
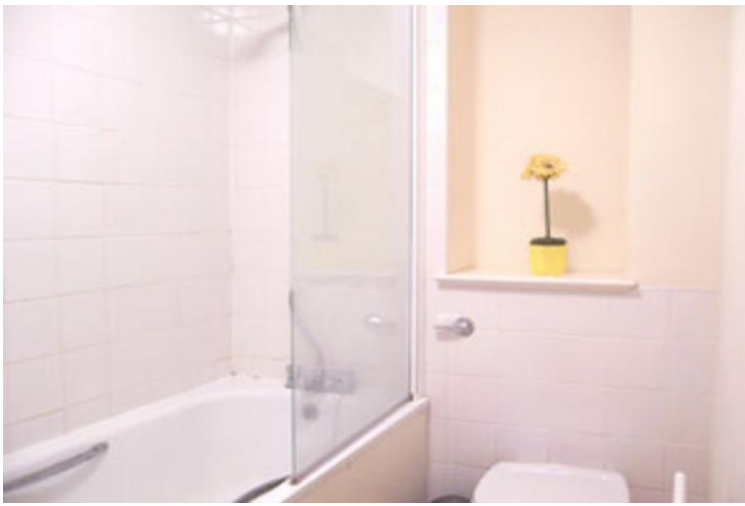
BEDROOM TWO

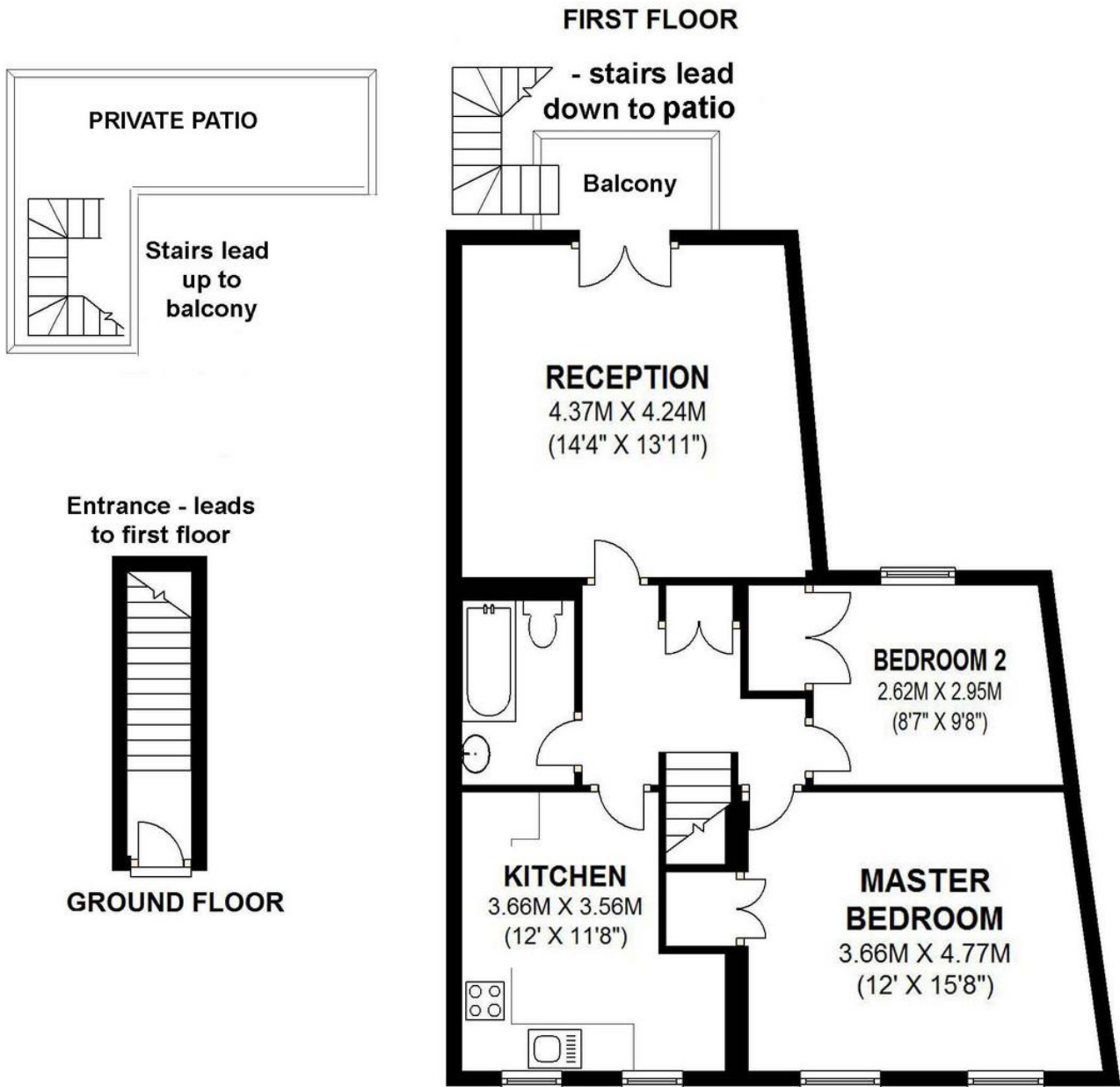
8' 1" x 9' 7" (2.46m x 2.92m) Laminated flooring, gas radiator and double glazed views.

BATHROOM

4' 4" x 7' 4" (1.32m x 2.24m) Vinyl floor, gas radiator, bath, shower, toilet, wall mirror, washbasin, and gas heated towel rack.

Others: Hallway built in wardrobes





APPROX. 70.9 SQ. METRES (763.7 SQ. FEET)

CHASELEY STREET

655 Commercial Road, London, E14 7LW

Disclaimer
River Habitat, their clients and any joint agents give notice that: 1. They have no authority to make or give any representations or warranties in relation to the property. These particulars do not form any part of an offer or contract and must not be relied upon as statements or representations of fact. 2. Any areas, measurements or distances are approximate. The text, photographs and plans are for guidance only and are not necessarily a complete representation of the property. Photographs are taken using a wide angle lens camera. 3. It should not be assumed that the property has all necessary planning, building regulations or other consents and River Habitat have not tested any services, equipment or other facilities. Purchasers must satisfy themselves by inspection or otherwise