



942 sq
ft



3



1



1

REDBRIK
ESTATE AGENTS



Helping you find
your home at...

Welbeck Drive, Wingerworth, Chesterfield

Guide Price £240,000 to £250,000

Guide Price £240,000-£250,000. Positioned on a quiet road in the sought after suburb of Wingerworth is this well maintained, deceptively spacious three bedroom detached bungalow.

- Three Bedroom Detached Bungalow
- Fitted Breakfast Kitchen With Integrated Appliances
- Fantastic Open Plan Living Space
- No Onward Chain
- Fitted Bathroom With Separate Shower
- South Facing Enclosed Rear Garden With Lawn & Patio
- Off-Street Parking For Numerous Cars & Garage/workshop
- Sought After Location
- GCH & uPVC Double Glazing
- Energy Rating TBC - Freehold.





This is for our family...

The property offers versatile accommodation with further scope to modernise to your own requirements

The private South facing enclosed garden is excellent for both kids to play and adults to entertain in

The property provides ample off road parking and garage/workshop
Renowned schools, shops, amenities and numerous parks are a short distance away

Buying just for me, or with my partner...

The third bedroom could double as a dressing room or office to suit
You'll love the styling; it is so versatile; you could make the property feel ultra-modern or quite traditional to suit your tastes

Ideally placed for transport links including various commuter routes
Pubs, shops & takeaways are all in close proximity



This could be an ideal property to downsize...

The location is beautiful, and there are loads of fabulous walks close by including Walton woods

The property has been set-up to be relatively low-maintenance with the bonus of being able to put your own stamp on it

The accommodation is very flexible, offering spaces that can be utilised for a number of purposes

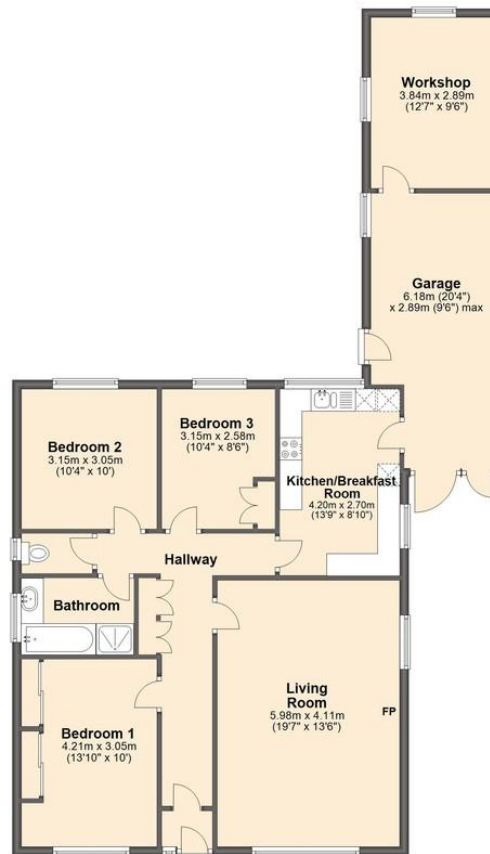
I am looking for investment...

We think the rental yield will be approximately

Tenants would love the quiet location, neutral decoration, garden & access to amenities



Ground Floor
Approx. 87.5 sq. metres (942.2 sq. feet)



Total area: approx. 87.5 sq. metres (942.2 sq. feet)

We endeavour to make these particulars as accurate as possible, but they should only be used as guidance and they do not constitute any part of the contract. All measurements are approximate and no guarantees are made to the services, heating systems, appliances (if any) or fittings as to their working order and no warranty can be given or implied.

You may download, store and use this material for your own personal use and research. You may not republish, retransmit, redistribute or otherwise make the material available to any party or make the same available on any website, on or offline service or hard copy without the website owner's express written consent. The website owner's copy right must remain on all reproductions of material taken from this website.