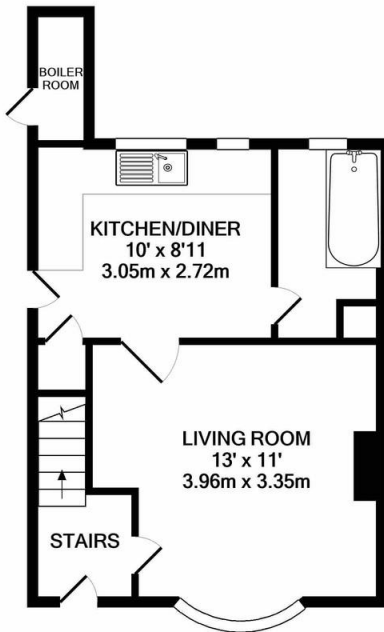
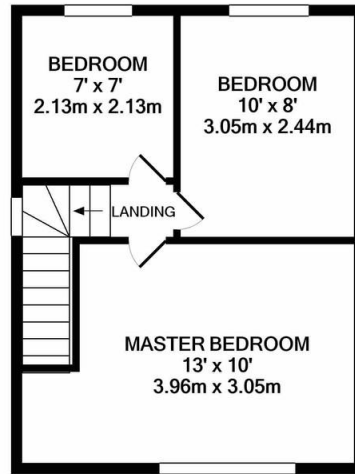


Property Summary

A neatly presented three bedroom semi detached set in the increasingly sought after location of Wigston. The accommodation comprises entrance hall, lounge, kitchen, downstairs bathroom, landing to three bedrooms, off road parking, south facing rear garden. For more information or to view call Phillips George on 01162168178.



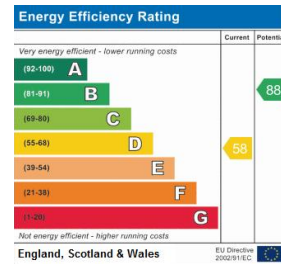
GROUND FLOOR
APPROX. FLOOR
AREA 327 SQ.FT.
(30.4 SQ.M.)



1ST FLOOR
APPROX. FLOOR
AREA 307 SQ.FT.
(28.5 SQ.M.)

PHILLIPS GEORGE LTD
TOTAL APPROX. FLOOR AREA 634 SQ.FT. (58.9 SQ.M.)

Whilst every attempt has been made to ensure the accuracy of the floor plan contained here, measurements of doors, windows, rooms and any other items are approximate and no responsibility is taken for any error, omission, or mis-statement. This plan is for illustrative purposes only and should be used as such by any prospective purchaser. The services, systems and appliances shown have not been tested and no guarantee as to their operability or efficiency can be given
Made with Metropix ©2020



Address:
Kingston Avenue, Wigston
Reference:
PG1

- Semi Detached
- Three Bedrooms
- Highly Popular Location
- Ground Floor Bathroom
- South Facing Large Rear Garden
- Off Road Parking
- Fitted Kitchen
- Large Rear Shed

phillips george | sales & lettings

Agents Note: Whilst every care has been taken to prepare these sales particulars, they are for guidance purposes only. All measurements are approximate and for general guidance purposes only and whilst every care has been taken to ensure their accuracy, they should not be relied upon and potential buyers are advised to recheck the measurements

🏠 46 Long Street, Wigston, Leicestershire, LE18 2AH

✉ info@phillipsgeorge.co.uk

☎ 0116 216 8178

