

40 Gleave Road Birmingham, B29 6JR

**** AVAILABLE 1ST JULY ****
£70 pppw excluding bills

Lovely 4 bedroom property with an open plan kitchen/lounge, with laminate flooring, new appliances including a dishwasher, washing machine, tumble dryer and fridge freezer, as well as a 32" flat screen TV. Also benefitting from an upstairs bathroom with a double power shower. The large rear garden has a BBQ and picnic table/bench and safe bike storage. The property is also alarmed.
EPC Rating E

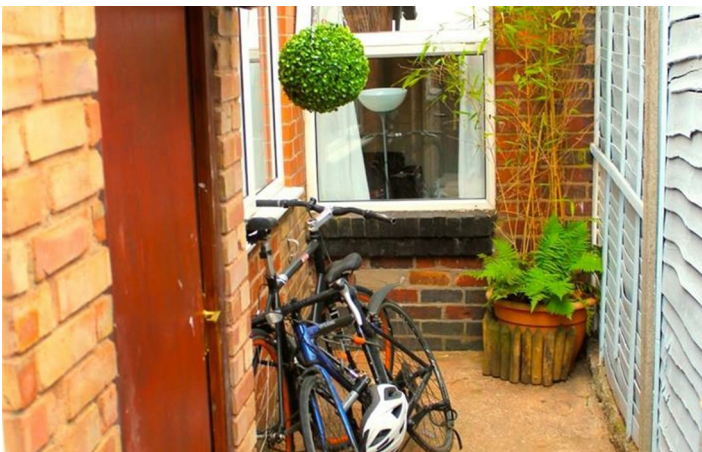
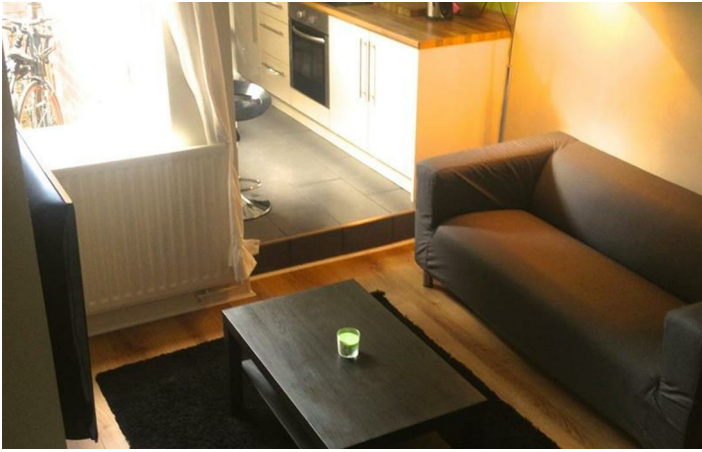
£280 Per Week

40 Gleave Road

Birmingham, B29 6JR

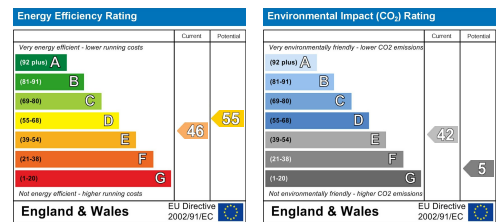


[Directions](#)



Floor Plan

These particulars, whilst believed to be accurate are set out as a general outline only for guidance and do not constitute any part of an offer or contract. Intending purchasers should not rely on them as statements of representation of fact, but must satisfy themselves by inspection or otherwise as to their accuracy. No person in this firm's employment has the authority to make or give any representation or warranty in respect of the property.



543 Bristol Road, Selly Oak, Birmingham B29 6AU. T: 0121 472 3331 Website: www.direct-housing.co.uk
E-mail: sellyoak@direct-housing.co.uk lettings@direct-housing.co.uk accounts@direct-housing.co.uk

