



Heathfield Gardens, London, W4 4JU

Guide Price £1,750,000

WHITMAN & CO.

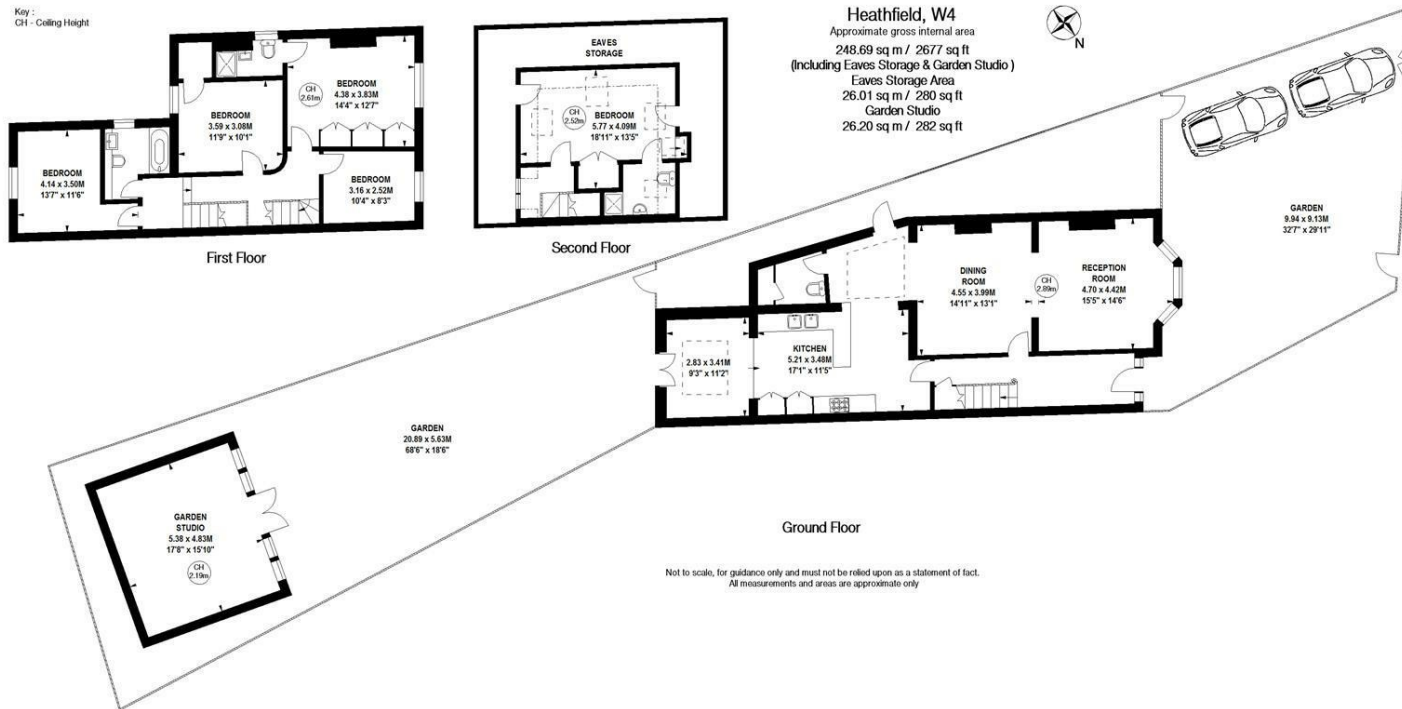
SALES · LETTINGS · COMMERCIAL

- Semi-detached period family home
- 70' garden with large studio
- Off street parking for 2 cars
- 2600sqft of accommodation
- 28' Double reception room
- No chain

Tenure - Freehold
Local Authority - Hounslow
Council Tax - Band G

THE PROPERTY

A spacious semi-detached period family home located on this tree-lined residential street running south off Turnham Green. Offering over 2600sqft of accommodation the property comprises a 28' double reception room, kitchen/dining room, cloakroom/utility, 70' private garden, 17'6x15'10 garden studio, master bedroom with ensuite shower room, loft bedroom with ensuite shower room, three further bedrooms, family bathroom, off-street parking for 2 cars, spacious side return area with potential for a garage (STPP) and eaves storage. The house is a short walk from Chiswick High Road's shops, cafes and restaurants and also close to the river and Chiswick House and Grounds. Transport links include Chiswick Park and Gunnersbury stations, local bus routes and the A4/M4 for routes in and out of London. No chain.



SITUATION



5-7 Turnham Green Terrace, Chiswick, London, W4 1RG

Tel 020 8747 8300

E-mail sales@whitmanandco.com

Website www.whitmanandco.com



MISREPRESENTATION ACT 1967

Whitman & Co. for themselves and for the vendors give notice that these particulars do not constitute any part of, an offer of contract. All statements contained in these particulars are made without responsibility on the part of Whitman & Co. or the vendor. None of the statements contained in these particulars is to be relied upon as statements or representations of facts. Any intending purchaser must satisfy himself by inspection or otherwise as to the correctness of each of the statements contained in these particulars. The vendor does not make or give, and neither Whitman & Co. or any person in their employment has any authority to make or give, any representation or warranty whatever in relation to the property.