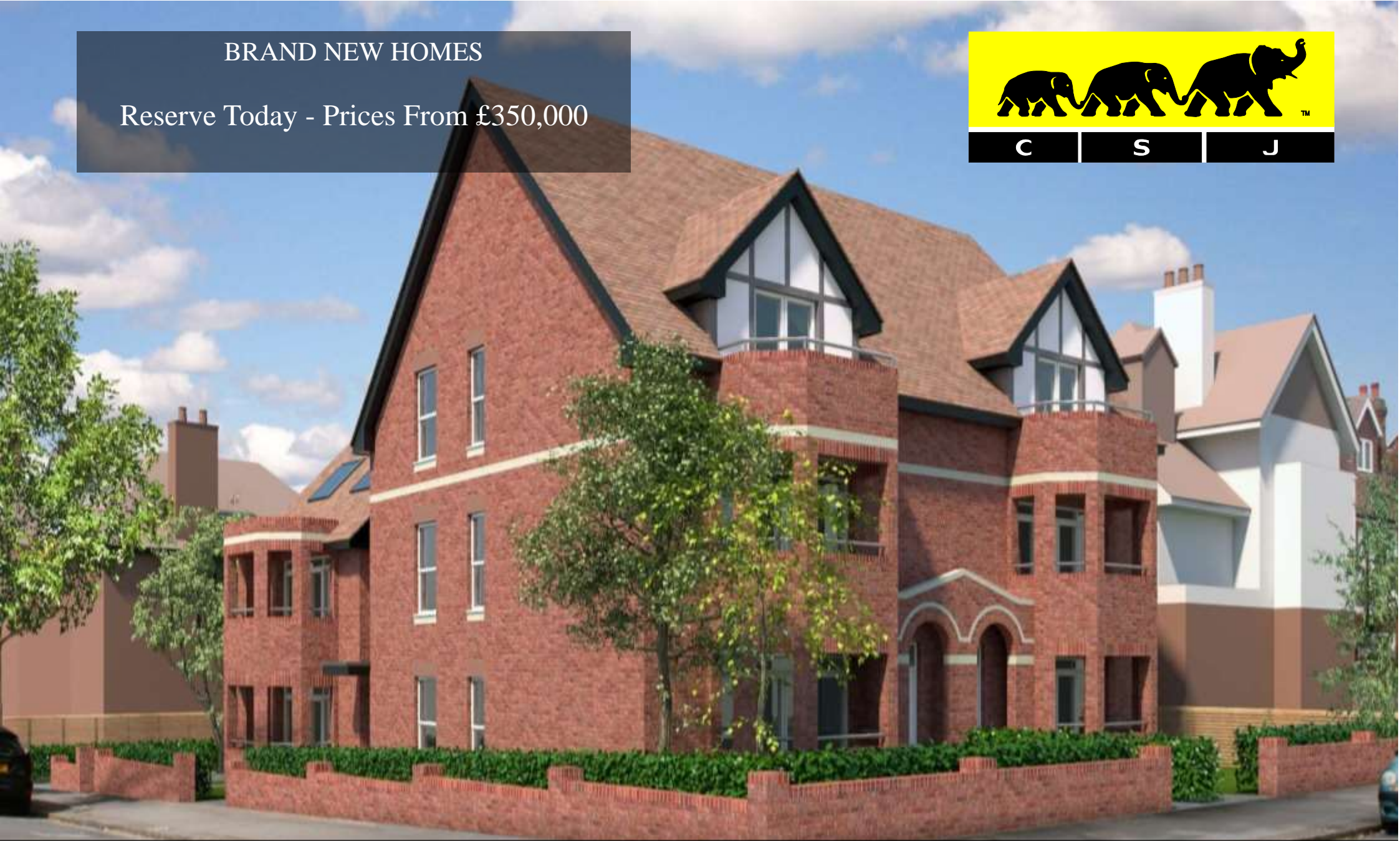
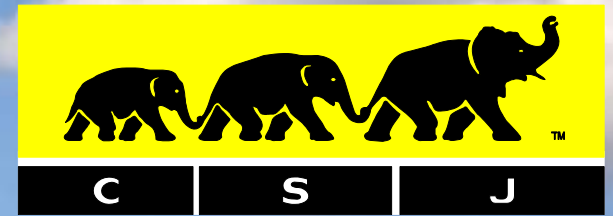


BRAND NEW HOMES

Reserve Today - Prices From £350,000



CGI OF PROPOSED SCHEME

Chatsworth Road, Croydon, Surrey CR8 1HF

A brand new development of 9 stylish apartments comprising 1, 2 & 3 bedrooms located on a residential road at the edge of the Town Centre
just a few minutes from East Croydon Station - Buyer incentives available

Chatsworth Road, Croydon CR0 1HF

Brand-new development of 9 apartments
finished to a high specification

Lease: 125 years
Service Charge £500 per annum
Ground Rent: TBC

Please note 1 unit is available with an off street parking space and 2 other units will be able to apply for parking permits as this is predominantly a car free development

The property is now available to reserve
Buyer incentives available.
Call 020 8296 1270

(images used are from the show home)

Specification as supplied by the Developers

- Sleek white kitchens
- Quartz stone worktops
- Integrated Samsung & Bosch appliances + wine cooler
- Luxury vinyl flooring (reception rooms and hallways)
- Carpeted bedrooms & stairs
- Cool white Carrara bathroom with Jacuzzi & led lighting
- Gardens / balconies & communal gardens

Disclaimer: CSJ, our clients and any joint agents give notice that:
1) They have no authority to make or give any representations or warranties in relation to the property. These particulars do not form part of any offer or contract and must not be relied upon as statements or representations of fact. 2) Any areas, measurements or distances are approximate. The text, photographs and plans are for guidance only and not necessarily comprehensive. It should not be assumed that the property has all necessary planning, building, regulation or other consents and CSJ have not tested any services, equipment or facilities. Purchasers must satisfy themselves by inspection or otherwise.



📞 020 8296 1270

@ newhomes@csj.eu.com

🌐 www.csj.eu.com

🏠 61 High Street, Colliers Wood, London, SW19 2JF

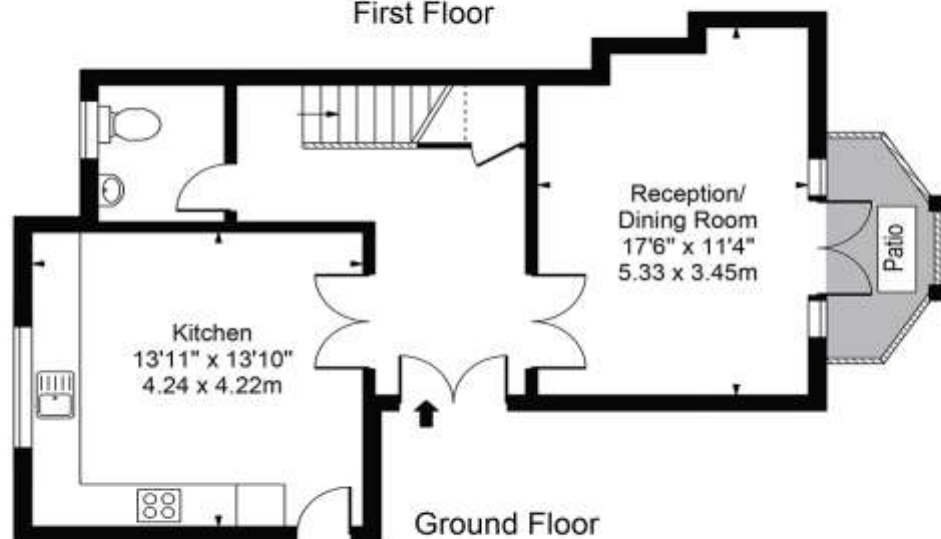
Flat 1

Chatsworth Road,
Croydon, CR0

Approx. Gross Internal Area 1175 Sq Ft - 109.16 Sq M



First Floor



Ground Floor

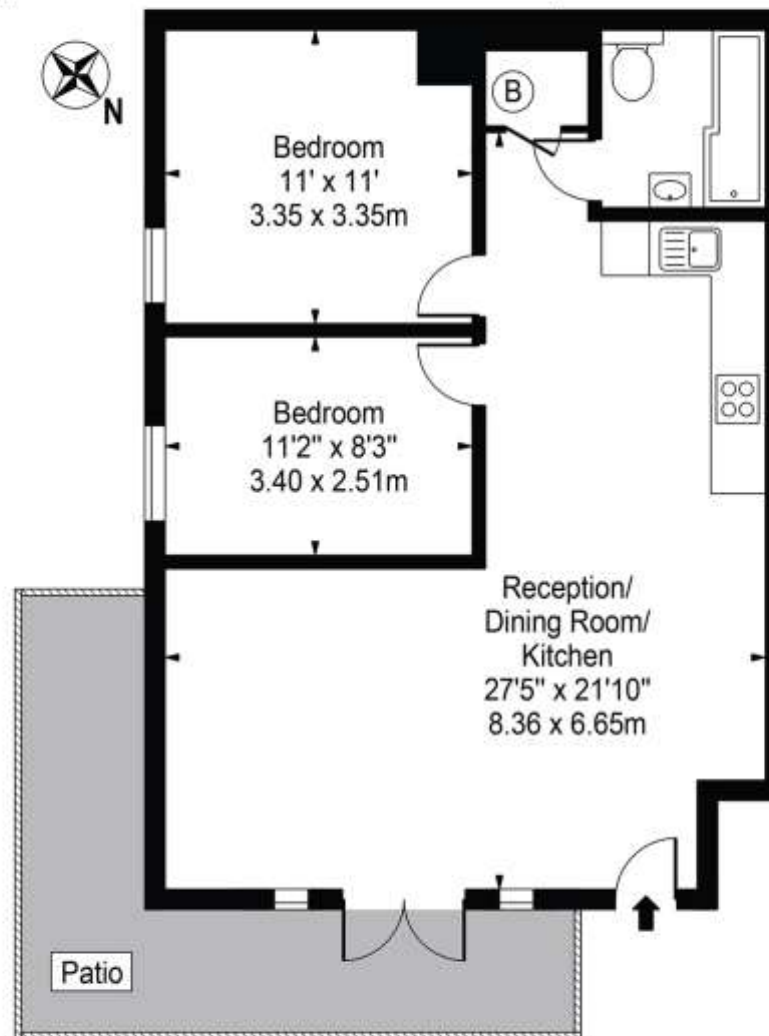
For Illustration Purposes Only - Not To Scale - Floor Plan by interDesign Photography
www.interdesignphotography.com

This floor plan should be used as general outline for guidance only.
All measurements are approximate and for illustration purposes only as defined by the RICS Code of Measuring Practice ©2016.

Flat 2

Chatsworth Road,
Croydon, CR0

Approx. Gross Internal Area 675 Sq Ft - 62.71 Sq M



Ground Floor

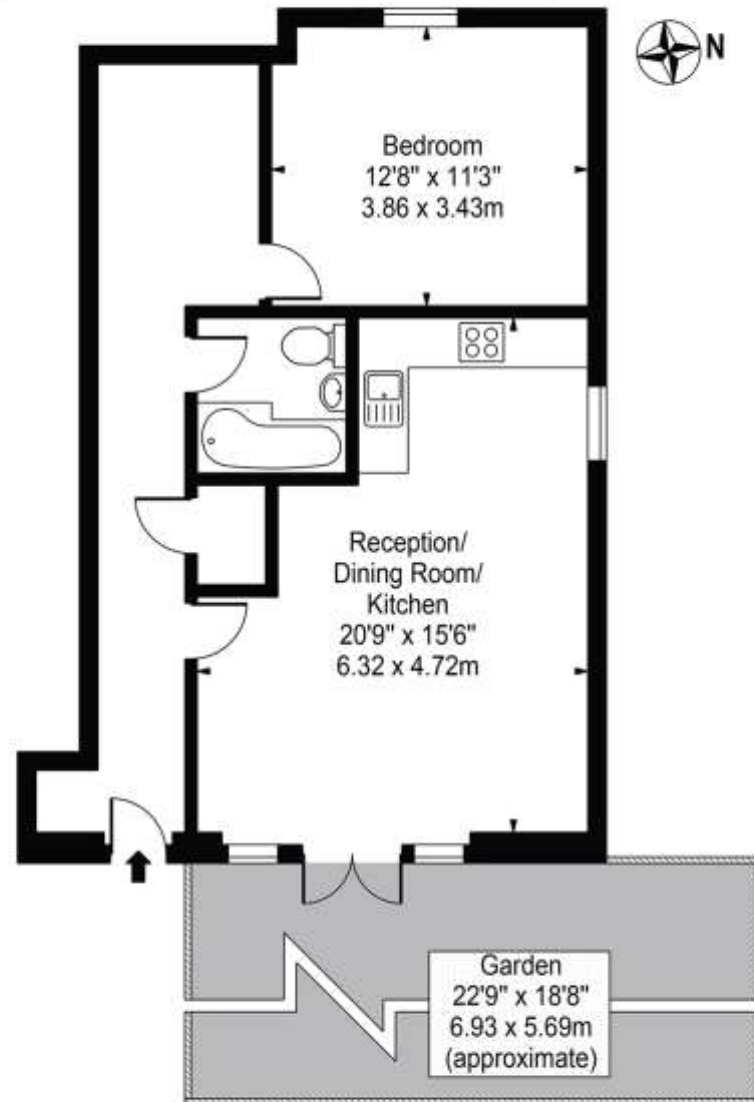
For Illustration Purposes Only - Not To Scale - Floor Plan by interDesign Photography
www.interdesignphotography.com

This floor plan should be used as general outline for guidance only.
All measurements are approximate and for illustration purposes only as defined by the RICS Code of Measuring Practice ©2016.

Flat 3

Chatsworth Road, CR0

Approx. Gross Internal Area 643 Sq Ft - 59.74 Sq M



Ground Floor

For Illustration Purposes Only - Not To Scale - Floor Plan by interDesign Photography
www.interdesignphotography.com

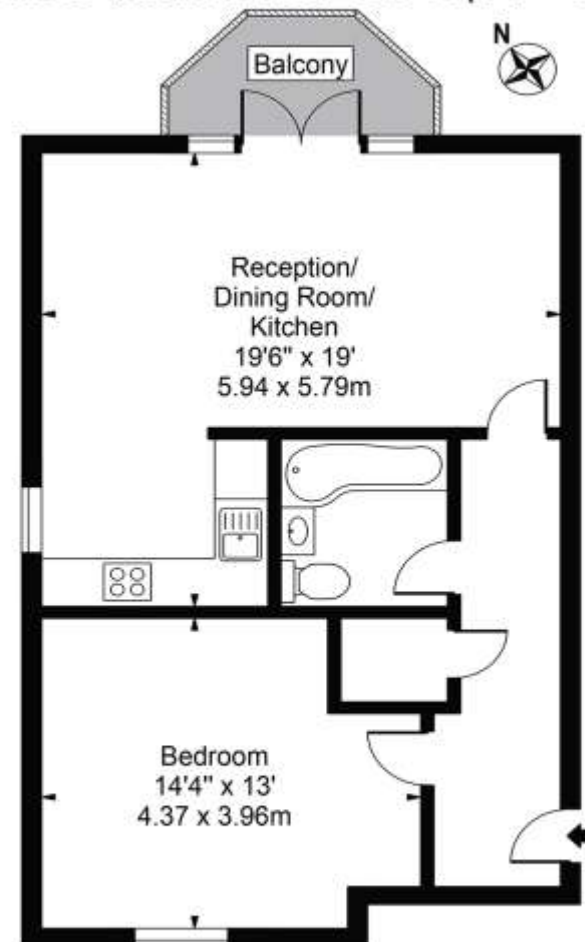
This floor plan should be used as general outline for guidance only.
All measurements are approximate and for illustration purposes only as defined by the RICS Code of Measuring Practice ©2016.



Flat 4

Chatsworth Road, CR0

Approx. Gross Internal Area 620 Sq Ft - 57.60 Sq M



First Floor

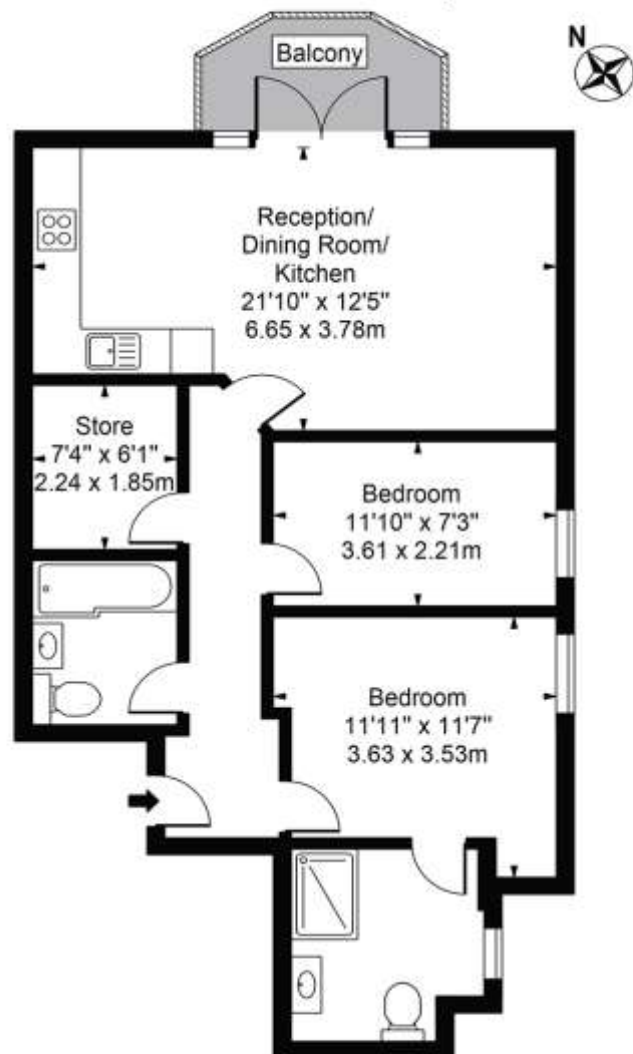
For Illustration Purposes Only - Not To Scale - Floor Plan by interDesign Photography
www.interdesignphotography.com

This floor plan should be used as general outline for guidance only.
All measurements are approximate and for illustration purposes only as defined by the RICS Code of Measuring Practice ©2016.

Flat 5

Chatsworth Road,
Croydon, CR0

Approx. Gross Internal Area 709 Sq Ft - 65.87 Sq M



First Floor

For Illustration Purposes Only - Not To Scale - Floor Plan by interDesign Photography
www.interdesignphotography.com

This floor plan should be used as general outline for guidance only.
All measurements are approximate and for illustration purposes only as defined by the RICS Code of Measuring Practice ©2016.

Flat 6

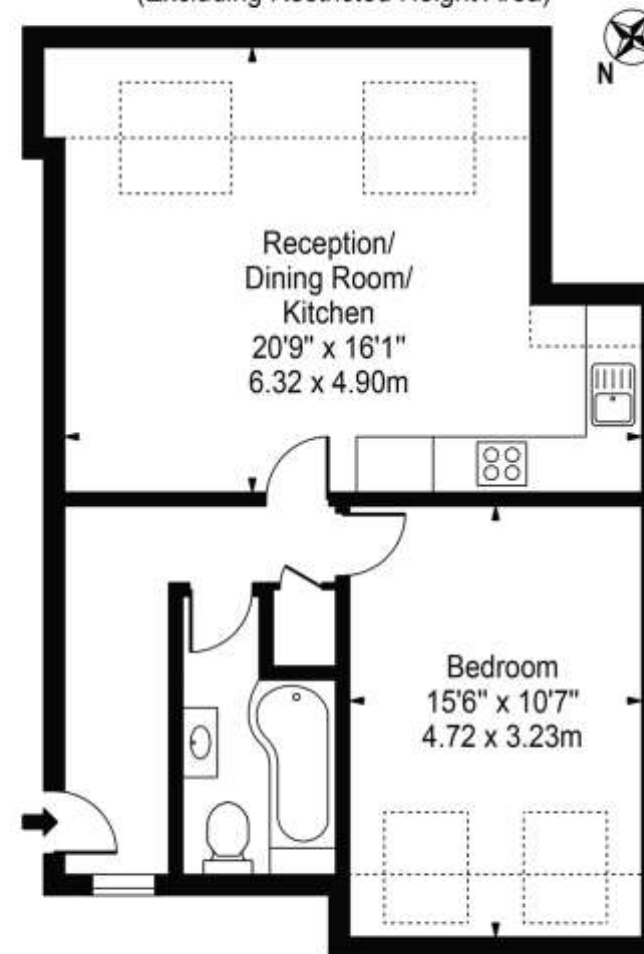
Chatsworth Road, CR0

Approx. Total Internal Area 606 Sq Ft - 56.30 Sq M

(Including Restricted Height Area)

Approx. Gross Internal Area 520 Sq Ft - 48.31 Sq M

(Excluding Restricted Height Area)



Second Floor

For Illustration Purposes Only - Not To Scale - Floor Plan by interDesign Photography
www.interdesignphotography.com

This floor plan should be used as general outline for guidance only.
All measurements are approximate and for illustration purposes only as defined by the RICS Code of Measuring Practice ©2016.

Flat 7

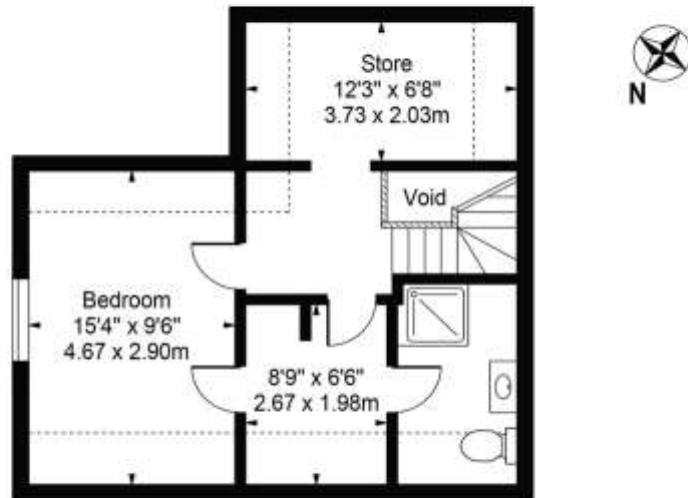
Chatsworth Road, CR0

Approx. Gross Internal Area 1171 Sq Ft - 108.79 Sq M

(Including Restricted Height Area & Excluding Void)

Approx. Gross Internal Area 1062 Sq Ft - 98.66 Sq M

(Excluding Restricted Height Area & Void)



Third Floor



Second Floor

For Illustration Purposes Only - Not To Scale - Floor Plan by interDesign Photography
www.interdesignphotography.com

This floor plan should be used as general outline for guidance only.
All measurements are approximate and for illustration purposes only as defined by the RICS Code of Measuring Practice ©2016.

Flat 8

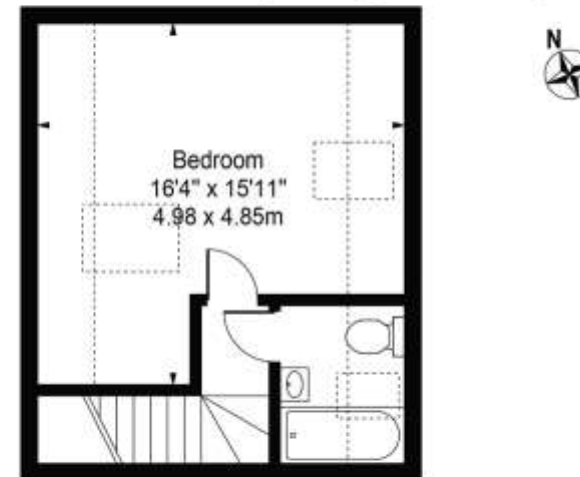
Chatsworth Road, CR0

Approx. Total Internal Area 936 Sq Ft - 86.96 Sq M

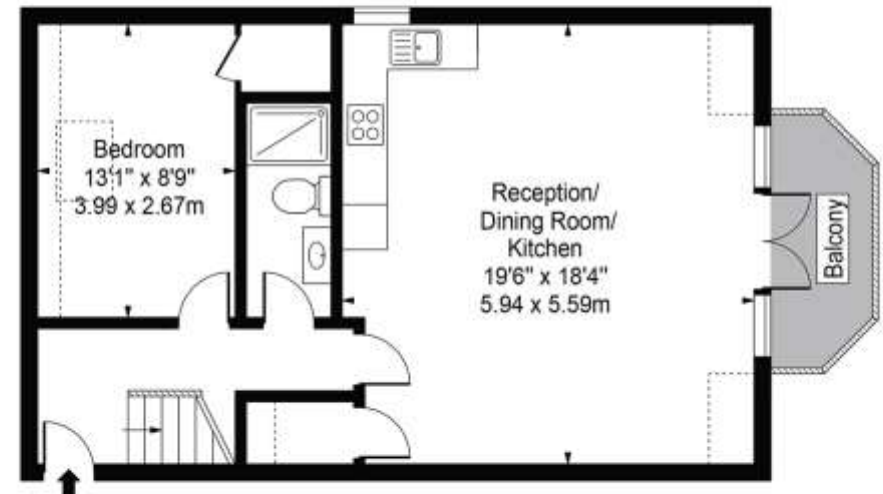
(Including Restricted Height Area)

Approx. Gross Internal Area 815 Sq Ft - 75.72 Sq M

(Excluding Restricted Height Area)



Third Floor



Second Floor

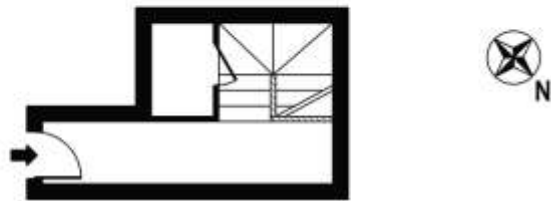
For Illustration Purposes Only - Not To Scale - Floor Plan by interDesign Photography
www.interdesignphotography.com

This floor plan should be used as general outline for guidance only.
All measurements are approximate and for illustration purposes only as defined by the RICS Code of Measuring Practice ©2016.

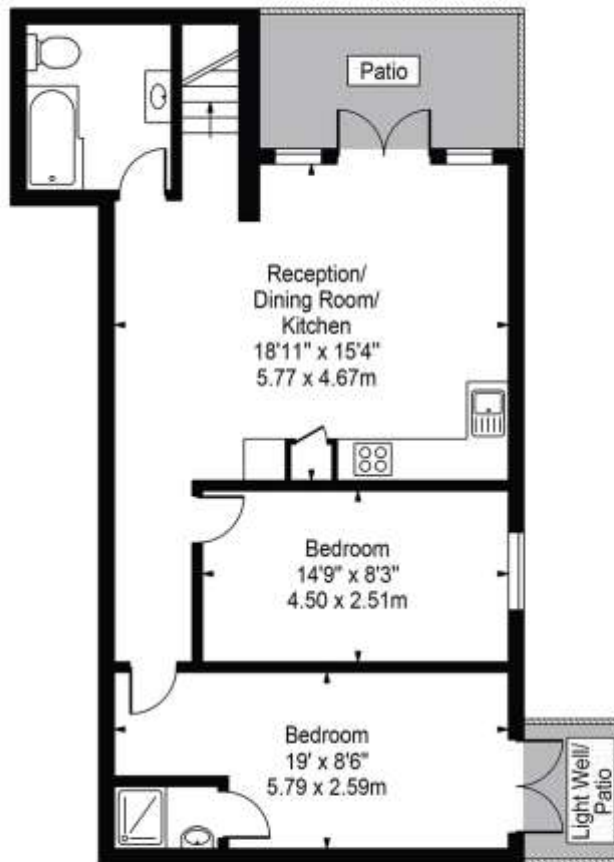
Flat 9

Chatsworth Road, CR0

Approx. Gross Internal Area 786 Sq Ft - 73.02 Sq M



Ground Floor



Lower Ground Floor

For Illustration Purposes Only - Not To Scale - Floor Plan by interDesign Photography
www.interdesignphotography.com

This floor plan should be used as general outline for guidance only.
All measurements are approximate and for illustration purposes only as defined by the RICS Code of Measuring Practice ©2016.

This development is due for completion at the end of
February 2021

Two show homes are available for viewing by
appointment only

Internal inspection of other units will be possible as
they nearer completion



020 8296 1270

newhomes@csj.eu.com

www.csj.eu.com

61 High Street, Colliers Wood, London, SW19 2JF

Disclaimer: CSJ, our clients and any joint agents give notice that:

1) They have no authority to make or give any representations or warranties in relation to the property. These particulars do not form part of any offer or contract and must not be relied upon as statements or representations of fact. 2) Any areas, measurements or distances are approximate. The text, photographs and plans are for guidance only and not necessarily comprehensive. It should not be assumed that the property has all necessary planning, building, regulation or other consents and CSJ have not tested any services, equipment or facilities. Purchasers must satisfy themselves by inspection or otherwise.