



MILES ESTATE AGENTS

**94 Apple Tree Close
Norton Fitzwarren Taunton TA2 6FF**



A superb detached modern house, significantly upgraded and enhanced by the current owners, with spacious 4 bedroom accommodation and fabulous kitchen/dining room, fully landscaped south facing garden, garage with electric door and off road parking. Early viewing recommended and no onward chain.





Features

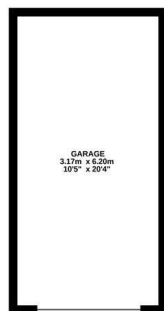
- Entrance Hall
- Good Size Living Room
- Superb Kitchen/Dining Room with Bifold Doors
- Study
- Downstairs Cloakroom
- Master Bedroom with En Suite Shower Room
- Three Further Bedrooms
- Family Bathroom
- Fully Enclosed Landscaped Rear Garden
- Garage and Off Road Parking
- Council Tax Band D



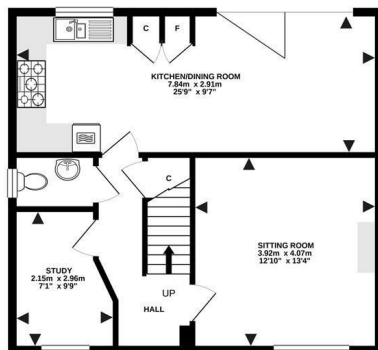




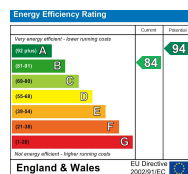
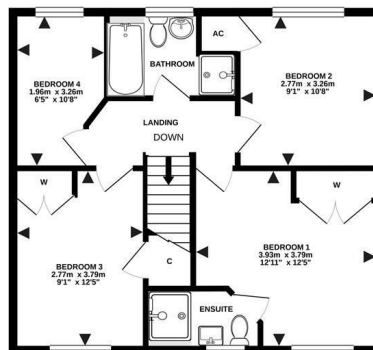
GARAGE
19.4 sq.m. (209 sq.ft.) approx.



GROUND FLOOR
53.8 sq.m. (580 sq.ft.) approx.



1ST FLOOR
54.0 sq.m. (583 sq.ft.) approx.



TOTAL FLOOR AREA : 127.2 sq.m. (1369 sq.ft.) approx.
Made with Metropix ©2021



Viewings strictly through the selling agents:

Miles Estate Agents

2 Piffin Lane, Bishops Lydeard, Taunton,
Somerset, TA4 3AS

Tel: 01823 470 500

lydeard@milesestateagents.co.uk

www.milesestateagents.co.uk



rightmove

Zoopla.co.uk

onTheMarket.com

MILES ESTATE AGENTS

