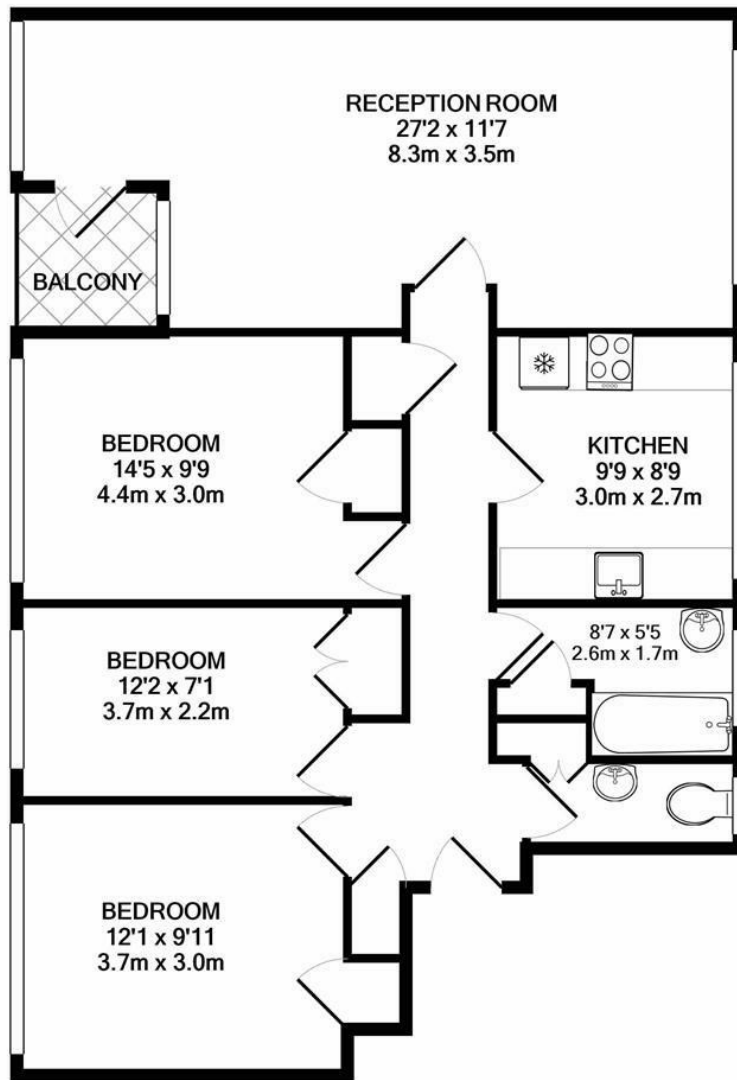


Summerwood Road  
Isleworth  
TW7 7QY

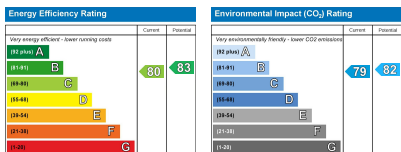
£1,495







TOTAL APPROX. FLOOR AREA 920 SQ.FT. (85.5 SQ.M.)  
 Produced solely for Chase Buchanan  
 Made with Metropix ©2020



Care has been taken in the preparation of these particulars, however, their accuracy is not guaranteed and they do not form part of any contract. Measurements stated must be considered maximum.

- Three double bedrooms
- Part furnished
- Resident parking
- First floor apartment
- Spacious lounge
- Close to local amenities
- Modern kitchen
- EPC rating band C

Set in a great location with easy access to all amenities, a spacious three double bedroom first floor flat.

This property has abundance of space throughout with a spacious lounge, ideal for entertaining your family or friends or a place you can sit back and relax after those long days at work.

With a modern kitchen, the keen cook in the house has every excuse to test their hand at different cuisines from around the world and a great place to prepare those evening meals for your friends or family.

Further benefits include three double bedrooms so everyone in the house is happy, resident parking, ample storage throughout and modern bathroom with separate W/C.

This is a great property ideally located for transport links, buses to Twickenham and Hounslow are on your doorstep while Twickenham and St. Margarets are a 10-15 minute walk away giving fast access to Richmond and Waterloo (20 minutes on the express train from Twickenham). You also are within close proximity to the A316 and A4 which provide fast and effective access to the West of London and beyond.

A property that is perfect for everyone, Rugby fans, commuters and more! Available immediately and is seen as the ideal home for professional sharers or a young family. Viewings are highly advised.

Chase Buchanan are bonded members of ARLA Propertymark

For more information or to book a viewing, please contact:

**020 8758 1755**

isleworth@chasebuchanan.london

7 Odeon Parade, 480 London Road,  
 Isleworth, Middlesex, TW7 4DE



*Our community, your home*