

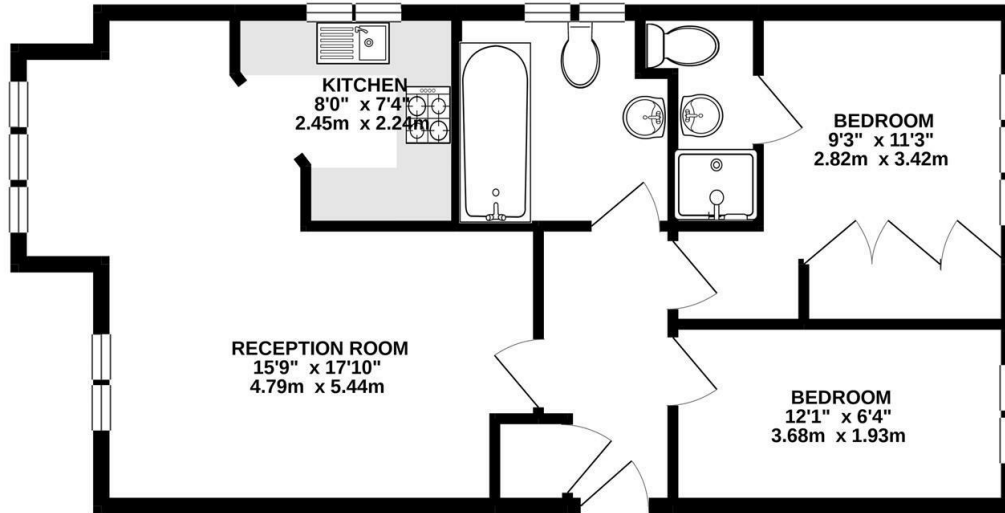
**Carling Court Sherland
Road
Twickenham
TW1 4HE**

£1,325

ChaseBuchanan



GROUND FLOOR
607 sq.ft. (56.4 sq.m.) approx.



TOTAL FLOOR AREA : 607 sq.ft. (56.4 sq.m.) approx.

Whilst every attempt has been made to ensure the accuracy of the floorplan contained here, measurements of doors, windows, rooms and any other items are approximate and no responsibility is taken for any error, omission or mis-statement. This plan is for illustrative purposes only and should be used as such by any prospective purchaser. The services, systems and appliances shown have not been tested and no guarantee as to their operability or efficiency can be given.
Made with Metropix ©2020

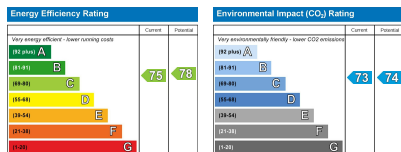
- Two bathrooms
- Large living/dining room
- Allocated parking
- Double bedrooms
- Modern block
- EPC C

This popular modern block only a short walk into Twickenham town centre and minutes walk to Twickenham mainline station.

The generous accommodation offers a large open plan living/dining room leading into a fitted kitchen. There are two good size double bedrooms, one has an en suite shower room and there is a further separate bathroom.

Further benefits include residents allocated parking.

Chase Buchanan are bonded members of ARLA PropertyMark.



Care has been taken in the preparation of these particulars, however, their accuracy is not guaranteed and they do not form part of any contract. Measurements stated must be considered maximum.

For more information or to book a viewing, please contact:

020 8744 2111

ChaseBuchanan

122 Heath Road, Twickenham, Middlesex, TW1 4BW