



## IRVING ROAD W14



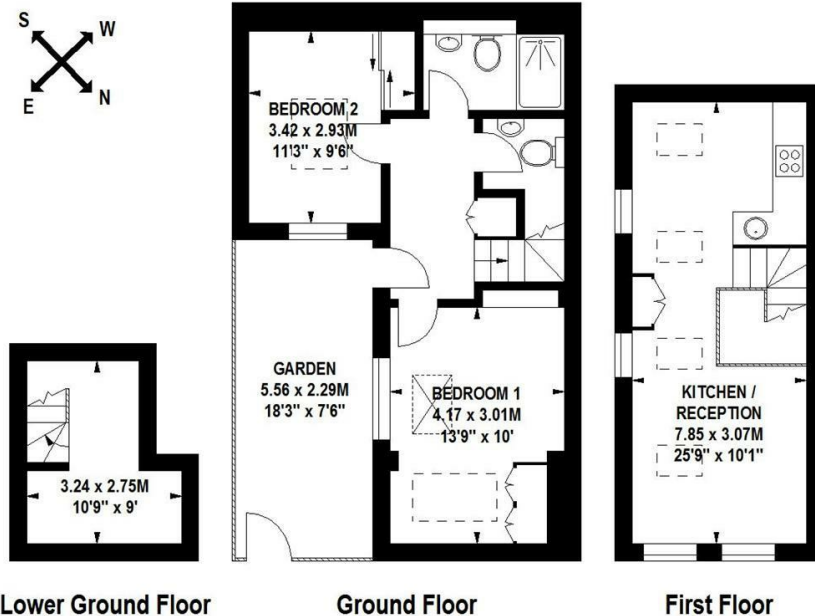


- 2 BEDROOMS • RECENTLY REFURBISHED TO A HIGH STANDARD • OPEN PLAN RECEPTION • WOODEN FLOORS • STYLISH KITCHEN • SHOWER ROOM AND SEPARATE WC • COURTYARD GARDEN • EXCELLENT BROOK GREEN LOCATION • UNFURNISHED • AVAILABLE NOW

Fabulous 2 bedroom cottage, recently refurbished to a high standard, with open plan reception, wooden floors, stylish fitted kitchen, shower room, separate WC and private courtyard garden. Located in the heart of Brook Green, a short walk from Westfield London and the transport links at Shepherds Bush and Hammersmith. Unfurnished, available now.

Irving Road, W14

Approximate Gross Internal Area 69 sq m / 743 sq ft



Floor Plan produced for Finlay Brewer by Mays Floorplans © . Tel 020 3397 4594  
Illustration for identification purposes only, not to scale  
All measurements are maximum, and include wardrobes and window bays where applicable  
This Floorplan has been prepared in accordance with the current edition of the RICS code of measuring practice.

138 Shepherds Bush Road, London, W6 7PB  
Tel: 020 7371 4071 [lettings@finlaybrewer.co.uk](mailto:lettings@finlaybrewer.co.uk)