



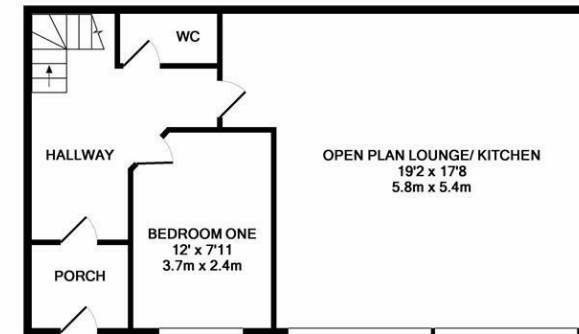
****AVAILABLE IMMEDIATELY****
****FURNISHED**** ****AVAILABLE FOR 6 OR 12 MONTH TENANCY**** Mid terrace two story house in the city centre, only a stone's throw from Newcastle's famous Quayside! A fantastic house in a great location, ideal for two professional or post-graduate sharers.

The property briefly comprises an entrance hallway. There is an enormous open plan reception, with modern fitted kitchen, breakfasting bar and lounge area. The ground floor also has a separate WC, one double bedroom and stairs to access the first floor. The first floor comprises a further four double bedrooms, all large, the master of which also boasts an en suite shower room WC. There is a also a family bathroom WC and a sizeable storage cupboard housing a combi-boiler.

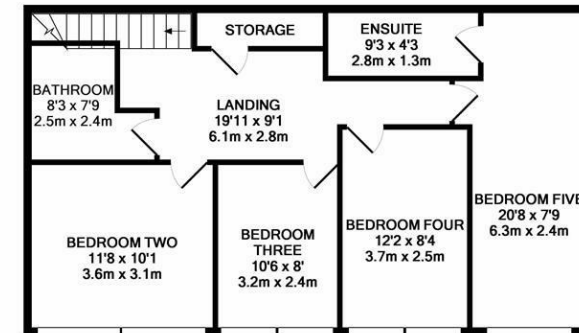
Fully furnished and with gas central heating throughout, this property is not to be missed!

Please note: due to licensing restrictions, this property can only currently be let to either a single family household or a maximum of two individual sharers.

Available Immediately | £800pcm | Mid Terrace House | 1,287 Sq. ft (119.6 m2) | Five Double Bedrooms | Open Plan Lounge/ Kitchen | Bathroom WC | En Suite Shower Room | City Centre Location | Permit Parking | Furnished | GCH | EPC Rating: C



GROUND FLOOR
 APPROX. FLOOR
 AREA 644 SQ.FT.
 (59.8 SQ.M.)



1ST FLOOR
 APPROX. FLOOR
 AREA 643 SQ.FT.
 (59.7 SQ.M.)
 TOTAL APPROX. FLOOR AREA 1287 SQ.FT. (119.6 SQ.M.)
 Whilst every attempt has been made to ensure the accuracy of the floor plan contained here, measurements of doors, windows, rooms and any other items are approximate and no responsibility is taken for any error, omission, or mis-statement. This plan is for illustrative purposes only and should be used as such by any prospective purchaser. The services, systems and appliances shown have not been tested and no guarantee as to their operability or efficiency can be given
 Made with Metropix ©2017

£800 PCM

Misrepresentation Act 1967. These particulars and the descriptions and measurements herein do not constitute representation and whilst every effort has been made to ensure accuracy, this cannot be guaranteed.

