



Shot Tower, Chester

Prices From £330,000

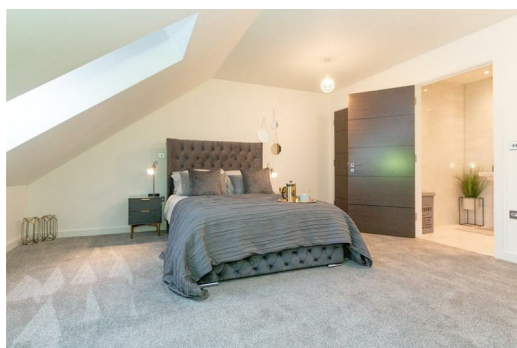
Welcome to your brand-new 3-bedroom duplex apartment at Chester's most exciting address, The Shot Tower. Standing at 40 metres tall with years of industrial history in its trademark red brick, this epic development is the tallest structure in Chester and the oldest of the UK's 3 remaining shot towers.

Standing by the Shropshire Union Canal, 6 minutes from the station and only a 10-minute walk from the city centre, The Shot Tower is positioned in a prosperous area benefitting from major redevelopment in recent years.

The site comprises 2 buildings each side of the tower, as well as a restored Engine House & Whitechapel building that now forms 3 state-of-the-art townhouses and duplex apartments: truly one of a kind. Designed by award winning architects DLA Design, this iconic residence totals 30 one-bed apartments, 24 two-beds, 8 two-bed duplexes, 7 three-bed duplexes and 3 four-bed townhouses.

These third-floor duplexes are next level. Available in 6 different layouts, they offer a mix of sizes, all with 2 bedrooms on the upper floor, and 1 on the lower. They boast so many options so you can choose how the en-suites, bathrooms, WCs, eave's storage and balconies are positioned to suit your needs. They feature open plan living areas, high spec kitchens with designer appliances, carpeted bedrooms and stylish interiors. So, whether you're a couple or a group of friends that fancy plenty of room, or a modern family that wants practicality, these duplexes are for you.

The Shot Tower is proud to offer Help-to-Buy; the gov. backed scheme that helps first time buyers purchase a new home. This means that you're able to secure your dream apartment with just a 5% cash deposit.





Energy Efficiency Rating		Environmental Impact (CO ₂) Rating	
Rating	Score	Rating	Score
A	92-100	A	1-10
B	81-91	B	11-20
C	69-80	C	21-30
D	58-68	D	31-40
E	47-57	E	41-50
F	35-46	F	51-60
G	21-34	G	61-70

England & Wales

Ascend
Built on higher standards