

# Parkheath

*Sold on Service*

---

## Eton Avenue NW3

£650 per week (£2816.67 Pcm)




Delightful 2/3 bedroom maisonette  
2 terraces  
2nd and 3rd floors in immaculate period conversion  
Large oak wood floor reception with doors to balcony  
High quality kitchen with all appliances  
Master bedroom with balcony access  
Fitted wardrobes and en suite bathroom

Second double bedroom with en suite bathroom  
Third bedroom/study with en suite shower room  
Guest wc  
Prestigious tree-lined road  
Moments to Swiss Cottage underground  
Close to all the areas amenities  
Council Tax: Camden band tba

# Eton Avenue

Approximate Gross Internal Area = 101.3 sq m / 1090 sq ft



 = Reduced headroom below 1.5m / 5'0"

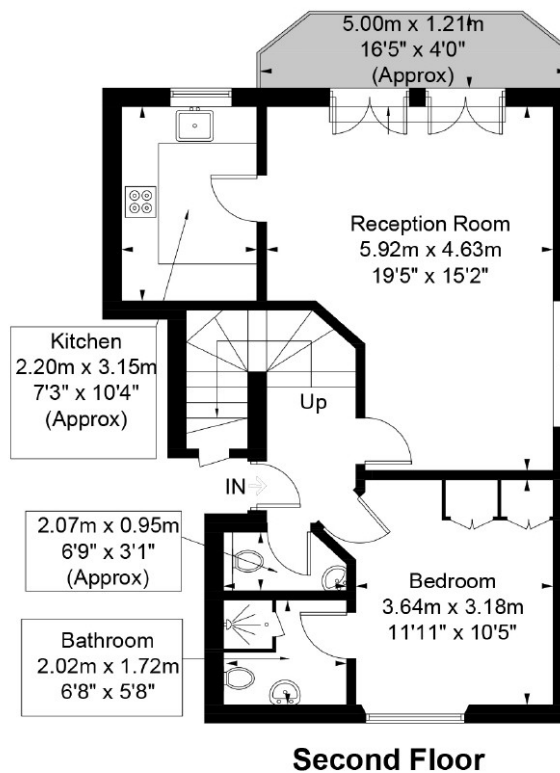
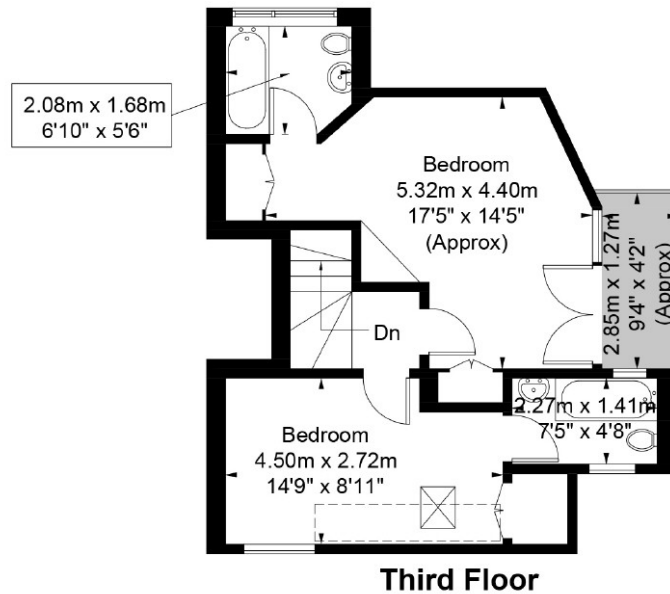


Illustration for identification purposes only, measurements are approximate, not to scale. FloorplansUsketch.com © 2018 (ID459725)  
ELLIE CLAIRE PHOTOGRAPHY LTD

The particulars do not constitute part of an offer or contract. The particulars, including text, photographs and plans, are for the guidance only of prospective purchasers/tenants and must not be relied upon as statements of fact. The descriptions provided therein represent the opinion of the author and whilst given in good faith should not be construed as statements of fact. Nothing in these particulars shall be deemed a statement that the property is in good condition or otherwise or that any services or facilities are in good working order. All measurements are approximate.