



Albert Road, Evesham, WR11 4LB

**SHELDON
BOSLEY
KNIGHT**

LAND AND
PROPERTY
PROFESSIONALS

Property Description

*** GREAT VALUE, THREE BEDS,
LARGE GARDEN AND IN NEED OF
SOME TLC ***

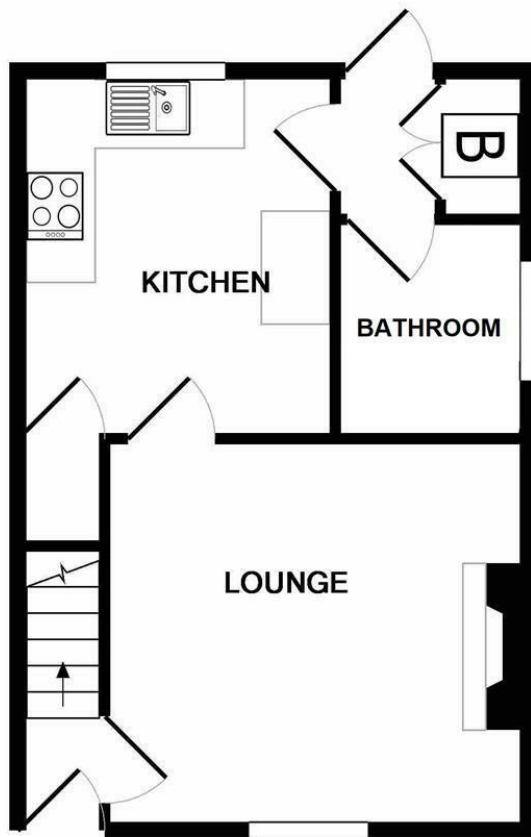
A chance to purchase a spacious
THREE BEDROOM end of terrace
property with lots of scope to make a
house a home or an ideal rental
property. The property comprises of;
entrance hall, lounge, kitchen/breakfast,
rear hall and family bathroom. Upstairs
are three bedrooms. Other benefits
include the property is CHAIN FREE,
spacious rear gardens and on street
parking.



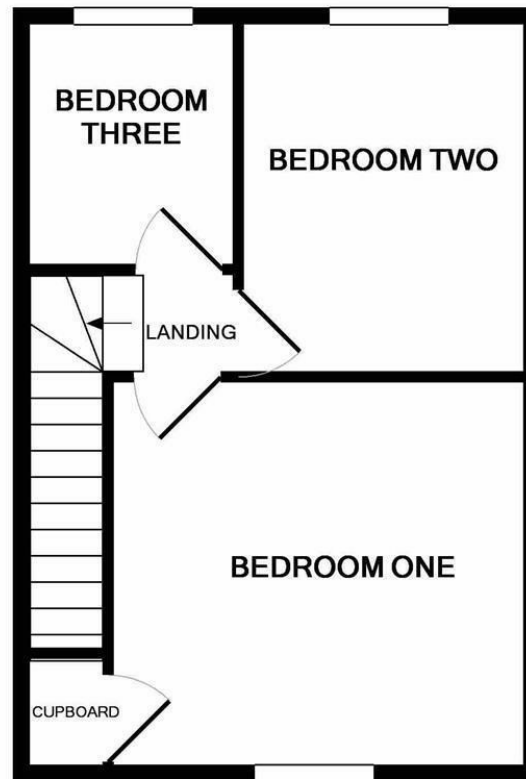


Key Features

- CHAIN FREE
- THREE BEDROOMS
- REAR GARDEN
- END OF TERRACE



GROUND FLOOR



1ST FLOOR

This floor plan is not to scale and is for guidance purposes only
Made with Metropix ©2020

