

tavistockbow

For Rent



People Make Places



Long Acre, Covent Garden WC2

Studio | 318 sq ft

£465 pw





A good size studio flat ideally located in central Covent Garden. The accommodation includes an open plan studio room with sleeping area and a modern shower room.

Available from mid March on an unfurnished basis.

What you need to know

- Studio
- One bathroom
- Second floor (no lift)
- Wooden flooring
- Open plan kitchen
- Unfurnished
- Central Covent Garden
- Modern bathroom
- Moments from Covent Garden tube
- Available mid March



Long Acre, Covent Garden WC2



Overview

A fantastic studio apartment to rent in Avon House, a wonderful Victorian building in the heart of Covent Garden.

The property benefits from wooden floors throughout and an open plan kitchen reception. The apartment has sash windows that provide a charming view along Langley Street and Long Acre. The modern bathroom is complete with bath tub and overhead shower. There is a separate sleeping area that is complete with a beautiful period fireplace.

The apartment is conveniently located in a very central Covent Garden location and benefits from being a short stroll away from Seven Dials village, Mercers Walk and the iconic Piazza. Transport links include Covent Garden tube station which is on your doorstep. Available from mid March, on a part-furnished basis, 1 to 3 year contract, straight or with a minimum 6 months mutual break clause as negotiated.

Council tax band D.



People Make Places

London is collection of inspiring urban villages and one of the most exciting places in the world to live, work & play.

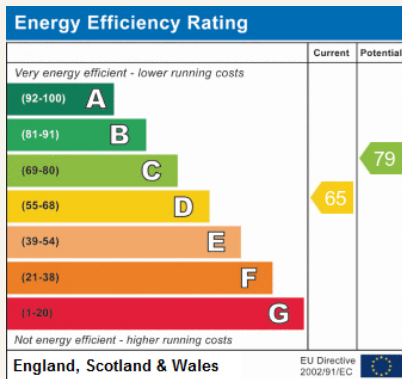
We work with both property owners and their occupiers, sharing the story of these vibrant neighbourhoods, conveying the unique soul & energy to future custodians, the people who'll keep them buzzing.

And unlike many real estate businesses we're not just about buildings, because streets & buildings don't make a neighbourhood.

We're about building relationships, because **people make places**.

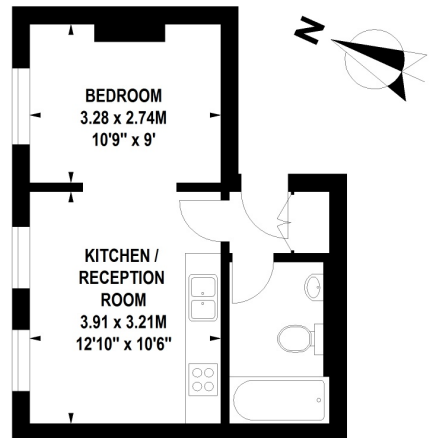
MISINTERPRETATION ACT [COPYRIGHT] DISCLAIMER: Tavistock Bow Ltd for themselves and for the vendor(s) of this property whose agents they are, given notice that: 1. These particulars do not constitute, not constitute any part of, an offer or contract. 2. None of the statements contained in these particulars as to the property are to be relied on as statements or representations of fact. 3. Any intending purchaser or lessee must satisfy themselves by inspection or otherwise as to the correctness of each of the statements contained in these particulars. 4. The vendor(s) or lessor(s) do not make or give and neither Tavistock Bow Ltd nor any person in their employment has any authority to make or give any representation or warranty whatever in relation to this property. Finance Act 1989, Unless otherwise stated all prices and rents are quote exclusive of VAT. Property Misrepresentation Act 1991; These details are believed to be correct at the time of compilation but may be subject to subsequent amendment.

Follow us:     @tavistockbow



Long Acre, WC2

Approximate Gross Internal Area 29.5 sq m / 318 sq ft



Second Floor

Floor Plan produced for Tavistock Bow by Mays Floorplans © . Tel 020 3397 4594
Illustration for identification purposes only, not to scale
All measurements are maximum, and include wardrobes and window bays where applicable

tavistockbow

21 New Row, Covent Garden,
London, WC2N 4LE

t: 020 7477 2177
e: hello@tavistockbow.com
w: tavistockbow.com



Long Acre, Covent Garden WC2