



Heathfield, Chester-le-street, Co.Durham

£139,950

## Property Features

---

- Two Bedroom End Terrace
- Gas Central Heating
- Altered Floorplan
- Well Maintained
- Sought After Location
- UPVC Double Glazing

## Full Description

---

SEVEN KEYS welcome to the market this immaculately presented two bedroom end terrace. The property was originally constructed as a three bedroom home, however an improved altered floorplan makes use of the space in an arguably much better way, with two larger double bedrooms.

The property is briefly comprising entrance lobby that leads into the downstairs living room and kitchen/ diner, whilst to the first floor there are two bedroom and family bathroom. Externally the property benefits from double driveway to the front and garden to the rear.

The market town of Chester-le-street is a much sought after location, with outstanding schools, pubs, restaurants and amenities. Emirates International Cricket Stadium, Lumley Castle and The Riverside Park provide excellent entertainment and fun for all the family.

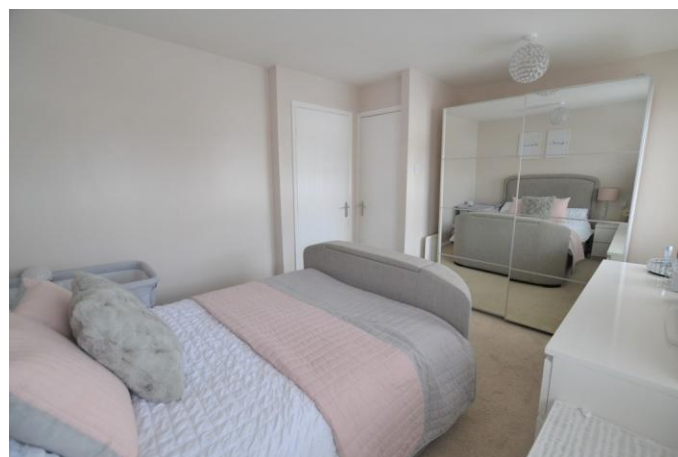
Book your viewing online today at [SevenKeys.co.uk](http://SevenKeys.co.uk).

### LIVING ROOM

10' 4" x 16' 0" (3.17m x 4.89m) The focal point of this room is the feature fireplace with decorative surround and hearth. Double glazing to the front of the property, carpet and radiator.

### KITCHEN

13' 5" x 8' 7" (4.11m x 2.63m) Modern fitted kitchen with a range of wall and base units, gas hob and integrated oven, plumbing for washing machine, stainless steel sink and drainer with mixer tap and radiator. Storage cupboard under the stairs and access into the rear garden via upvc door.





### BEDROOM ONE

13' 6" x 9' 10" (4.12m x 3.02m) Originally split into two bedrooms, the master bedroom now provides a larger living space with plenty of room for furniture. Double glazing to the rear of the property, storage cupboard and carpet.

### BEDROOM TWO

10' 4" x 8' 11" (3.17m x 2.74m) Generous double bedroom with double glazed windows, radiator and fitted wardrobes.

### BATHROOM

Fitted with white suite comprising of panelled bath with overhead shower, pedestal wash basin, low level toilet, tiled walls and flooring.

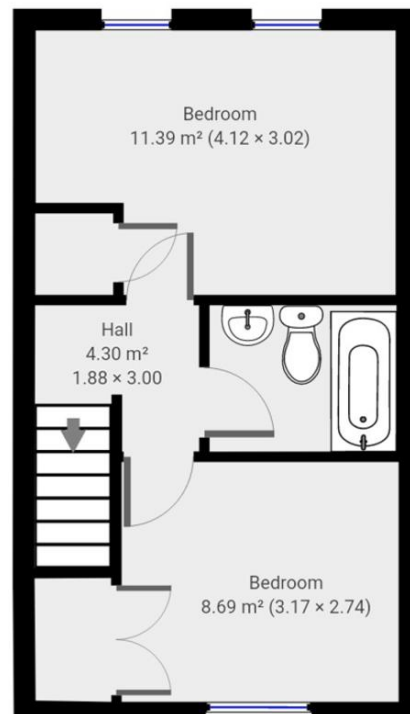
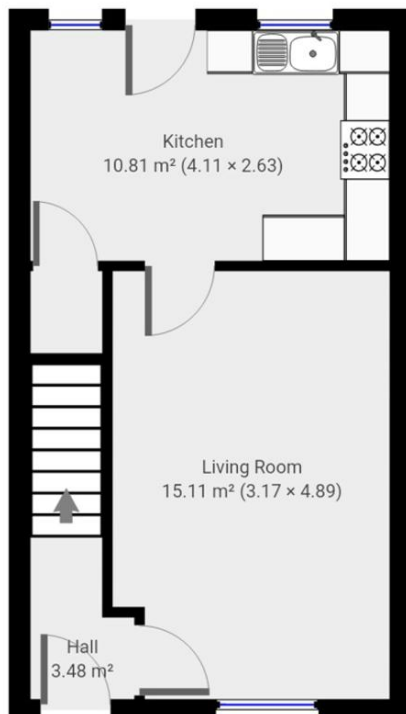
### EXTERNAL

To the front of the property there is double driveway with space for two cars. Access around the side of the property leads to the rear garden with patio area, lawn and shed storage.





%epcGraph\_c\_1\_339%



THIS FLOORPLAN IS PROVIDED WITHOUT WARRANTY OF ANY KIND. SEVEN KEYS DISCLAIMS ANY WARRANTY INCLUDING, WITHOUT LIMITATION, SATISFACTORY QUALITY OR ACCURACY OF DIMENSIONS.

Boston House  
Unit 2 Fifth Avenue  
Team Valley Trading  
Estate  
Gateshead

[www.sevenkeys.co.uk](http://www.sevenkeys.co.uk)  
[info@sevenkeys.co.uk](mailto:info@sevenkeys.co.uk)  
0191 4971797

Agents Note: Whilst every care has been taken to prepare these particulars, they are for guidance purposes only. All measurements are approximate and are for general guidance purposes only and whilst every care has been taken to ensure their accuracy, they should not be relied upon and potential buyers/tenants are advised to recheck the measurements