



- GAS CENTRAL HEATING
- THROUGH LOUNGE DINER
- SOUTH FACING GARDEN
- CONVIENT LOCATION

Orme Road, Worthing, BN11 4EU

GUIDE PRICE £275,000

A fantastic two double bedroom terraced house in a perfect central location in Worthing. This lovely cottage is a perfect first time purchase or an ideal buy to let investment and cannot be missed.



Property Description

A fantastic two double bedroom terraced house in a perfect central location in Worthing. This lovely cottage is a perfect first time purchase or an ideal buy to let investment and cannot be missed.

LOUNGE / DINER

22' 4" x 12' 2" (6.81m x 3.71m) WINDOW TO FRONT AND REAR ASPECT

KITCHEN

11' 4" x 6' 3" (3.45m x 1.91m) WINDOW TO SIDE ASPECT

BEDROOM ONE

10' 3 MAX" x 10' 8 MAX" (3.12m x 3.25m) WINDOW TO FRONT ASPECT

BEDROOM TWO

11' 2 MAX" x 6' 6 MAX" (3.4m x 1.98m) WINDOW TO REAR ASPECT

BATHROOM

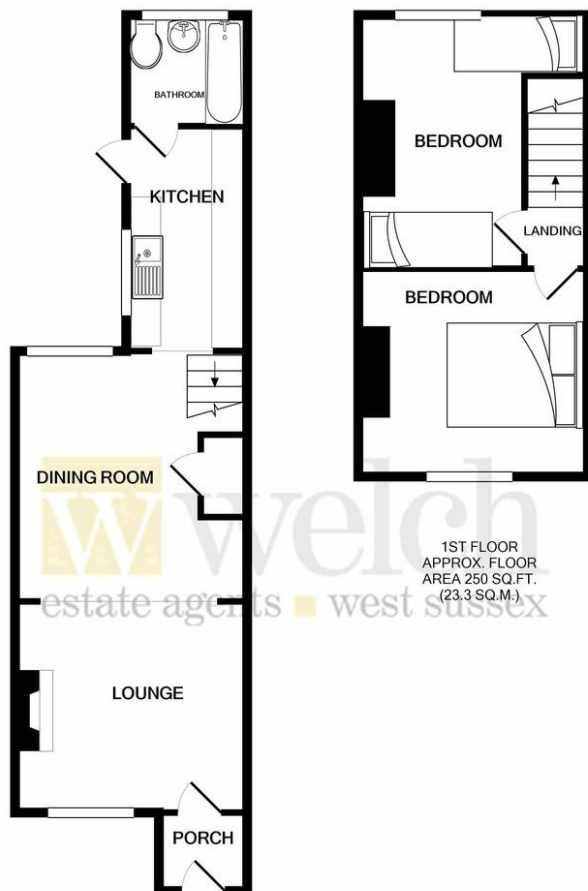
THREE PEICE SUITE, WINDOW TO REAR ASPECT

GARDEN

SIDE RETURN OPEN TO REAR GARDEN LAID LAWN, SOUTH FACING







1ST FLOOR
APPROX. FLOOR
AREA 250 SQ.FT.
(23.3 SQ.M.)

GROUND FLOOR
APPROX. FLOOR
AREA 390 SQ.FT.
(36.2 SQ.M.)

TOTAL APPROX. FLOOR AREA 640 SQ.FT. (59.5 SQ.M.)

Whilst every attempt has been made to ensure the accuracy of the floor plan contained here, measurements of doors, windows, rooms and any other items are approximate and no responsibility is taken for any error, omission, or mis-statement. This plan is for illustrative purposes only and should be used as such by any prospective purchaser. The services, systems and appliances shown have not been tested and no guarantee as to their operability or efficiency can be given
Made with Metropix ©2021

%epcGraph_c_1_334%

3 Marston Road, Worthing, West
Sussex, BN14 8BD

www.w-welchestateagents.co.uk
01903 898000
sales@w-welchestateagents.co.uk

Agents Note: Whilst every care has been taken to prepare these particulars, they are for guidance purposes only. All measurements are approximate and for general guidance purposes only and whilst every care has been taken to ensure their accuracy, they should not be relied upon and potential buyers/tenants are advised to recheck the measurements