



FEDERATION
OF INDEPENDENT
AGENTS



5, Lakeside Drive, Park Royal, NW10 7FX
£1,350 PCM



Floor Plan

Dan Court

Approximate Gross Internal Area = 52 sq m / 560 sq ft

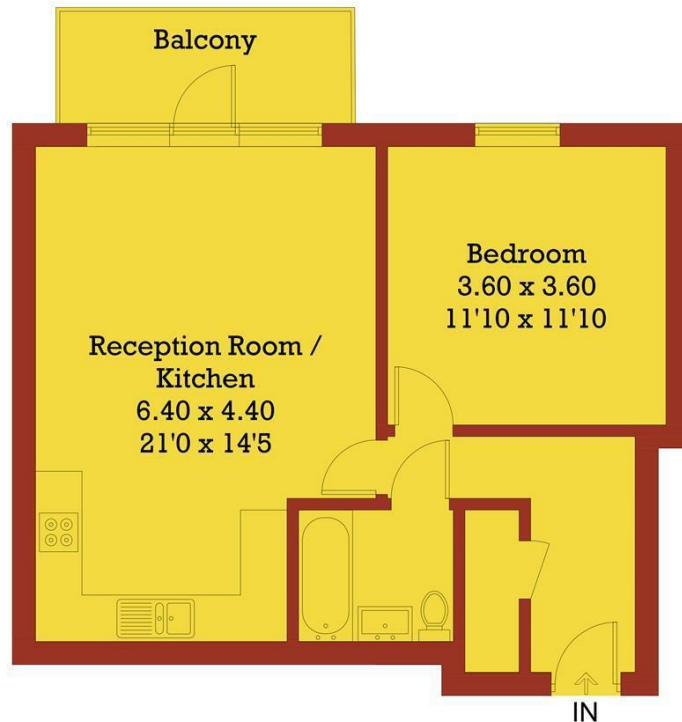


Illustration for identification purposes only, measurements are approximate, not to scale. FloorplansUsketch.com © 2019 (ID533014)

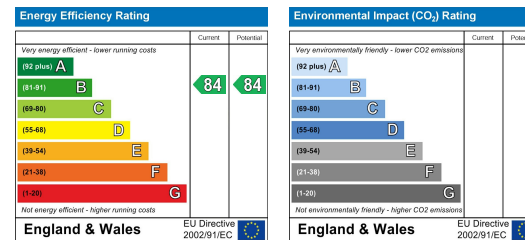
Accommodation

- Nil Deposit
- Off-Street Parking
- Lakeside Drive
- Communal Garden
- Open Plan Living Room
- Fully Fitted Kitchen
- Private Balcony
- Tiled Bathroom
- Fitted Storage
- Entryphone System

Viewing

Please contact our Brentford branch on 020 8994 9886 if you wish to arrange a viewing appointment for this property or require further information.

Energy Efficiency Graph



These particulars, whilst believed to be accurate are set out as a general outline only for guidance and do not constitute any part of an offer or contract. Intending purchasers should not rely on them as statements of representation of fact, but must satisfy themselves by inspection or otherwise as to their accuracy. No person in this firm's employment has the authority to make or give any representation or warranty in respect of the property.



SALES
020 8994 9886

LETTINGS
020 8560 9555

PROPERTY MANAGEMENT
020 8994 9945

ACCOUNTS
020 8758 2888

