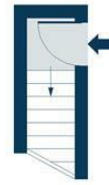
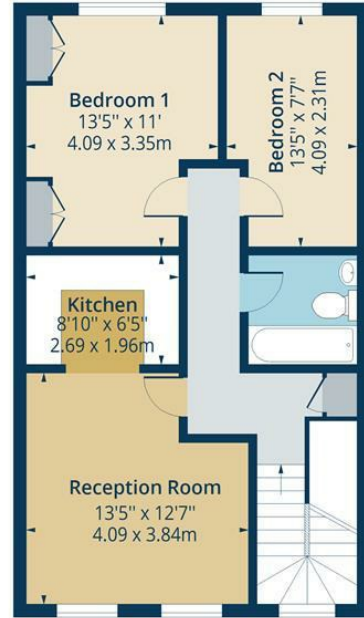


Evering Road  
Approx. Gross Internal Area 664 Sq Ft - 61.69 Sq M

**oakwood**  
thinking local



**First Floor Entrance**  
Floor Area 23 Sq Ft - 2.14 Sq M

**Second Floor**  
Floor Area 641 Sq Ft - 59.55 Sq M

For Illustrational Purposes Only - Not To Scale  
lpaplus.com

Whilst every attempt has been made to ensure the accuracy of the floor plan contained here, measurements of doors, windows, rooms and any other items are approximate and no responsibility is taken for any error, omission or mis-statement. This plan is for illustrative purposes only and should be used as such by any prospective purchaser. The services, systems and appliances shown have not been tested and no guarantee as to their operability or efficiency can be given.



**oakwood**  
thinking local

**Evering Road, N16**



**£1,400 Per Month**

A two double bedroom flat set on the top floor of this three storey Victorian house. Internally the flat is in excellent condition and features light and airy rooms and two double bedrooms. The flat is located close to local transport including Rectory Road Station with easy access into Liverpool Street.  
Offered unfurnished.

**oakwood**

While we endeavor to make our sales details accurate and reliable, if there is any point which is of particular importance to you, please contact the office and we will be pleased to confirm the position for you. Particularly if contemplating traveling some distance to view the property. All room sizes have been measured with an electronic sonic tape, the accuracy of which cannot be guaranteed. You are advised to make your own checks before contemplating a purchase, especially if an exact measurement is of particular importance to you.

[oakwoodestateagents.com](http://oakwoodestateagents.com)

48 Stoke Newington Church Street  
London N16 ONB  
Company No. 2995463, Oakwood Estate Agents Limited T/A Oakwood

Tel 020 7249 1000  
Fax 020 7249 2000  
[www.oakwoodestateagents.com](http://www.oakwoodestateagents.com)



