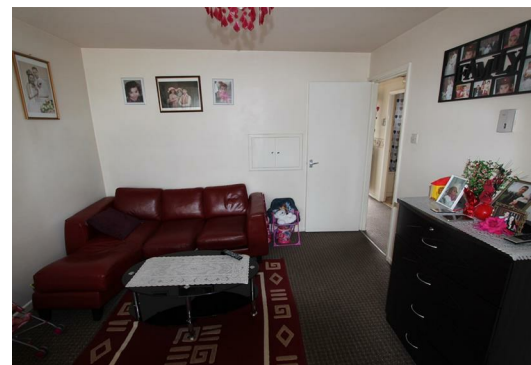
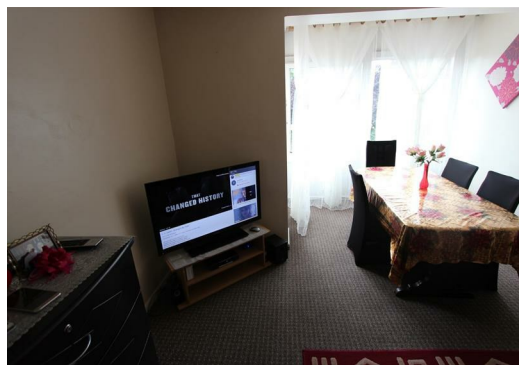




London Road,
Leicester, Leicestershire, LE2 1ND
£425 PCM



A spacious one bedroom first floor flat centrally located close to the city centre and University of Leicester and benefiting from storage heaters and partly double glazed. Comprising hallway lounge, bedroom, bathroom, kitchen. The property is offered on an unfurnished basis but includes a cooker. Available 1st March 2021.

ACCOMMODATION

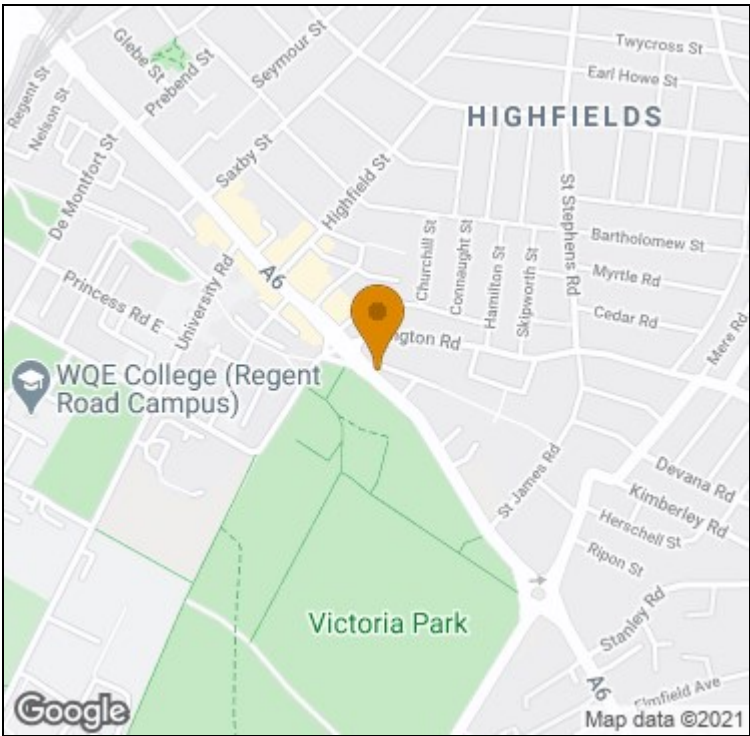
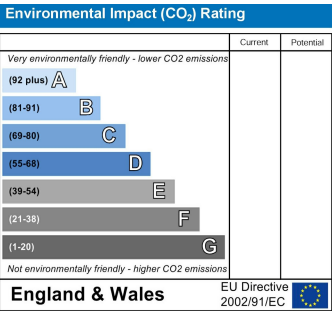
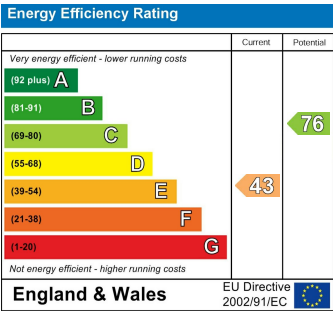
HALLWAY

KITCHEN

LOUNGE

BATHROOM

DOUBLE BEDROOM



t: 01163660990 e: oadby@newtonfallowell.co.uk
www.newtonfallowell.co.uk