



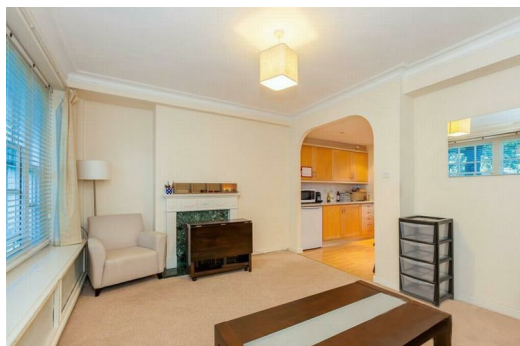
**Newcourt Street, St Johns Wood  
NW8 7AD**


**£1,800 Per Calendar Month**

Presenting this fabulous three bedroom ground floor flat located just a short stroll from St Johns wood tube station (Jubilee line) and next to Regents Park. This red brick building is nestled amongst St John's Wood's beautiful leafy roads.

Large reception room, three good size bedrooms, separate kitchen, contemporary bathroom, newly decorated, bright and airy throughout.

Call now to register your interest and arrange a viewing.



Energy Efficiency Rating		
	Current	Potential
Very energy efficient - lower running costs		
(92 plus) <b>A</b>		
(81-91) <b>B</b>		
(69-80) <b>C</b>		<b>72</b>
(55-68) <b>D</b>	<b>59</b>	
(39-54) <b>E</b>		
(21-38) <b>F</b>		
(1-20) <b>G</b>		
Not energy efficient - higher running costs		
<b>England &amp; Wales</b>	EU Directive 2002/91/EC	

Environmental Impact (CO <sub>2</sub> ) Rating		
	Current	Potential
Very environmentally friendly - lower CO <sub>2</sub> emissions		
(92 plus) <b>A</b>		
(81-91) <b>B</b>		
(69-80) <b>C</b>		
(55-68) <b>D</b>		
(39-54) <b>E</b>		
(21-38) <b>F</b>		
(1-20) <b>G</b>		
Not environmentally friendly - higher CO <sub>2</sub> emissions		
<b>England &amp; Wales</b>	EU Directive 2002/91/EC	