

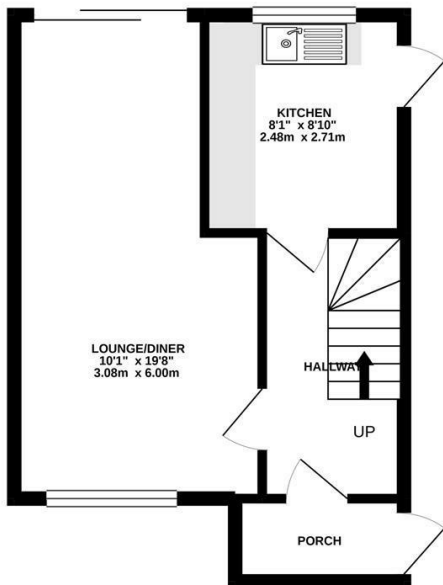
**Forge Lane
Feltham
TW13 6UR**

£1,395

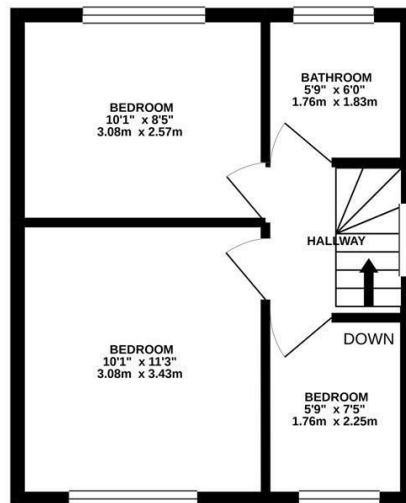
ChaseBuchanan



GROUND FLOOR
336 sq.ft. (31.2 sq.m.) approx.



1ST FLOOR
313 sq.ft. (29.0 sq.m.) approx.



TOTAL FLOOR AREA: 648 sq.ft. (60.2 sq.m.) approx.

Whilst every attempt has been made to ensure the accuracy of the floorplan contained here, measurements of doors, windows, rooms and any other items are approximate and no responsibility is taken for any error, omission or mis-statement. This plan is for illustrative purposes only and should be used as such by any prospective purchaser. The services, systems and appliances shown have not been tested and no guarantee as to their operability or efficiency can be given.
Made with Metropix ©2021

- Ready to move into now
- Family home
- Three bedrooms
- Spacious living/dining room
- Large and private garden
- Easy parking

Bring your suitcase and move straight into this lovely family home.

As you step through the front door you will find a spacious and bright living/dining room with doors leading to a private garden, you will also find a separate kitchen. Upstairs there are two double bedrooms, a further single and a family bathroom.

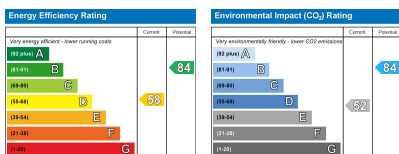
Chase Buchanan are bonded members of ARLA PropertyMark.

For more information or to book a viewing, please contact:

020 8941 7576

ChaseBuchanan

101 High Street, Hampton Hill, TW12 1NJ



Care has been taken in the preparation of these particulars, however, their accuracy is not guaranteed and they do not form part of any contract. Measurements stated must be considered maximum.