

1A Old Haymarket 73-89 Victoria Street, Liverpool, L1 6AF
Tel: 0151 305 2577
Email: liverpoolsales@ascendproperties.com
www.ascendproperties.com

Ascend

Built on higher standards



Alexandra Tower, Princes Parade, Liverpool

Asking Price £130,000

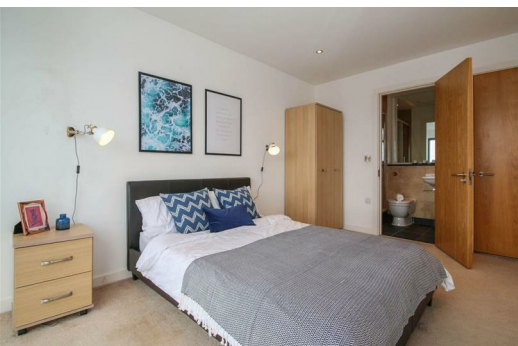
This is your chance to live in a prime waterfront location, right on Princes Dock in Liverpool. This iconic and imposing development has a range of 1 and 2-bedroom apartments available and is in an ideal location and perfect for investment or owner occupation.

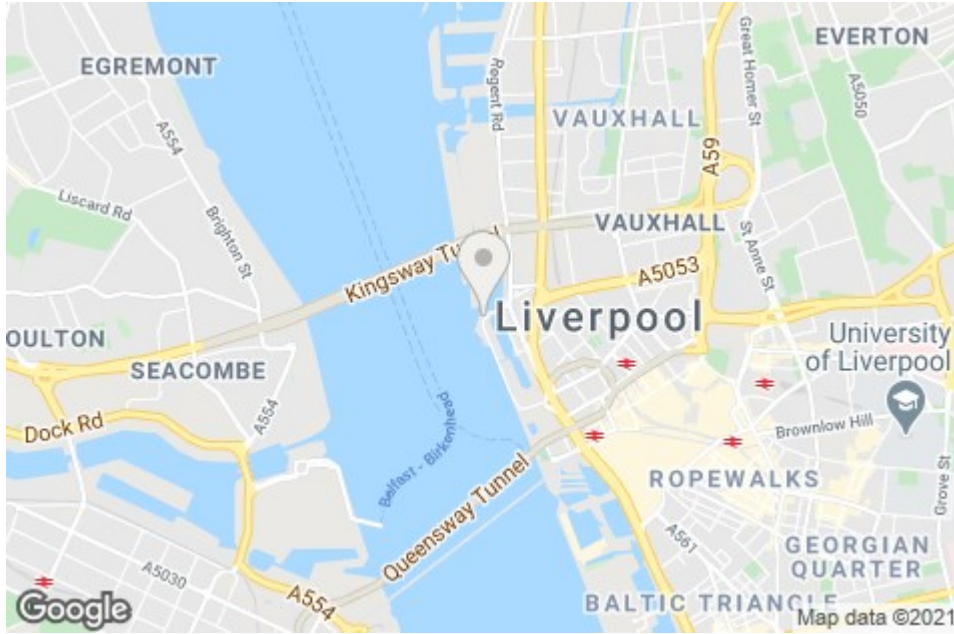
This apartment is absolutely spot-on. Inside you'll find a bright open-plan kitchen/lounge/dining room with huge windows. The kitchen is super-sleek with wooden flooring, white cabinets, chrome handles and an integrated hob/oven. The bedrooms are good sized doubles with plush carpeting underfoot - the perfect haven to relax away from the hustle and bustle of the city - and the modern, tiled bathroom is equally as luxurious.

A short stroll from your apartment takes you into the heart of Liverpool, where you'll have more bars, restaurants, eateries and shops than you could shake a stick at.

If you'd like to wander further afield, you have a huge range of transport links at your fingertips, along with easy access to the whole of Liverpool and beyond - you really couldn't be more perfectly located. With a bus stop practically on your doorstep and James Street train station just a short stroll away, commuting is a breeze.

Properties like this tend to get snapped up quickly, so make sure you give us a call if you fancy a closer look. And just so you know, the images are for marketing purposes only, so the fixtures and fittings may vary.





Energy Efficiency Rating		Environmental Impact (CO ₂) Rating	
Current	Potential	Current	Potential
82	82	77	77

The table displays the Energy Efficiency Rating (EPC) and Environmental Impact (CO₂) Rating. The EPC rating is 82, and the CO₂ rating is 77. The table also shows the scale for each rating, from A (92-100) to G (1-10).