

1A Old Haymarket 73-89 Victoria Street, Liverpool, L1 6AF
Tel: 0151 305 2577
Email: liverpoolsales@ascendproperties.com
www.ascendproperties.com

Ascend

Built on higher standards



2 Jamaica Street, Liverpool

£650 PCM

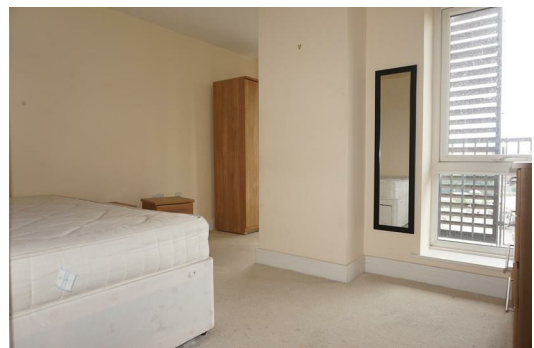
****Half price rent for first month for a 12 month agreement****

This fantastic two bedroom apartment is situated in an ultra-stylish, peaceful development which rests just a stone's throw away from all the action of the city centre - the perfect destination for students and working professionals.

This fab property features a bright, open-plan lounge and a kitchen that benefits from tonnes of space - a rarity in city centre apartments. The kitchen has been decked out in a super-slick black and white design and comes complete with an integrated hob - very swish.

With a sleek bathroom and great sized bedroom to match, this fully furnished property is ready to move into straight away.

The location is pretty top-notch too. A 5 minute walk will get you to Wapping Dock, with Liverpool One just a few minutes further - perfect for working professionals. If you take a quick stroll around your development you'll also find a great range of cafes and restaurants, as well as a chic bakery, brewery and the Lantern Theatre. If you fancy journeying further, there's a bus stop practically on your doorstep and Liverpool Central train station is just a hop, skip and a jump away.



8 Park Lane Plaza 2 Jamaica street, Liverpool, Merseyside, L1 0AF



Energy Efficiency Rating			Environmental Impact (CO ₂) Rating		
Very energy efficient - lower running costs	Good	Bad	Very environmentally friendly - lower CO ₂ emissions	Good	Bad
92-100 A			10-15 A		
82-91 B			16-20 B		
72-81 C			21-25 C		
62-71 D			26-30 D		
52-61 E			31-35 E		
42-51 F			36-40 F		
32-41 G			41-45 G		
Very energy efficient - higher running costs			Very environmentally friendly - higher CO ₂ emissions		