

**Bonham Road, Brixton, SW2**

2 bedroom flat to let

£385 Per Week

Part furnished

Property Details

This is a fantastic two bedroom flat within easy walking distance of both Clapham and Brixton. As you enter the property, to your left you have a lovely and spacious reception/kitchen area. The living area is generously sized, with a dining area in front of huge bay windows. The kitchen is then set back allowing for the perfect combination of being open plan and also separate. Across the hall are the two large double bedrooms, the smaller bedroom has the added benefit of a balcony and the family bathroom is modern and clean. You'll be around a thirteen minute walk from Brixton underground and around a nineteen minute walk from Clapham North station.

Council tax band D EPC rating D (64)

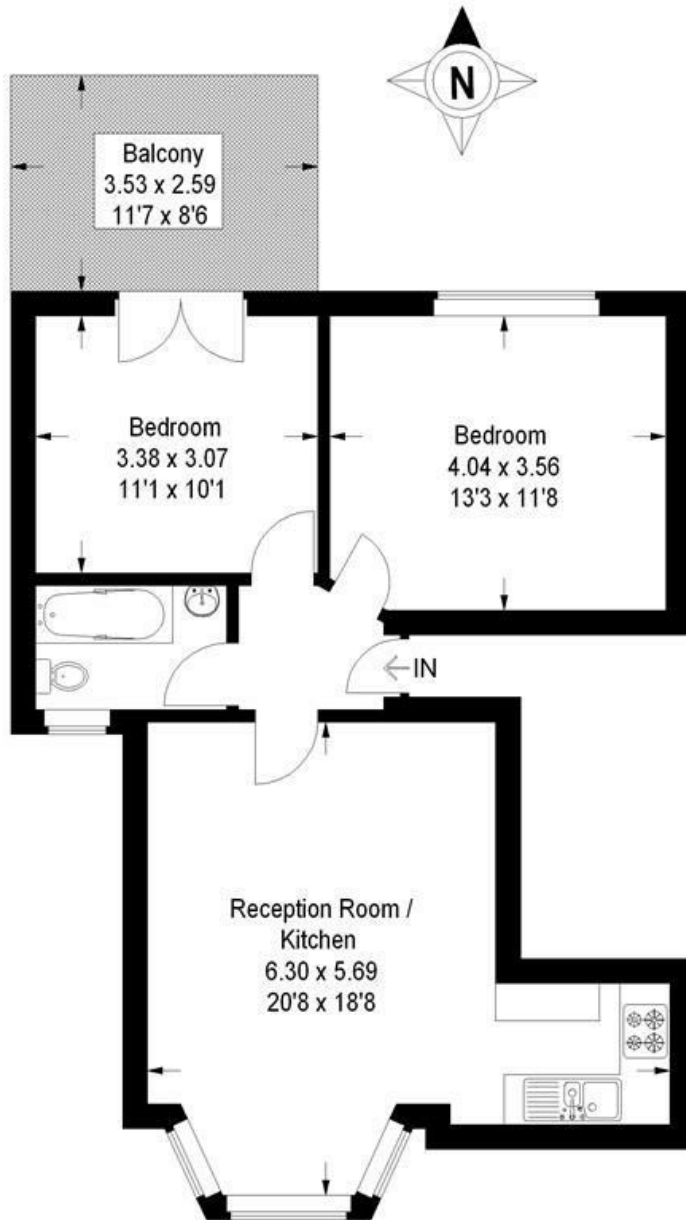
Features

- Balcony
- Victorian conversion
- Around a 13 minute walk to Brixton underground
- 2 Bathrooms
- Open plan kitchen/reception
- Bright and airy throughout



Bonham Road, SW2

Approximate Gross Internal Area
58.3 sq m / 628 sq ft



First Floor

This plan is for layout guidance only. Not drawn to scale unless stated. Windows and door openings are approximate. Whilst every care is taken in the preparation of this plan, please check all dimensions, shapes and compass bearings before making any decisions reliant upon them. (ID169853)

Bonham Road, Brixton, SW2

