



Jebb Street, London, , E3 2TL
£2,350 PCM

Elms Estates are please to be able to bring to the market To Let this newly refurbish large 4 Bedroom Terraced House situated within easy reach of Bow Church DLR Station and Bow Road (District Line) Tube Station and the Multiple Bus Routes servicing Bow Road with routes in to the city, West End and beyond. For car drivers the is also excellent access to the A12.

The property offers good sized living accommodation with a Reception Room that opens on to a newly refurbished Kitchen/Dinner with patio doors directly into the large, low maintenance garden. There are three Large Double Bedrooms (one on the ground floor and two on the first floor) and an additional 4th single bedroom which unfortunately since the introduction of HMO licensing can no longer be occupied by an adult but is still suitable as a child's bedroom. The bathroom is located on the first floor and has a white three piece bathroom suite with a shower over the bath.

This property is available NOW



Exterior

Reception Area

9'7" x 12'10" (2.93 x 3.92)

Kitchen/Dinning Area

15'8" x 10'0" (4.80 x 3.06)

Additional Reception/Storage Room

6'1" x 9'8" (1.86 x 2.97)

Bedroom 1

10'7" x 14'8" (3.25 x 4.48)

Bedroom 2

10'3" x 14'10" (3.13 x 4.53)

Bedroom 3

10'3" x 12'10" (3.13 x 3.92)

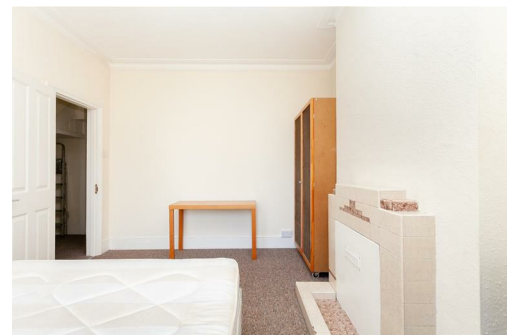
Bedroom 4

5'11" x 8'1" (1.81 x 2.48)

Bathroom

Garden

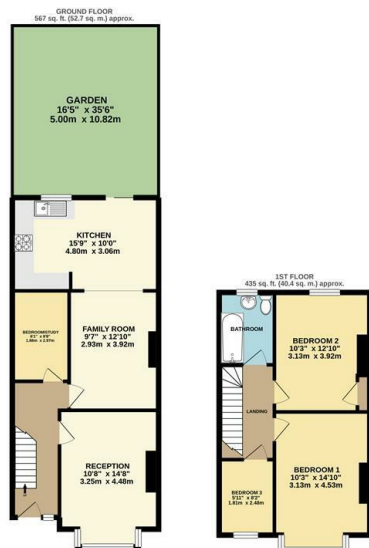
16'4" x 35'5" (5.00 x 10.82)



Jebb Street, E3



Approximate Gross Internal Area 1001 sq. ft. - 93 sq. m.



Total Floor Area 1001 sq. ft. - 93 sq. m. Approx.

For Illustration Purposes Only - Not To Scale.
lpaplus.com

Energy Efficiency Rating		Environmental Impact (CO ₂) Rating	
Current	Potential	Current	Potential
Very energy efficient - lower running costs		Very environmentally friendly - lower CO ₂ emissions	
(92 plus) A		(92 plus) A	
(81-91) B		(81-91) B	78
(69-80) C		(69-80) C	
(55-68) D	66	(55-68) D	61
(39-54) E		(39-54) E	
(21-38) F		(21-38) F	
(1-20) G		(1-20) G	
Not energy efficient - higher running costs		Not environmentally friendly - higher CO ₂ emissions	
England & Wales	EU Directive 2002/91/EC	England & Wales	EU Directive 2002/91/EC