



Brookfield Road, London, W4 1DJ

£1,050,000

WHITMAN & CO.

SALES · LETTINGS · COMMERCIAL

- Three bedroom Edwardian house
- Master bedroom with en suite shower room
- Private patio with rear access
- Bedford Park located
- 22' fully integrated kitchen/breakfast room
- Freehold

Tenure - Freehold
 Local Authority - London borough of Ealing
 Council Tax - Band F (£2270 pa)

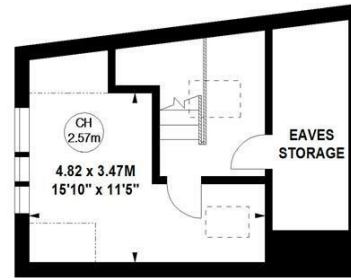
THE PROPERTY

A well presented three bedroom Edwardian house ideally located in this popular residential street on the borders of Bedford Park offering close proximity to all amenities. Accommodation comprises: Master bedroom with en suite shower room, two further bedrooms, luxury bathroom, front reception room with bay window, 22' fully integrated kitchen/breakfast room, utility room, private patio garden with rear access, situated within close proximity of Turnham Green tube station and the extensive facilities, shopping, bars and restaurants on Chiswick High Road.

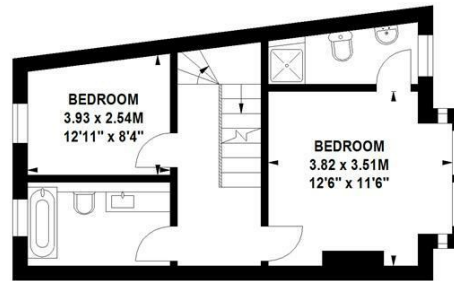
Brookfield Road, W4

Approximate gross internal area
 111.57 sq m / 1201 sq ft
 (Including Eaves Storage)
 Eaves Storage
 6.50 sq m / 70 sq ft

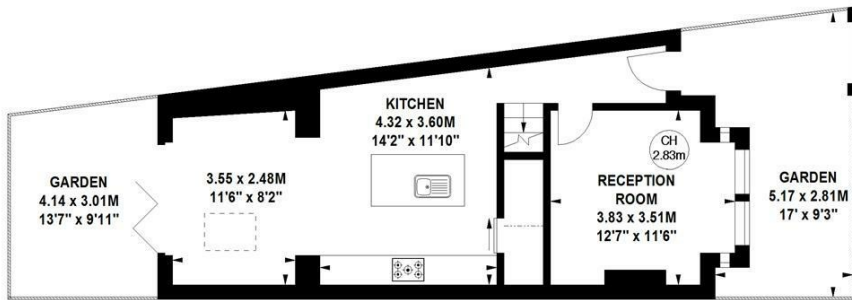
Key :
 CH - Ceiling Height



Second Floor



First Floor



Ground Floor

Not to scale, for guidance only and must not be relied upon as a statement of fact.
 All measurements and areas are approximate only

SITUATION



5-7 Turnham Green Terrace, Chiswick, London, W4 1RG

Tel 020 8747 8300

E-mail sales@whitmanandco.com

Website www.whitmanandco.com



MISREPRESENTATION ACT 1967

Whitman & Co. for themselves and for the vendors give notice that these particulars do not constitute any part of, an offer of contract. All statements contained in these particulars are made without responsibility on the part of Whitman & Co. or the vendor. None of the statements contained in these particulars is to be relied upon as statements or representations of facts. Any intending purchaser must satisfy himself by inspection or otherwise as to the correctness of each of the statements contained in these particulars. The vendor does not make or give, and neither Whitman & Co. or any person in their employment has any authority to make or give, any representation or warranty whatever in relation to the property.